

Datasheet for ABIN962167
anti-HCN1 antibody (AA 778-910)



[Go to Product page](#)

2 Images

Overview

Quantity:	50 µg
Target:	HCN1
Binding Specificity:	AA 778-910
Reactivity:	Human, Mouse, Rat
Host:	Mouse
Clonality:	Monoclonal
Conjugate:	This HCN1 antibody is un-conjugated
Application:	Western Blotting (WB), Immunohistochemistry (IHC), Immunoprecipitation (IP), Immunohistochemistry (Paraffin-embedded Sections) (IHC (p)), Immunocytochemistry (ICC)

Product Details

Brand:	IHC-plus™
Immunogen:	Fusion protein amino acids 778-910 (C terminus) of rat HCN1, accession number Q9JKB0. Type of Immunogen: Fusion protein
Clone:	S70-28
Isotype:	IgG1
Specificity:	Detects ~100 kD protein. No cross reactivity against HCN2.
Purification:	Protein G purified from tissue culture supernatant

Target Details

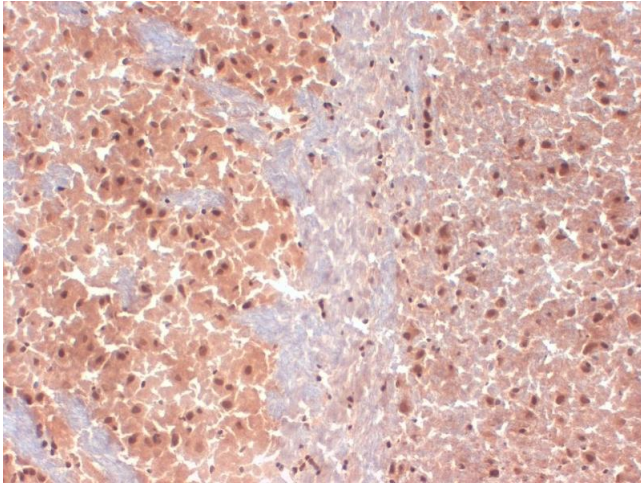
Target:	HCN1
Alternative Name:	HCN1 (HCN1 Products)
Background:	Name/Gene ID: HCN1 Subfamily: Potassium channel - cyclic nucleotide gated Family: Ion Channel Synonyms: HCN1, BCNG1, BCNG-1, HAC2, HAC-2
Gene ID:	348980
UniProt:	O60741
Pathways:	Asymmetric Protein Localization

Application Details

Application Notes:	Approved: ICC (0.1 - 1 µg/mL), IHC, IHC-P (1:50), IP (1 - 10 µg/mL), WB (1 - 10 µg/mL) Usage: Western Blot: Use the lysate in SDS buffer but without boiling, incubating for 20 mins at 37 °C instead.
Comment:	Target Species of Antibody: Rat
Restrictions:	For Research Use only

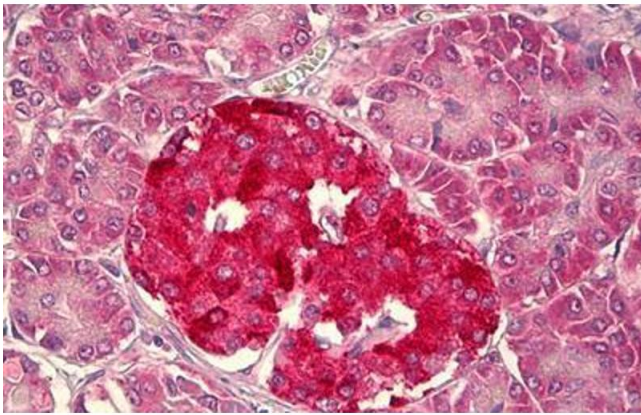
Handling

Format:	Liquid
Concentration:	Lot specific
Buffer:	PBS, pH 7.4, 50 % glycerol, 0.09 % sodium azide
Preservative:	Sodium azide
Precaution of Use:	This product contains Sodium azide: a POISONOUS AND HAZARDOUS SUBSTANCE which should be handled by trained staff only.
Handling Advice:	avoid freeze thaw cycles.
Storage:	4 °C, -20 °C
Storage Comment:	Short term 4°C, long term aliquot and store at -20°C, avoid freeze-thaw cycles.



Immunohistochemistry

Image 1. IHC analysis of HCN1 in frozen sections of mouse brain extract using HCN1 antibody. This image was taken for the unconjugated form of this product. Other forms have not been tested.



Immunohistochemistry

Image 2. Anti-HCN1 antibody IHC staining of human pancreas, islets of Langerhans. Immunohistochemistry of formalin-fixed, paraffin-embedded tissue after heat-induced antigen retrieval. Antibody ABIN962167 dilution 1:50.