

Datasheet for ABIN962190  
**anti-CD45RA antibody (FITC)**[Go to Product page](#)

## 2 Images

## Overview

Quantity:	25 tests
Target:	CD45RA
Reactivity:	Human
Host:	Mouse
Clonality:	Monoclonal
Conjugate:	This CD45RA antibody is conjugated to FITC
Application:	Flow Cytometry (FACS), Immunohistochemistry (IHC), Immunohistochemistry (Paraffin-embedded Sections) (IHC (p)), Immunoprecipitation (IP), Immunohistochemistry (Frozen Sections) (IHC (fro))

## Product Details

Brand:	IHC-plus™
Immunogen:	Human CD45RA
Isotype:	IgG1
Specificity:	Recognizes human CD45RA.
Purification:	Purified

## Target Details

Target:	CD45RA
Alternative Name:	CD45RA ( <a href="#">CD45RA Products</a> )

## Application Details

Application Notes: Approved: Flo, IHC, IHC-Fr, IHC-P (1:50), IP

Usage: Immunohistochemistry: This antibody was validated for use in immunohistochemistry on a panel of 21 formalin-fixed, paraffin-embedded (FFPE) human tissues after heat induced antigen retrieval in pH 6.0 citrate buffer. After incubation with the primary antibody, slides were incubated with biotinylated secondary antibody, followed by alkaline phosphatase-streptavidin and chromogen. The stained slides were evaluated by a pathologist to confirm staining specificity. The optimal working concentration for this antibody was determined to be 1:50. The applications listed have been tested for the unconjugated form of this product. Other forms have not been tested.

Comment: Target Species of Antibody: Human

Restrictions: For Research Use only

## Handling

Format: Liquid

Concentration: Lot specific

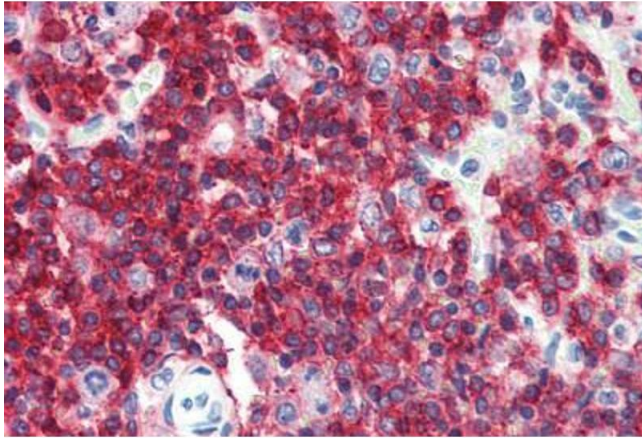
Buffer: PBS, 0.1 % sodium azide, stabilizing agent.

Preservative: Sodium azide

Precaution of Use: This product contains Sodium azide: a POISONOUS AND HAZARDOUS SUBSTANCE which should be handled by trained staff only.

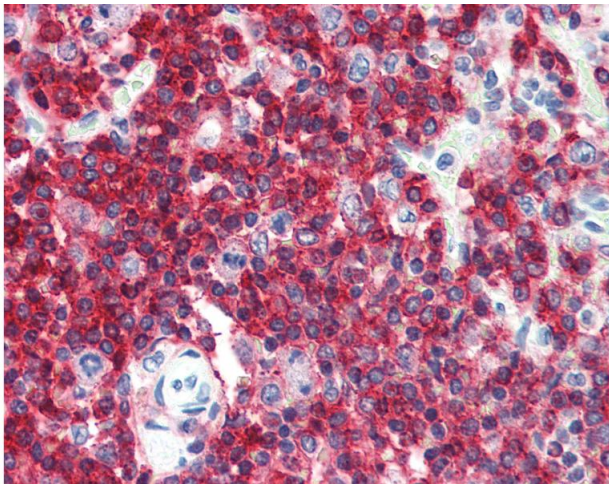
Storage: 4 °C, -20 °C

Storage Comment: Short term: 4°C  
Long term: Add glycerol (40-50%) -20°C.



#### Immunohistochemistry

**Image 1.** Anti-CD45RA antibody IHC staining of human spleen. Immunohistochemistry of formalin-fixed, paraffin-embedded tissue after heat-induced antigen retrieval. Antibody ABIN962190 dilution 1:50.



#### Immunohistochemistry

**Image 2.** Anti-CD45RA antibody IHC of human spleen. Immunohistochemistry of formalin-fixed, paraffin-embedded tissue after heat-induced antigen retrieval. Antibody dilution 1:50. This image was taken for the unconjugated form of this product. Other forms have ...