

Datasheet for ABIN962526
anti-PPP2R5A antibody (N-Term)

2 Images

[Go to Product page](#)

Overview

Quantity:	50 µg
Target:	PPP2R5A
Binding Specificity:	N-Term
Reactivity:	Human, Mouse, Rat
Host:	Sheep
Clonality:	Polyclonal
Conjugate:	This PPP2R5A antibody is un-conjugated
Application:	Western Blotting (WB), Immunohistochemistry (IHC), Immunohistochemistry (Paraffin-embedded Sections) (IHC (p))

Product Details

Brand:	IHC-plus™
Immunogen:	Type of Immunogen: Native protein
Specificity:	This peptide (NH ₂ -Phe-Ser-Gln-Val-Lys-Gly-Ala-Val-Asp- Asp-Asp-Val-Ala-Glu-COOH) corresponds to N -terminal peptide of PP2A/B alpha regulatory subunit having a MW of 55kD. The sequence used is amino acid 14-27.
Purification:	Ammonium sulfate precipitation

Target Details

Target:	PPP2R5A
Alternative Name:	Protein Phosphatase 2 A/B alpha (PPP2R5A Products)
Pathways:	PI3K-Akt Signaling

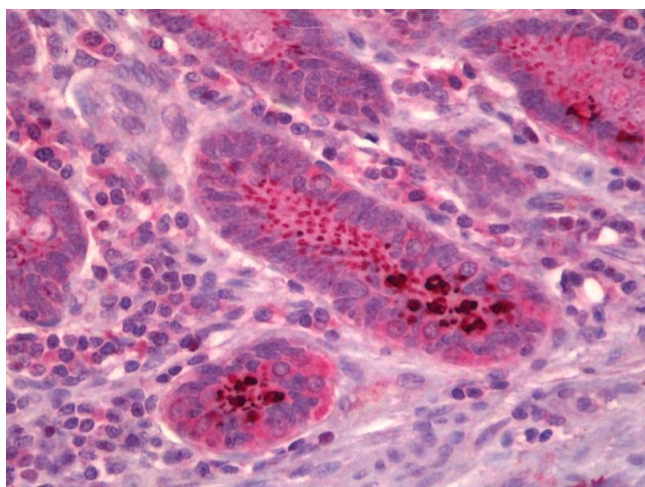
Application Details

Application Notes:	Approved: IHC, IHC-P (10 µg/mL), WB (5 - 10 µg/mL)
Restrictions:	For Research Use only

Handling

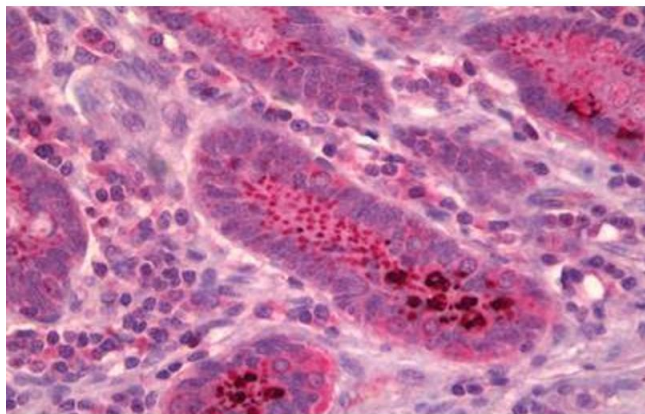
Format:	Liquid
Concentration:	Lot specific
Buffer:	Provided as solution in phosphate buffered saline with 0.08 % sodium azide
Preservative:	Sodium azide
Precaution of Use:	This product contains Sodium azide: a POISONOUS AND HAZARDOUS SUBSTANCE which should be handled by trained staff only.
Handling Advice:	avoid freeze thaw cycles.
Storage:	4 °C,-20 °C
Storage Comment:	Short term 4°C, long term aliquot and store at -20°C, avoid freeze-thaw cycles.

Images



Immunohistochemistry

Image 1. Anti-Protein Phosphatase 2 A/B Alpha antibody IHC of human small intestine. Immunohistochemistry of formalin-fixed, paraffin-embedded tissue after heat-induced antigen retrieval. Antibody concentration 10 ug/ml.



Immunohistochemistry

Image 2. Anti-Protein Phosphatase 2 A/B Alpha antibody IHC staining of human small intestine. Immunohistochemistry of formalin-fixed, paraffin-embedded tissue after heat-induced antigen retrieval. Antibody ABIN962526 concentration 10 ug/ml.