



Datasheet for ABIN964109

Albumin Protein (ALB) (Texas Red (TR))



[Go to Product page](#)

1 Image

Overview

Quantity:	1 mg
Target:	Albumin (ALB)
Origin:	Cow
Host:	Please inquire
Protein Type:	Native
Purification tag / Conjugate:	This Albumin protein is labelled with Texas Red (TR).

Product Details

Characteristics:	Concentration Definition: by UV absorbance at 280 nm
Purification:	Albumin

Target Details

Target:	Albumin (ALB)
Alternative Name:	Albumin (ALB Products)
Background:	Synonyms: BSA
Pathways:	Lipid Metabolism

Application Details

Application Notes:	This product is designed for immunofluorescence microscopy, fluorescence based plate assays (FLISA) and fluorescent western blotting. This product is also suitable for multiplex analysis, including multicolor imaging, utilizing various commercial platforms.<
--------------------	--

Application Details

Restrictions: For Research Use only

Handling

Format: Lyophilized

Reconstitution: Restore with deionized water (or equivalent)

Concentration: 1.0 mg/mL

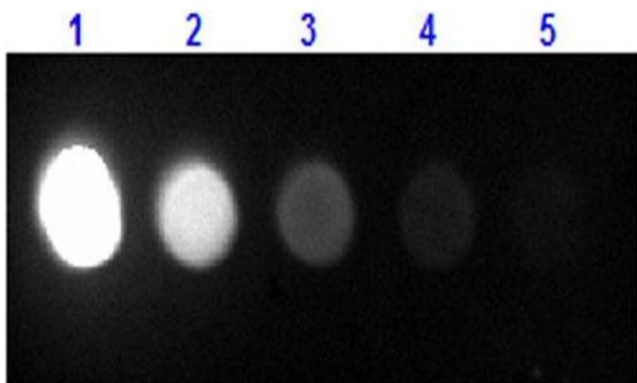
Buffer: 0.02 M Potassium Phosphate, 0.15 M Sodium Chloride, pH 7.2

Preservative: Sodium azide

Precaution of Use: This product contains sodium azide: a POISONOUS AND HAZARDOUS SUBSTANCE which should be handled by trained staff only.

Storage: 4 °C

Images



Dot Blot

Image 1. Dot Blot results of Bovine Albumin Texas Conjugate. Bovine Albumin Texas (1) 100ng, (2) 33.3ng, (3) 11.1ng, (4) 3.70ng, (5) 1.23ng. Blocking: ABIN925618 for 60 min at RT. Primary Antibody: none. Secondary Antibody: none. Imaged with BioRad ChemiDoc, Fluorescein filter.