

Datasheet for ABIN964111

Albumin Protein (ALB) (Rhodamine)**2** Images[Go to Product page](#)

Overview

Quantity:	1 mg
Target:	Albumin (ALB)
Origin:	Human
Source:	Human
Protein Type:	Native
Purification tag / Conjugate:	This Albumin protein is labelled with Rhodamine.
Application:	Dot Blot (DB)

Product Details

Purpose:	Human Albumin Rhodamine Conjugated
Cross-Reactivity (Details):	Assay by immunoelectrophoresis resulted in a single precipitin arc against anti-Human Albumin.
Characteristics:	Human Albumin rhodamine conjugation, Human Albumin TRITC conjugation
Purification:	Human Albumin Rhodamine was prepared from chromatographically pure Human Albumin.

Target Details

Target:	Albumin (ALB)
Alternative Name:	Albumin (ALB Products)
Background:	Background: Human albumin or serum albumin is encoded by the ALB gene and is the most abundant plasma protein in mammals. Human albumin is essential for maintaining the osmotic pressure needed for proper distribution of body fluids between intravascular compartments

Target Details

and body tissues. Human albumin also acts as a plasma carrier by non-specifically binding several hydrophobic steroid hormones and as a transport protein for hemin and fatty acids. Too much serum albumin in the body can be harmful.

Pathways: [Lipid Metabolism](#)

Application Details

Application Notes: Application Note: Human Albumin Rhodamine has been tested by dot blot and is designed for immunofluorescence microscopy, fluorescence based plate assays (FLISA), fluorescent western blotting, multiplex analysis, including multicolor imaging, utilizing various commercial platforms.

Other: User Optimized

Restrictions: For Research Use only

Handling

Format: Lyophilized

Reconstitution: Reconstitution Buffer: Restore with deionized water (or equivalent)
Reconstitution Volume: 1.0 mL

Concentration: 1.0 mg/mL

Buffer: Buffer: 0.02 M Potassium Phosphate, 0.15 M Sodium Chloride, pH 7.2
Stabilizer: 10 mg/mL Polyethylene Glycol (PEG-8000)
Preservative: 0.01 % (w/v) Sodium Azide

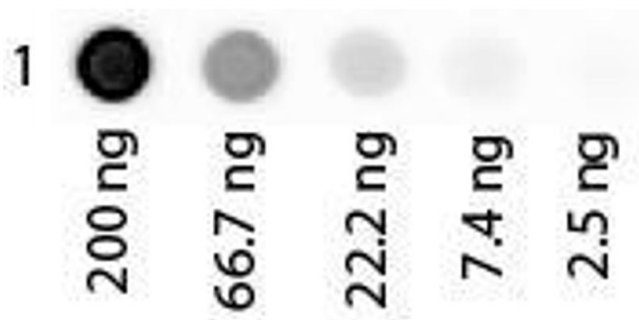
Preservative: Sodium azide

Precaution of Use: This product contains Sodium azide: a POISONOUS AND HAZARDOUS SUBSTANCE which should be handled by trained staff only.

Storage: 4 °C, -20 °C

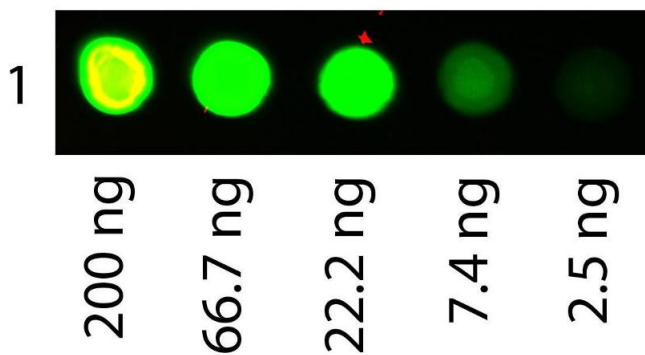
Storage Comment: Store vial at 4° C prior to restoration. For extended storage aliquot contents and freeze at -20° C or below. Avoid cycles of freezing and thawing. Centrifuge product if not completely clear after standing at room temperature. This product is stable for several weeks at 4° C as an undiluted liquid. Dilute only prior to immediate use.

Expiry Date: 12 months



Dot Blot

Image 1. Dot Blot of Human Albumin Rhodamine Conjugated. Antigen: Rhodamine Conjugated Human Albumin. Load: 3-fold serial dilution starting at 200 ng. Primary antibody: None. Secondary antibody: None. Block: ABIN925618 for 1 H at RT.



Dot Blot

Image 2. Dot Blot of Human Albumin Rhodamine Conjugated. Antigen: Rhodamine Conjugated Human Albumin. Load: 3-fold serial dilution starting at 200 ng. Primary antibody: None. Secondary antibody: None. Block: ABIN925618 for 1 H at RT.