

Datasheet for ABIN964117

Avidin Protein (AVD) (Rhodamine)[Go to Product page](#)**1** Image

Overview

Quantity:	2 mg
Target:	Avidin (AVD)
Origin:	Chicken egg
Host:	Please inquire
Purification tag / Conjugate:	This Avidin protein is labelled with Rhodamine.

Product Details

Specificity:	This product was prepared from chromatographically pure avidin followed by extensive dialysis against the buffer stated above. Assay by immunoelectrophoresis resulted in a single precipitin arc against anti-Avidin.
Purification:	Albumin

Target Details

Target:	Avidin (AVD)
Alternative Name:	Avidin (AVD Products)
Background:	Synonyms: TRITC

Application Details

Application Notes:	This product is designed for immunofluorescence microscopy, fluorescence based plate assays (FLISA) and fluorescent western blotting. This product is also suitable for multiplex analysis, including multicolor imaging, utilizing various commercial platforms.
--------------------	---

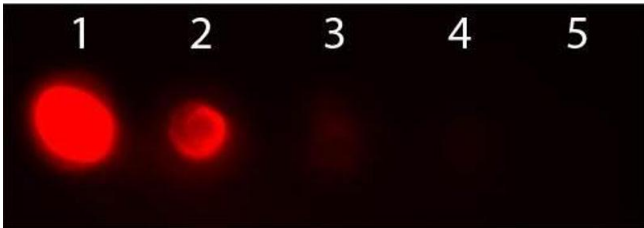
Application Details

Restrictions: For Research Use only

Handling

Format:	Lyophilized
Reconstitution:	Reconstitution Buffer: Restore with deionized water (or equivalent), Reconstitution Volume: 1.0 mL
Concentration:	2.0 mg/mL
Buffer:	0.02 M Potassium Phosphate, 0.15 M Sodium Chloride, pH 7.2, 10 mg/mL Bovine Serum Albumin (BSA) - Immunoglobulin and Protease free
Preservative:	Sodium azide
Precaution of Use:	This product contains sodium azide: a POISONOUS AND HAZARDOUS SUBSTANCE which should be handled by trained staff only.
Storage:	4 °C
Expiry Date:	12 months

Images



Dot Blot

Image 1. Dot Blot of Avidin Rhodamine Conjugated. Antigen: Avidin Rhodamine Conjugated dotted directly to nitrocellulose membrane. Load: Lane 1 - 100 ng Lane 2 - 33.3 ng Lane 3 - 11.1 ng Lane 4 - 3.70 ng Lane 5 - 1.23 ng. Primary antibody: n/a. Secondary antibody: n/a. Block: ABIN925618 for 1 HR at RT