

Datasheet for ABIN964119
Avidin Protein (AVD) (FITC)[Go to Product page](#)

1 Image

Overview

Quantity:	2 mg
Target:	Avidin (AVD)
Origin:	Chicken egg
Host:	Please inquire
Purification tag / Conjugate:	This Avidin protein is labelled with FITC.

Product Details

Specificity:	This product was prepared from chromatographical pure avidin. Assay by immunoelectrophoresis resulted in a single precipitin arc against anti-Fluorescein and anti-Avidin. No reaction was observed against anti-Streptavidin.
--------------	--

Target Details

Target:	Avidin (AVD)
Alternative Name:	Avidin (AVD Products)
Background:	Synonyms: FITC

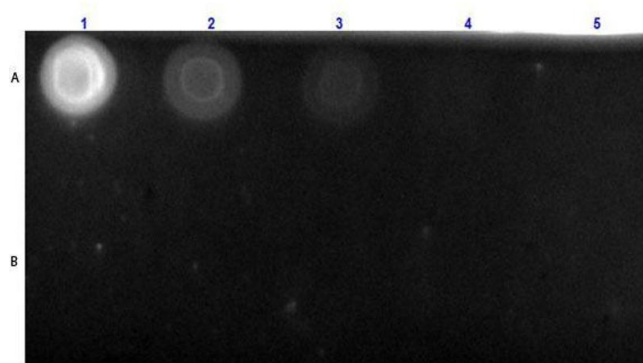
Application Details

Application Notes:	This product is designed for immunofluorescence microscopy, fluorescence based plate assays (FLISA) and fluorescent western blotting. This product is also suitable for multiplex analysis, including multicolor imaging, utilizing various commercial platforms.
Restrictions:	For Research Use only

Handling

Format:	Lyophilized
Reconstitution:	Reconstitution Buffer: Restore with deionized water (or equivalent), Reconstitution Volume: 1.0 mL
Concentration:	2.2 mg/mL
Buffer:	0.02 M Potassium Phosphate, 0.15 M Sodium Chloride, pH 7.2, 10 mg/mL Bovine Serum Albumin (BSA) - Immunoglobulin and Protease free
Preservative:	Sodium azide
Precaution of Use:	This product contains sodium azide: a POISONOUS AND HAZARDOUS SUBSTANCE which should be handled by trained staff only.
Storage:	4 °C
Expiry Date:	12 months

Images



Dot Blot

Image 1. Dot Blot of Avidin Fluorescein conjugated. Dot Blot of Avidin Fluorescein conjugated. Lane A: BSA Biotin Conjugated. Lane B: BSA. Lanes 1 load: 100ng, 2-5: serial dilution 3 fold. Primary Antibody: n/a. Secondary Antibody: Avidin Fluorescein Conjugated at 1 µg/mL at RT for 1 hour. Block: ABIN925618 for 30 min at RT.