

Datasheet for ABIN964127
Biotin Protein (beta-Gal)



[Go to Product page](#)

1 Image

Overview

Quantity:	1 mg
Target:	Biotin
Origin:	Chemical
Source:	Synthetic
Purification tag / Conjugate:	This Biotin protein is labelled with beta-Gal.
Application:	ELISA

Product Details

Specificity: Biotin Beta Galactosidase Conjugated has been assayed against 1.0 µg of Streptavidin in a standard capture ELISA using pNPP p-nitrophenyl phosphate code # NPP-10 as a substrate for 30 minutes at room temperature. A working dilution of 1:1, 000 to 1:3, 000 is suggested for Biotin Beta Galactosidase Conjugated. Biotin Beta Galactosidase Conjugated has been assayed against 1.0 µg of Streptavidin in a standard capture ELISA using pNPP p-nitrophenyl phosphate code # NPP-10 as a substrate for 30 minutes at room temperature. A working dilution of 1:1, 000 is suggested for Biotin Beta Galactosidase Conjugated.

Target Details

Target:	Biotin
Abstract:	Biotin Products
Target Type:	Chemical
Background:	Biotin is a small biomolecule important for many cellular processes. Most importantly for biotechnology applications, biotin is amenable to conjugation to proteins for use in

Target Details

biochemical assays. Biotin has a very strong affinity for avidin and streptavidin

Application Details

Application Notes: Biotin Beta Galactosidase Conjugated has been assayed against 1.0 ug of Streptavidin in a standard capture ELISA using pNPP p-nitrophenyl phosphate as a substrate for 30 minutes at room temperature. A working dilution of 1:1,000 to 1:3,000 is suggested for Biotin Beta Galactosidase Conjugated. Biotin Beta Galactosidase Conjugated has been assayed against 1.0 ug of Streptavidin in a standard capture ELISA using pNPP p-nitrophenyl phosphate as a substrate for 30 minutes at room temperature. A working dilution of 1:1,000 to 1:3,000 is suggested for Biotin Beta Galactosidase Conjugated.

Comment: Biotin Beta Galactosidase Conjugated has been assayed against 1.0 ug of Streptavidin in a standard capture ELISA using pNPP p-nitrophenyl phosphate code # NPP-10 as a substrate for 30 minutes at room temperature. A working dilution of 1:1, 000 to 1:3, 000 is suggested for Biotin Beta Galactosidase Conjugated. Biotin Beta Galactosidase Conjugated has been assayed against 1.0 ug of Streptavidin in a standard capture ELISA using pNPP p-nitrophenyl phosphate code # NPP-10 as a substrate for 30 minutes at room temperature. A working dilution of 1:1, 000 is suggested for Biotin Beta Galactosidase Conjugated.

Restrictions: For Research Use only

Handling

Format: Liquid

Buffer: 0.05 M Potassium Phosphate, 0.001 M Magnesium Chloride, 0.1 M Beta-Mercaptoethanol, pH 7.8

Storage: 4 °C

Expiry Date: 12 months

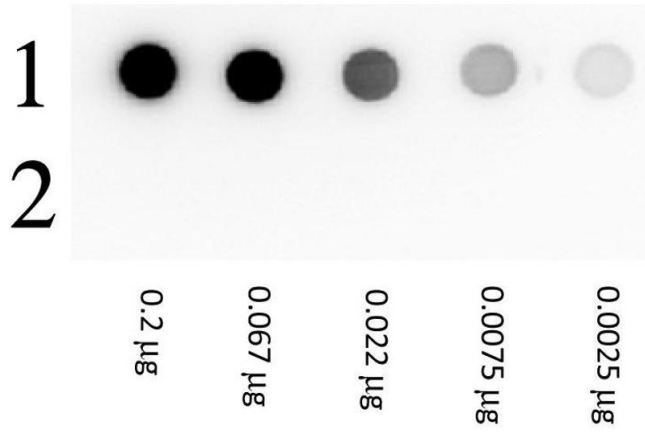


Image 1.