



[Go to Product page](#)

Datasheet for ABIN964142

gamma Globulin Fraction Protein

2 Images

Overview

Quantity:	100 mg
Target:	gamma Globulin Fraction
Origin:	Chicken
Source:	Chicken
Protein Type:	Native
Application:	Control (Ct), SDS-PAGE (SDS)

Product Details

Purpose:	Chicken Gamma Globulin Fraction consists of the fraction of blood serum which contains whole antibodies as well as other non-albumin plasma proteins.
Characteristics:	Gamma globulins are a class of globulins, identified by their position after serum protein electrophoresis. The most significant gamma globulins are immunoglobulins ("Igs"), more commonly known as antibodies, although some Igs are not gamma globulins, and some gamma globulins are not Igs. Globulin is one of the three main types of serum proteins, the others being albumin and fibrinogen. Some globulins are produced in the liver, while others are made by the immune system.
Purification:	Chicken gamma globulin was prepared from normal serum by a multi-step process which includes delipidation and salt fractionation followed by extensive dialysis against the buffer stated above. Assay by immunoelectrophoresis resulted in precipitin arcs against anti-Chicken Serum corresponding to gamma globulins.

Target Details

Target: gamma Globulin Fraction

Application Details

Restrictions: For Research Use only

Handling

Format: Lyophilized

Reconstitution: Restore with deionized water (or equivalent)

Concentration: 10.0 mg/mL

Buffer: 0.02 M Potassium Phosphate, 0.15 M Sodium Chloride, pH 7.2, 0.01% (w/v) Sodium Azide

Preservative: Sodium azide

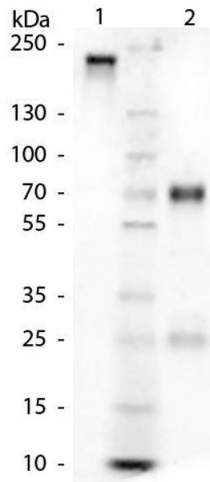
Precaution of Use: This product contains sodium azide: a POISONOUS AND HAZARDOUS SUBSTANCE which should be handled by trained staff only.

Handling Advice: Avoid cycles of freezing and thawing.

Storage: 4 °C/-20 °C

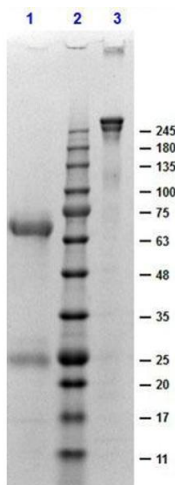
Storage Comment: Store vial at 4 °C prior to restoration. For extended storage aliquot contents and freeze at -20 °C or below. Avoid cycles of freezing and thawing. Centrifuge product if not completely clear after standing at room temperature. The product is stable for several weeks at 4 °C as an undiluted liquid. Dilute only prior to immediate use.

Expiry Date: 12 months



SDS-PAGE

Image 1. SDS-Page of Chicken Gamma Globulin Fraction. Lane 1: Chicken Gamma Globulin – Non-reduced. Lane 2: Chicken Gamma Globulin – Reduced. Load: 1.0 ug per lane. Stain Coomassie Blue. Predicted/Observed size: 230 kDa – Non-reduced, 25 & 70 kDa – Reduced for Chicken Gamma Globulin. Other band(s): None.



SDS-PAGE

Image 2. SDS-Page of Chicken Gamma Globulin Fraction. Lane 1: Reduced Chicken Gamma Globulin. Lane 2: Opal PreStained Molecular Weight Ladder. Lane 3: Non-reduced Chicken Gamma Globulin. Load: 1.0 ug per lane. 4-20% Gel, Stain Coomassie Blue. Predicted/Observed size: 25 & 70 kDa – Reduced; 230 kDa, migrates higher – Non-reduced, for Chicken Gamma Globulin.