

Datasheet for ABIN964150
gamma Globulin Fraction Protein



[Go to Product page](#)

1 Image

Overview

Quantity:	50 mg
Target:	gamma Globulin Fraction
Origin:	Rabbit
Source:	Rabbit
Protein Type:	Native
Application:	SDS-PAGE (SDS), ELISA, Western Blotting (WB), Immunohistochemistry (IHC), Fluorescence Microscopy (FM)

Product Details

Purpose:	Rabbit Gamma Globulin Fraction
Cross-Reactivity (Details):	Assay by immunoelectrophoresis resulted in precipitin arcs against anti-Rabbit Serum corresponding to gamma globulins.
Characteristics:	Plasma Gamma Globulin, Serum Gamma Globulin, Globulin Fractions, Gammaglobulin, rabbit gamma fraction
Purification:	Rabbit Gamma Globulin product was prepared from normal Rabbit serum by a multi-step process which includes delipidation and salt fractionation followed by extensive dialysis against the buffer stated above.

Target Details

Target:	gamma Globulin Fraction
Background:	Background: Rabbit Gamma Globulin Fraction consists of the fraction of blood serum which

Target Details

contains whole antibodies as well as other non-albumin plasma proteins. Gamma globulins can be utilized therapeutically to temporarily boost a patient's immunity (such as after an immunosuppressive infection) or to increase the likelihood of kidney transplant acceptance. Gamma Globulin Fraction can be utilized in molecular biology experiments as a control reagent.

Application Details

Application Notes: Immunohistochemistry Dilution: User Optimized
Application Note: Rabbit Gamma Globulin Fraction has been tested by SDS-PAGE and can be utilized in Western Blotting, Immunohistochemistry and ELISA experiments.
Western Blot Dilution: User Optimized
ELISA Dilution: User Optimized
IF Microscopy Dilution: User Optimized

Restrictions: For Research Use only

Handling

Format: Lyophilized

Reconstitution: Reconstitution Buffer: Restore with deionized water (or equivalent)
Reconstitution Volume: 5.0 mL

Concentration: 11 mg/mL

Buffer: Buffer: 0.02 M Potassium Phosphate, 0.15 M Sodium Chloride, pH 7.2
Stabilizer: None
Preservative: 0.01 % (w/v) Sodium Azide

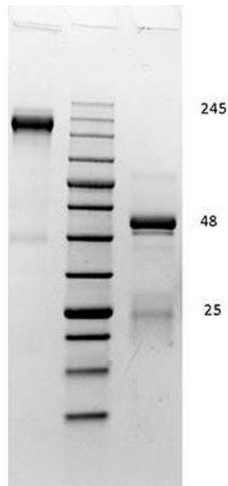
Preservative: Sodium azide

Precaution of Use: This product contains Sodium azide: a POISONOUS AND HAZARDOUS SUBSTANCE which should be handled by trained staff only.

Storage: 4 °C, -20 °C

Storage Comment: Store Rabbit Gamma at 4° C prior to restoration. For extended storage aliquot contents and freeze at -20° C or below. Avoid cycles of freezing and thawing. Centrifuge product if not completely clear after standing at room temperature. This product is stable for several weeks at 4° C as an undiluted liquid. Dilute only prior to immediate use.

Expiry Date: 12 months



SDS-PAGE

Image 1. SDS PAGE of Rabbit Gamma Globulin. Lane 1: Non-Reduced Rabbit Gamma Globulin. Lane 2: 5µL Opal Prestained Marker MB-210-0500. Lane 3: Reduced Rabbit Gamma Globulin. Load: 1µg per lane. Predicted/Observed size: Non-Reduced at 160kDa; Reduced at 55, 25 kDa.