

Datasheet for ABIN964152

gamma Globulin Fraction Protein



[Go to Product page](#)

1 Image

Overview

Quantity:	50 mg
Target:	gamma Globulin Fraction
Origin:	Rat
Source:	Rat
Protein Type:	Native
Application:	SDS-PAGE (SDS), ELISA, Western Blotting (WB)

Product Details

Purpose:	Rat Gamma Globulin Fraction
Cross-Reactivity (Details):	Assay by immunoelectrophoresis resulted in precipitin arcs against anti-Rat Serum corresponding to gamma globulins.
Characteristics:	Plasma Gamma Globulin, Serum Gamma Globulin, Globulin Fractions, Gammaglobulin, rat gamma fraction
Purification:	This product was prepared from normal Rat serum by a multi-step process which includes delipidation and salt fractionation followed by extensive dialysis against the buffer stated above.

Target Details

Target:	gamma Globulin Fraction
Background:	Background: Rat Gamma Globulin Fraction consists of the fraction of blood serum which contains whole antibodies as well as other non-albumin plasma proteins. Gamma globulins can

Target Details

be utilized therapeutically to temporarily boost an patient's immunity (such as after an immunosuppressive infection) or to increase the likelihood of kidney transplant acceptance. Gamma Globulin Fraction can be utilized in molecular biology experiments as a control reagent.

Application Details

Application Notes: Application Note: Rat Gamma Globulin Fraction has been tested by SDS-PAGE and can be utilized in Western Blotting and ELISA experiments.

Western Blot Dilution: User Optimized

ELISA Dilution: User Optimized

Restrictions: For Research Use only

Handling

Format: Lyophilized

Reconstitution: Reconstitution Buffer: Restore with deionized water (or equivalent)

Reconstitution Volume: 5.0 mL

Concentration: 10.0 mg/mL

Buffer: Buffer: 0.02 M Potassium Phosphate, 0.15 M Sodium Chloride, pH 7.2

Stabilizer: None

Preservative: 0.01 % (w/v) Sodium Azide

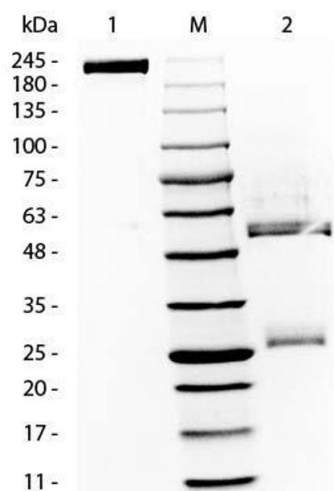
Preservative: Sodium azide

Precaution of Use: This product contains Sodium azide: a POISONOUS AND HAZARDOUS SUBSTANCE which should be handled by trained staff only.

Storage: 4 °C, -20 °C

Storage Comment: Store vial at 4° C prior to restoration. For extended storage aliquot contents and freeze at -20° C or below. Avoid cycles of freezing and thawing. Centrifuge product if not completely clear after standing at room temperature. This product is stable for several weeks at 4° C as an undiluted liquid. Dilute only prior to immediate use.

Expiry Date: 12 months



SDS-PAGE

Image 1. SDS-PAGE of Rat Gamma Globulin. Lane 1: Non-reduced Rat Gamma Globulin. Lane 2: 5µL OPAL Pre-stained Marker MB-210-0500. Lane 3: Reduced Rat Gamma Globulin. Load: 1µg per lane. Predicted/Observed size: Non-reduced at 180-200 kDa , Reduced at 55, 25 kDa.