

Datasheet for ABIN964153

gamma Globulin Fraction Protein[Go to Product page](#)**1** Image

Overview

Quantity:	100 mg
Target:	gamma Globulin Fraction
Origin:	Sheep
Source:	Sheep
Protein Type:	Native
Application:	SDS-PAGE (SDS), ELISA, Western Blotting (WB), Immunohistochemistry (IHC)

Product Details

Purpose:	Sheep Gamma Globulin Fraction
Cross-Reactivity (Details):	Assay by immunoelectrophoresis resulted in precipitin arcs against anti-Sheep Serum corresponding to gamma globulins.
Characteristics:	Plasma Gamma Globulin, Serum Gamma Globulin, Globulin Fractions, Gammaglobulin, sheep gamma fraction
Purification:	Gamma Globulin was prepared from normal sheep serum by a multi-step process which includes delipidation and salt fractionation followed by extensive dialysis against the buffer stated above.

Target Details

Target:	gamma Globulin Fraction
Background:	Background: Sheep gamma globulin blocking reagent is an ideal blocker for western blotting, ELISA, Immunohistochemistry and other detection assays. Gamma globulins are a class of

Target Details

globulins, identified by their position after serum protein electrophoresis. The most significant gamma globulins are immunoglobulins ("Igs"), more commonly known as antibodies, although some Igs are not gamma globulins, and some gamma globulins are not Igs. Globulin is one of the three main types of serum proteins, the others being albumin and fibrinogen. Some globulins are produced in the liver, while others are made by the immune system.

Application Details

Application Notes: Immunohistochemistry Dilution: User Optimized
Application Note: Sheep Gamma Globulin Fraction has been tested by SDS-PAGE and can be utilized in Western Blotting and ELISA experiments.
Western Blot Dilution: User Optimized
ELISA Dilution: User Optimized

Restrictions: For Research Use only

Handling

Format: Lyophilized

Reconstitution: Reconstitution Buffer: Restore with deionized water (or equivalent)
Reconstitution Volume: 10.0 mL

Concentration: 50 mg/mL

Buffer: Buffer: 0.01 M Sodium Phosphate, 0.15 M Sodium Chloride, pH 7.2
Stabilizer: None
Preservative: 0.01 % (w/v) Sodium Azide

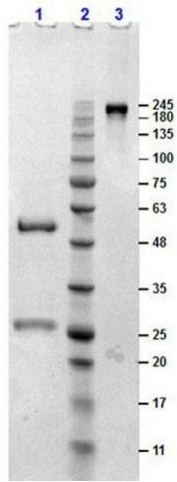
Preservative: Sodium azide

Precaution of Use: This product contains Sodium azide: a POISONOUS AND HAZARDOUS SUBSTANCE which should be handled by trained staff only.

Storage: 4 °C, -20 °C

Storage Comment: Store Sheep Gamma at 4° C prior to restoration. For extended storage aliquot contents and freeze at -20° C or below. Avoid cycles of freezing and thawing. Centrifuge product if not completely clear after standing at room temperature. This product is stable for several weeks at 4° C as an undiluted liquid. Dilute only prior to immediate use.

Expiry Date: 12 months



SDS-PAGE

Image 1. SDS-PAGE results of Sheep Gamma Globulin. Lane 1: reduced Sheep Gamma Globulin. Lane 2: Opal PreStained Molecular Weight Ladder . Lane 3: non-reduced Sheep Gamma Globulin. Load: 1.0 μ g. 4-20% SDS Gel, Coomassie Blue Stained.