

Datasheet for ABIN964155

**gamma Globulin Fraction Protein****1** Image[Go to Product page](#)

## Overview

Quantity:	100 mg
Target:	gamma Globulin Fraction
Origin:	Pig
Source:	Pig
Protein Type:	Native
Application:	SDS-PAGE (SDS)

## Product Details

Purpose:	Swine Gamma Globulin Fraction
Cross-Reactivity (Details):	Assay by immunoelectrophoresis resulted in precipitin arcs against anti-Swine Serum corresponding to gamma globulins.
Characteristics:	Plasma Gamma Globulin, Serum Gamma Globulin, Globulin Fractions, Gammaglobulin, swine gamma fraction
Purification:	This product was prepared from normal swine serum by a multi-step process which includes delipidation and salt fractionation followed by extensive dialysis against the buffer stated above.

## Target Details

Target:	gamma Globulin Fraction
Background:	Background: Swine Gamma Globulin Fraction consists of the fraction of blood serum which contains whole antibodies as well as other non-albumin plasma proteins. Gamma globulins can

## Target Details

---

be utilized therapeutically to temporarily boost an patient's immunity (such as after an immunosuppressive infection) or to increase the likelihood of kidney transplant acceptance. Gamma Globulin Fraction can be utilized in molecular biology experiments as a control reagent.

## Application Details

---

Application Notes: Optional[Flow Cytometry Dilution]: Swine Gamma Globulin Fraction has been tested by SDS-PAGE and can be utilized in Western Blotting and ELISA experiments.

Restrictions: For Research Use only

## Handling

---

Format: Lyophilized

Reconstitution: Reconstitution Buffer: Restore with deionized water (or equivalent)  
Reconstitution Volume: 10.0 mL

Concentration: 12.5 mg/mL

Buffer: Buffer: 0.02 M Potassium Phosphate, 0.15 M Sodium Chloride, pH 7.2  
Stabilizer: None  
Preservative: 0.01 % (w/v) Sodium Azide

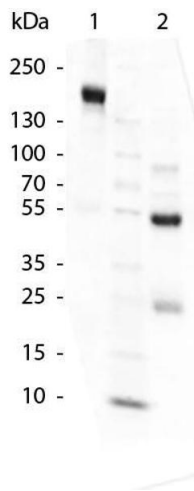
Preservative: Sodium azide

Precaution of Use: This product contains Sodium azide: a POISONOUS AND HAZARDOUS SUBSTANCE which should be handled by trained staff only.

Storage: 4 °C,-20 °C

Storage Comment: Store vial at 4° C prior to restoration. For extended storage aliquot contents and freeze at -20° C or below. Avoid cycles of freezing and thawing. Centrifuge product if not completely clear after standing at room temperature. This product is stable for several weeks at 4° C as an undiluted liquid. Dilute only prior to immediate use.

Expiry Date: 12 months



### SDS-PAGE

**Image 1.** SDS-Page of Swine Gamma Globulin Fraction.  
Lane 1: Swine Gamma Globulin Fraction (Non-reduced).  
Lane 2: Swine Gamma Globulin Fraction (Reduced). Load: 1.0  $\mu\text{g}$  per lane. Predicted/Observed size: 50 kDa, 25 kDa for Swine Gamma Globulin Fraction (Reduced). Other band(s): none.