

Datasheet for ABIN964156

GFP Protein[Go to Product page](#)**1** Image

Overview

Quantity:	100 µg
Target:	GFP
Origin:	Aequorea victoria
Host:	Please inquire
Protein Type:	Recombinant
Application:	Control (Ct), Immunoassay (IA)

Product Details

Characteristics:	Concentration Definition: by UV absorbance at 280 nm
------------------	--

Target Details

Target:	GFP
Abstract:	GFP Products
Target Type:	Viral Protein

Background: Green Fluorescent Protein (GFP) is used as a positive control when detecting GFP fusion proteins in anti-GFP antibody assays. Polyclonal anti-GFP can detect GFP by ELISA (sandwich or capture) or western blot. Biotin conjugated polyclonal anti-GFP used in a sandwich ELISA is well suited to titrate GFP in solution when used in combination with monoclonal anti-GFP (p/n 600-301-215), using either form of the antibody as the capture or detection antibody. Control GFP can be used as a control in western blots. Researchers should determine optimal titers for applications.

Synonyms: rGFP, GFP fusion protein

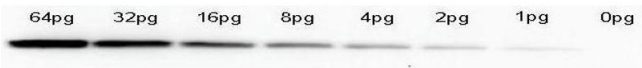
Application Details

Application Notes:	GFP is suitable as a control for polyclonal or monoclonal anti-GFP in immunological assays. The molecular weight of GFP is 28 kDa.
Restrictions:	For Research Use only

Handling

Format:	Liquid
Concentration:	1.0 mg/mL
Buffer:	0.02 M Potassium Phosphate, 0.15 M Sodium Chloride, pH 7.2
Preservative:	Sodium azide
Precaution of Use:	This product contains sodium azide: a POISONOUS AND HAZARDOUS SUBSTANCE which should be handled by trained staff only.
Storage:	-20 °C

Images



Western Blotting

Image 1. Western Blot of anti-GFP monoclonal antibody. Lane 1: 64pg of recombinant GFP protein were spiked into a HeLa cell-derived lysates . Lane 2: 32pg of recombinant GFP protein were spiked into a HeLa cell-derived lysates. Lane 3: 16pg of recombinant GFP protein were spiked into a HeLa cell-derived lysates. Lane 4: 8pg of recombinant GFP protein were spiked into a HeLa cell-derived lysates. Lane 5: 4pg of recombinant GFP protein were spiked into a HeLa cell-derived lysates. Lane 6: 2pg of recombinant GFP protein were spiked into a HeLa cell-derived lysates. Lane 7: 1g of recombinant GFP protein were spiked into a HeLa cell-derived lysates. Lane 8: 0pg of recombinant GFP protein were spiked into a HeLa cell-derived lysates. Primary antibody: anti-GFP monoclonal antibody at 1:400 for overnight at 4°C. Secondary antibody: HRP-conjugated anti-Mouse IgG was performed at a dilution of 1:20,000 for 1h at 4°C. Block: TTBS supplemented with 1% BSA for 1 h at 4°C.

Predicted/Observed size: 27 kDa for GFP. Other band(s): none.