

Datasheet for ABIN964172  
**Cow IgG Isotype Control**



[Go to Product page](#)

2 Images

### Overview

Quantity:	1 mg
Target:	IgG
Host:	Cow
Antibody Type:	Native
Application:	Isotype Control (IsoC)

### Product Details

Isotype:	IgG
Fragment:	Fc fragment
Characteristics:	Concentration Definition: by UV absorbance at 280 nm

### Target Details

Target:	IgG
Abstract:	<a href="#">IgG Products</a>
Target Type:	Antibody

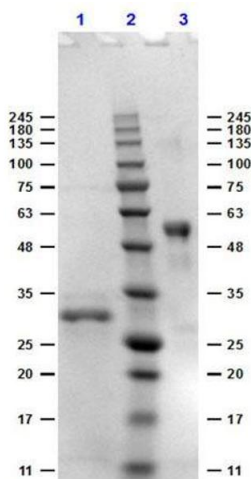
### Application Details

Application Notes:	Each Investigator should determine their own optimal working dilution for specific applications.
Restrictions:	For Research Use only

## Handling

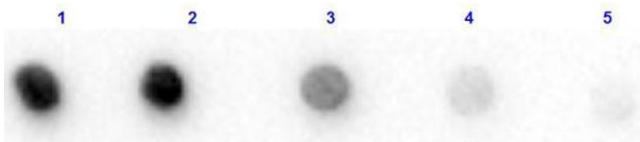
Format:	Liquid
Concentration:	2.0 mg/mL
Buffer:	0.02 M Potassium Phosphate, 0.15 M Sodium Chloride, pH 7.2
Preservative:	Sodium azide
Precaution of Use:	WARNING: Reagents contain sodium azide. Sodium azide is very toxic if ingested or inhaled. Avoid contact with skin, eyes, or clothing. Wear eye or face protection when handling. If skin or eye contact occurs, wash with copious amounts of water. If ingested or inhaled, contact a physician immediately. Sodium azide yields toxic hydrazoic acid under acidic conditions. Dilute azide-containing compounds in running water before discarding to avoid accumulation of potentially explosive deposits in lead or copper plumbing.
Storage:	4 °C

## Images



### SDS-PAGE

**Image 1.** SDS-PAGE for Bovine IgG F(c) Fragment. SDS-PAGE for Bovine IgG F(c) Fragment. Lane 1: 1µg Reduced Bovine Fc. Lane 2: MW ladder Opal pre-stained . Lane 3: 1µg Non-Reduced Bovine Fc. Coomassie Blue Stained.



### Dot Blot

**Image 2.** Dot Blot of Bovine IgG F(c) Fragment. Dot Blot of Bovine IgG F(c) Fragment. Lane 1: 100 ng Bovine Fc. Lanes 2-5: serial dilution 3 fold of Antigen. Primary Antibody: Rabbit Anti-Bovine Fc at 1 µg/ml at RT for 1 hour. Secondary Antibody: Rabbit Secondary HRP Antibody at 1:70,000 for 30 min at RT. Block: ABIN925618 at RT for 30 minutes.