

Datasheet for ABIN964331
Mouse IgG Isotype Control



[Go to Product page](#)

1 Image

Overview

Quantity:	500 µg
Target:	IgG
Host:	Mouse
Antibody Type:	Native
Application:	Isotype Control (IsoC)

Product Details

Isotype:	IgG
Characteristics:	Concentration Definition: by UV absorbance at 280 nm
Endotoxin Level:	Low Endotoxin

Target Details

Target:	IgG
Abstract:	IgG Products
Target Type:	Antibody

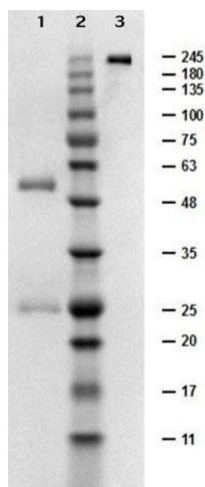
Application Details

Application Notes:	Each Investigator should determine their own optimal working dilution for specific applications.
Restrictions:	For Research Use only

Handling

Format:	Liquid
Concentration:	1.0 mg/mL
Buffer:	0.02 M Potassium Phosphate, 0.15 M Sodium Chloride, pH 7.2
Handling Advice:	Avoid repeated freezing and thawing.
Storage:	-20 °C

Images



SDS-PAGE

Image 1. SDS-PAGE results of Mouse IgG Control Low Endotoxin. Lane 1: reduced Mouse IgG Control Low Endotoxin. Lane 2: opal prestained molecular weight ladder . Lane 3: non-reduced Mouse IgG Control Low Endotoxin. Load: 1ug. 4-20% Lonza SDS-PAGE; Coomassie Stained; BioRad ChemiDoc Imaged.