



[Go to Product page](#)

Datasheet for ABIN964351

Rabbit IgG isotype control (Rhodamine)

1 Image

Overview

Quantity:	1 mg
Target:	IgG
Host:	Rabbit
Antibody Type:	Native
Conjugate:	Rhodamine
Application:	Isotype Control (IsoC), ELISA, Western Blotting (WB), Immunomicroscopy (IM)

Product Details

Isotype:	IgG
Characteristics:	Concentration Definition: by UV absorbance at 280 nm

Target Details

Target:	IgG
Abstract:	IgG Products
Target Type:	Antibody

Application Details

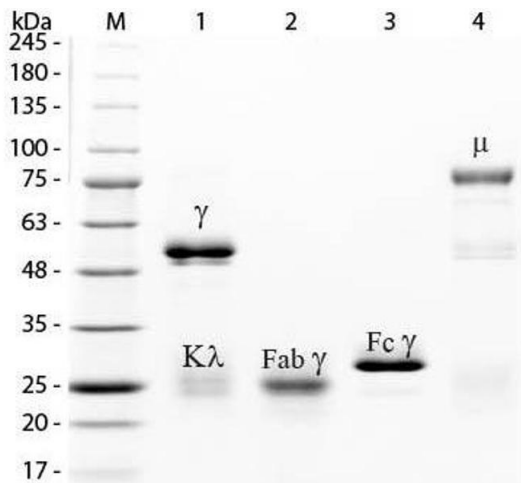
Application Notes: This product is designed for immunofluorescence microscopy, fluorescence based plate assays (FLISA) and fluorescent western blotting. This product is also suitable for multiplex analysis, including multicolor imaging, utilizing various commercial platforms.

Restrictions: For Research Use only

Handling

Format:	Lyophilized
Reconstitution:	Restore with deionized water (or equivalent)
Concentration:	1.0 mg/mL
Buffer:	0.02 M Potassium Phosphate, 0.15 M Sodium Chloride, pH 7.2
Preservative:	Sodium azide
Precaution of Use:	WARNING: Reagents contain sodium azide. Sodium azide is very toxic if ingested or inhaled. Avoid contact with skin, eyes, or clothing. Wear eye or face protection when handling. If skin or eye contact occurs, wash with copious amounts of water. If ingested or inhaled, contact a physician immediately. Sodium azide yields toxic hydrazoic acid under acidic conditions. Dilute azide-containing compounds in running water before discarding to avoid accumulation of potentially explosive deposits in lead or copper plumbing.
Handling Advice:	Product is photosensitive and should be protected from light.
Storage:	4 °C

Validation report #100071 for Immunofluorescence (IF)



SDS-PAGE

Image 1. SDS-PAGE of Rabbit IgG Whole Molecule Rhodamine Conjugated . Lane M: 3 μ L Opal Prestained Marker . Lane 1: Reduced Rabbit IgG Whole Molecule Rhodamine Conjugated . Lane 2: Reduced Rabbit IgG F(ab) Fragment . Lane 3: Reduced Rabbit IgG F(c) Fragment . Lane 4: Reduced Rabbit IgM Whole Molecule . Load: 1 μ g for F(ab) and F(c); 1.2 μ g for IgG and IgM. Predicted/Observed size: IgG at 50 and 25 kDa; F(c) at 25 kDa; F(ab) at 25 kDa; IgM at 70 and 23 kDa. Observed F(c) Fragment migrates slightly higher.