

Datasheet for ABIN964460  
**Mouse IgG1 Isotype Control**[Go to Product page](#)[1 Image](#)[1 Publication](#)

## Overview

Quantity:	1 mg
Target:	IgG1
Host:	Mouse
Clonality:	Monoclonal
Application:	Isotype Control (IsoC), ELISA, Western Blotting (WB)

## Product Details

Clone:	MG1L
Isotype:	IgG1
Characteristics:	Concentration Definition: by UV absorbance at 280 nm

## Target Details

Target:	IgG1
Abstract:	<a href="#">IgG1 Products</a>
Target Type:	Antibody
Background:	Secreted as part of the adaptive immune response by plasma B cells, mouse immunoglobulin G constitutes 75 % of serum immunoglobulins. Immunoglobulin G binds to viruses, bacteria, as well as fungi and facilitates their destruction or neutralization via agglutination (and thereby immobilizing them), activation of the complement cascade, and opsinization for phagocytosis. IgG1 is the most abundant of the four IgG subclasses. This isotype control possesses lambda light chains.

## Target Details

---

Synonyms: Mouse immunoglobulin gamma lambda, Mouse IgG1 isotype control

## Application Details

---

Application Notes: Mouse IgG1 lambda isotype control can be utilized as a control or standard reagent in Western Blotting and ELISA experiments where determination of sample isotype is important.

Restrictions: For Research Use only

## Handling

---

Format: Liquid

Concentration: 1.0 mg/mL

Buffer: 0.02 M Potassium Phosphate, 0.15 M Sodium Chloride, pH 7.2

Preservative: Sodium azide

Precaution of Use: WARNING: Reagents contain sodium azide. Sodium azide is very toxic if ingested or inhaled. Avoid contact with skin, eyes, or clothing. Wear eye or face protection when handling. If skin or eye contact occurs, wash with copious amounts of water. If ingested or inhaled, contact a physician immediately. Sodium azide yields toxic hydrazoic acid under acidic conditions. Dilute azide-containing compounds in running water before discarding to avoid accumulation of potentially explosive deposits in lead or copper plumbing.

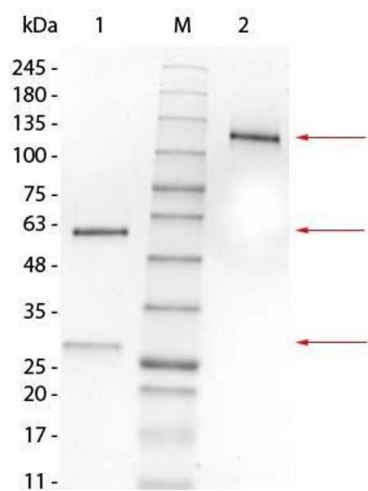
Handling Advice: Monoclonal antibodies should not be stored at a temperature below -25 °C due to the aggregation effect of the protein.

Storage: 4 °C

## Publications

---

Product cited in: Klaile, Müller, Schäfer, Clauder, Feer, Heyl, Stock, Klassert, Zipfel, Singer, Slevogt: "Binding of Candida albicans to Human CEACAM1 and CEACAM6 Modulates the Inflammatory Response of Intestinal Epithelial Cells." in: **mBio**, Vol. 8, Issue 2, (2017) ([PubMed](#)).



SDS-PAGE

**Image 1.** SDS-PAGE of Mouse IgG1 Lambda Isotype Control. Lane 1: Mouse IgG1 Lambda Isotype Control, Reduced. M: Opal Pre-stained Ladder . Lane 2: Mouse IgG1 Lambda Isotype Control, Non-reduced. Load: 1.0 µg per lane. Predicted/Observed: 120 kDa Non-reduced, 55 and 25 Reduced.