

Datasheet for ABIN964533

RFP Protein**2** Images[Go to Product page](#)

Overview

Quantity:	100 µg
Target:	RFP
Origin:	Discosoma
Host:	Please inquire
Protein Type:	Native
Application:	Control (Ct), Immunoassay (IA)

Product Details

Characteristics:	Concentration Definition: by UV absorbance at 280 nm
------------------	--

Target Details

Target:	RFP
Alternative Name:	DsRed Fluorescent Protein (RFP Products)
Background:	<p>Recombinant RFP (wild type, sequence corresponding to RFP, Discosoma spp.) is intended for use as a control when using polyclonal or monoclonal anti-RFP in immunological assays, in fluorometry, and in fluorescence activated cell sorting (FACS). Polyclonal anti-RFP can detect RFP by ELISA and western blot. Biotin conjugated polyclonal anti-RFP used in a sandwich ELISA is well suited to titrate RFP in solution when used in combination with unconjugated anti-RFP antibody. This product can be used as a control in western blots.</p> <p>Synonyms: DsRed, rDsRed, Discosoma sp. Red Fluorescent Protein, Red fluorescent protein drFP583</p>
Gene ID:	55976617

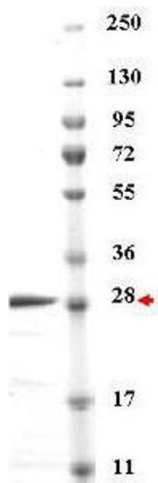
Application Details

Application Notes:	RFP is suitable as a control for polyclonal or monoclonal anti-RFP in immunological assays. The molecular weight of RFP (calculated) is 27 kDa, but in a gel it is expected to run at approximately 28-30 kDa.
Restrictions:	For Research Use only

Handling

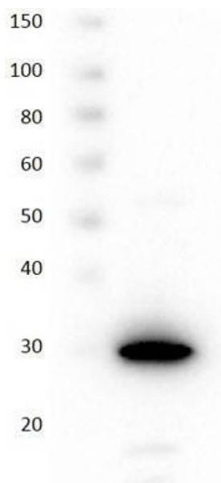
Format:	Liquid
Concentration:	1.0 mg/mL
Buffer:	0.02 M Potassium Phosphate, 0.15 M Sodium Chloride, pH 7.2
Storage:	-20 °C

Images



Western Blotting

Image 1. SDS-PAGE of purified RFP control shows a single band approximately 28-30 kDa (arrow). Approximately 1 µg of purified protein was loaded on to a 4-20% gradient gel for separation followed by staining with Coomassie blue. Molecular weight estimation was made by comparison to MW markers indicated at the right.



Western Blotting

Image 2. Western blot using RFP control protein. Lane 1: Super Signal Molecular Weight. Lane 2: 50ng of RFP . Primary Antibody: Rabbit Anti-RFP at 1:1000 overnight at 2-8°C. Secondary Antibody: Goat Anti-Rabbit IgG HRP 1:40,000 for 30mins at RT. Expect ~27kDa.