



[Go to Product page](#)

Datasheet for ABIN964536
Streptavidin Protein (FITC)

1 Image

Overview

Quantity:	1 mg
Target:	Streptavidin
Origin:	Streptomyces avidinii
Host:	Please inquire
Purification tag / Conjugate:	This Streptavidin protein is labelled with FITC.

Product Details

Specificity: This product was prepared from chromatographically pure Streptavidin. Assay by immunoelectrophoresis resulted in a single precipitin arc against anti-Fluorescein and anti-Streptavidin.

Target Details

Target:	Streptavidin
Abstract:	Streptavidin Products
Background:	Synonyms: FITC

Application Details

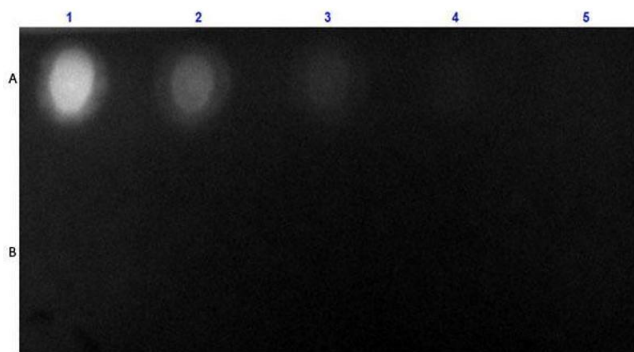
Application Notes: This product is designed for immunofluorescence microscopy, fluorescence based plate assays (FLISA) and fluorescent western blotting. This product is also suitable for multiplex analysis, including multicolor imaging, utilizing various commercial platforms.

Restrictions: For Research Use only

Handling

Format:	Lyophilized
Reconstitution:	Reconstitution Buffer: Restore with deionized water (or equivalent), Reconstitution Volume: 1.0 mL
Concentration:	1.0 mg/mL
Buffer:	0.02 M Potassium Phosphate, 0.15 M Sodium Chloride, pH 7.2, 10 mg/mL Bovine Serum Albumin (BSA) - Immunoglobulin and Protease free
Preservative:	Sodium azide
Precaution of Use:	This product contains sodium azide: a POISONOUS AND HAZARDOUS SUBSTANCE which should be handled by trained staff only.
Storage:	4 °C
Expiry Date:	12 months

Images



Dot Blot

Image 1. Dot Blot of STREPTAVIDIN Fluorescein Conjugated. Dot Blot of STREPTAVIDIN Fluorescein Conjugated. Lane A: BSA-Biotin. Lane B: BSA. Lanes 1: load 100ng, 2-5: serial dilution 3 fold. Primary Antibody: n/a Secondary Antibody: Streptavidin Fluorescein Conjugated at 1 mg/mL at RT for 30 minutes. Block: ABIN925618 at RT for 30 minutes.