

Datasheet for ABIN964548

Transferrin Protein (TF) (Texas Red (TR))**1** Image[Go to Product page](#)

Overview

Quantity:	1 mg
Target:	Transferrin (TF)
Origin:	Human
Host:	Please inquire
Protein Type:	Native
Purification tag / Conjugate:	This Transferrin protein is labelled with Texas Red (TR).

Product Details

Characteristics:	Concentration Definition: by UV absorbance at 280 nm
Purification:	Transferrin

Target Details

Target:	Transferrin (TF)
Alternative Name:	Transferrin (TF Products)
Pathways:	Transition Metal Ion Homeostasis

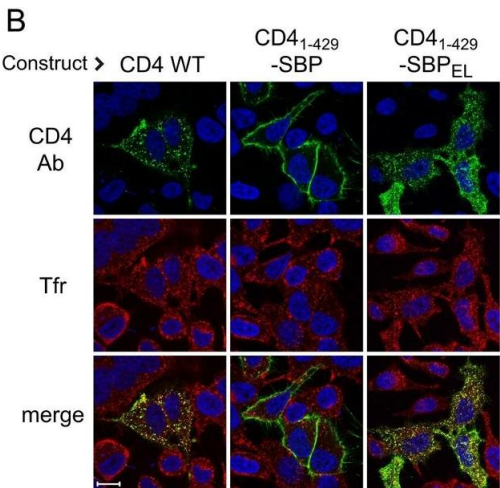
Application Details

Application Notes:	This product is designed for immunofluorescence microscopy, fluorescence based plate assays (FLISA) and fluorescent western blotting. This product is also suitable for multiplex analysis, including multicolor imaging, utilizing various commercial platforms.
Restrictions:	For Research Use only

Handling

Format:	Lyophilized
Reconstitution:	Restore with deionized water (or equivalent)
Concentration:	1.0 mg/mL
Buffer:	0.02 M Potassium Phosphate, 0.15 M Sodium Chloride, pH 7.2
Preservative:	Sodium azide
Precaution of Use:	This product contains sodium azide: a POISONOUS AND HAZARDOUS SUBSTANCE which should be handled by trained staff only.
Storage:	4 °C

Images



Immunofluorescence

Image 1. Generation of endocytic signal within SBP. The engineered signal mediates endocytic traffic. Cells were transfected with the indicated constructs. At 24 h later, cells were incubated in the cold with Alexa 488–conjugated anti-CD4 antibodies, followed by 20 min of incubation at 37°C in the presence of 20 ng/ml Texas Red–conjugated transferrin; cells expressing wild-type CD4 also received 100 ng/ml PMA (Pitcher et al., 1999). Cells were fixed, and nuclei were stained with Hoechst. Source: PMC4831884