

Datasheet for ABIN964615  
**anti-CTCF antibody (C-Term)**



[Go to Product page](#)

2 Images

1 Publication

## Overview

Quantity:	100 µg
Target:	CTCF
Binding Specificity:	C-Term
Reactivity:	Human, Mouse
Host:	Rabbit
Clonality:	Polyclonal
Application:	Western Blotting (WB), Immunohistochemistry (IHC), ELISA

## Product Details

Purpose:	CTCF Antibody
Immunogen:	Immunogen: CTCF affinity purified antibody was prepared by repeated immunizations with a synthetic peptide corresponding to a region near the C-terminus of CTCF protein. Immunogen Type: Conjugated Peptide
Isotype:	IgG
Cross-Reactivity (Details):	This antibody reacts with endogenous CTCF protein.
Characteristics:	Synonyms: rabbit anti-CTCF Antibody, Transcriptional repressor CTCF, 11-zinc finger protein, CCCTC-binding factor, CTCFL paralog
Purification:	Anti-CTCF was affinity purified from monospecific antiserum by immunoaffinity chromatography.
Sterility:	Sterile filtered

## Target Details

Target:	CTCF
Alternative Name:	CTCF ( <a href="#">CTCF Products</a> )
Background:	<p>Background: Transcriptional repressor CTCF (also known as CCCTC-binding factor) is a transcription factor encoded by the CTCF gene. The CTCF, and the closely related Brother of the Regulator of Imprinted Sites (BORIS), are highly conserved zinc finger proteins implicated in diverse regulatory functions, including transcriptional activation/repression, insulation, imprinting, and X chromosome inactivation. Expression of BORIS is restricted to spermatocytes and is mutually exclusive of CTCF expression. CTCF is ubiquitously expressed in higher eukaryotes and contains a highly conserved and eleven zinc finger central DNA-binding domain, having very high homology between mouse, chicken, and human and is embedded within slightly divergent N and C termini. CTCF plays a critical role in the epigenetic regulation and chromatin remodeling. CTCF has been reported to bind to a variety of DNA target sites that perform distinct functions, including promoter activation or repression, hormone-responsive gene silencing, methylation-dependent chromatin insulation, and genomic imprinting.</p>
Gene ID:	10664
NCBI Accession:	<a href="#">NP_006556</a>
UniProt:	<a href="#">P49711</a>

## Application Details

Application Notes:	<p>Immunohistochemistry Dilution: 5 µg/mL</p> <p>Application Note: CTCF antibody has been tested by ELISA, Immunohistochemistry, and western blotting. Specific conditions for reactivity should be optimized by the end user. Expect a band approximately 82.8 kDa or 150 kDa in size corresponding to CTCF by western blotting in the appropriate cell lysate or extract.</p> <p>Western Blot Dilution: 1:500-1:2:000</p> <p>ELISA Dilution: 1:10,000-1:50,000</p> <p>Other: User Optimized</p>
Restrictions:	For Research Use only

## Handling

Format:	Liquid
Concentration:	1.3 mg/mL

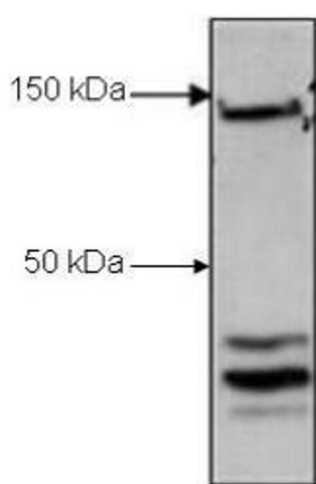
## Handling

Buffer:	Buffer: 0.02 M Potassium Phosphate, 0.15 M Sodium Chloride, pH 7.2 Stabilizer: None Preservative: 0.01 % (w/v) Sodium Azide
Preservative:	Sodium azide
Precaution of Use:	This product contains Sodium azide: a POISONOUS AND HAZARDOUS SUBSTANCE which should be handled by trained staff only.
Storage:	4 °C,-20 °C
Storage Comment:	Store CTCF antibody at -20° C prior to opening. Aliquot contents and freeze at -20° C or below for extended storage. Avoid cycles of freezing and thawing. Centrifuge product if not completely clear after standing at room temperature. This product is stable for several weeks at 4° C as an undiluted liquid. Dilute only prior to immediate use.
Expiry Date:	12 months

## Publications

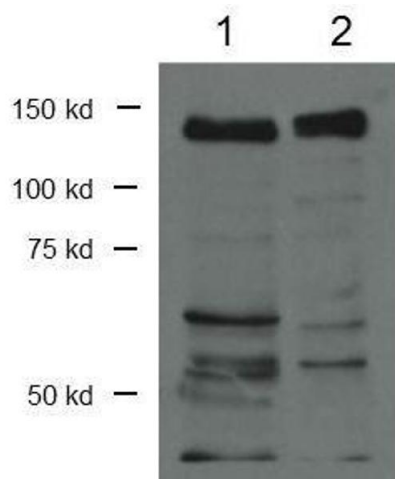
Product cited in:	Majumder, Rupp, Yang-lott, Koues, Kyle, Bassing, Oltz: "Domain-Specific and Stage-Intrinsic Changes in Tcrb Conformation during Thymocyte Development." in: <b>Journal of immunology (Baltimore, Md. : 1950)</b> , Vol. 195, Issue 3, pp. 1262-72, (2015) ( <a href="#">PubMed</a> ).
-------------------	---

## Images



### Western Blotting

**Image 1.** Western Blot of Rabbit Anti-CTCF antibody. Lane 1: H929 nuclear cell lysates. Load: 30 µg per lane. Primary antibody: CTCF antibody at 1.2 µg/mL for overnight at 4°C. Secondary antibody: rabbit secondary antibody at 1:5,000 for 45 min at RT. Block: 3% BSA overnight at 4°C. Predicted/Observed size: 82.8 kDa or 150 kDa for CTCF. Other band(s): CTCF splice variants.



#### Western Blotting

**Image 2.** Western Blot of Rabbit Anti-CTCF Antibody. Lane 1: P3XAg nuclear lysate. Lane 2: Flag-CTCF. Load: 30 µg per lane. Primary antibody: CTCF antibody at 1:1000 for overnight at 4°C. Secondary antibody: rabbit secondary antibody at 1:10,000 for 45 min at RT. Block: 5% BLOTTO overnight at 4°C. Predicted/Observed size: 82.8 kDa or 150 kDa for CTCF. Other band(s): CTCF splice variants.