

Datasheet for ABIN964617
anti-CXCL10 antibody[Go to Product page](#)

1 Image

Overview

Quantity:	100 µg
Target:	CXCL10
Reactivity:	Cow, Sheep, Goat
Host:	Rabbit
Clonality:	Polyclonal
Conjugate:	This CXCL10 antibody is un-conjugated
Application:	Western Blotting (WB), ELISA

Product Details

Immunogen:	<p>This protein-A purified antibody was prepared from whole rabbit serum produced by repeated immunizations with a recombinant protein raised in yeast, corresponding to the 83 amino acids of the mature bovine CXCL10 protein.</p> <p>Immunogen Type: RecombinantProtein</p>
Isotype:	IgG
Specificity:	<p>This product was Protein-A purified from monospecific antiserum by chromatography. This antibody is specific for bovine CXCL10 protein. A BLAST analysis was used to suggest cross-reactivity with CXCL10 from bovine, goat, and sheep sources based on 100% homology with the immunizing sequence. Partial reactivity is expected against panda based on 95% homology, with swine and ferret based on 93% homology, and with marmot based on 92% homology. Cross-reactivity with CXCL10 from other sources has not been determined.</p>
Cross-Reactivity:	Goat, Sheep (Ovine)

Product Details

Characteristics:	CXCL10 is a secreted chemotactic cytokine for monocytes and T-lymphocytes. It is involved in the inflammatory response. CXCL10 can be upregulated in response to infection. It binds to CXCR3.
Purification:	affinity purified
Sterility:	Sterile filtered

Target Details

Target:	CXCL10
Alternative Name:	CXCL10 (CXCL10 Products)
Background:	<p>CXCL10 is a secreted chemotactic cytokine for monocytes and T-lymphocytes. It is involved in the inflammatory response. CXCL10 can be upregulated in response to infection. It binds to CXCR3.</p> <p>Synonyms: IP-10, C-X-C motif chemokine 10, Small-inducible cytokine B10</p>
Gene ID:	615107
NCBI Accession:	NP_001040016
UniProt:	Q2KIQ8

Application Details

Application Notes:	This protein-A purified antibody is suitable for ELISA and Western blotting. Specific conditions for reactivity should be optimized by the end user. Expect a band approximately 9.3 kDa in size corresponding to bovine CXCL10 protein by western blotting in the appropriate cell lysate or extract.
Comment:	Gene Name: CXCL10
Restrictions:	For Research Use only

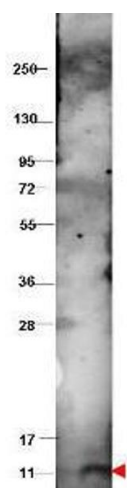
Handling

Format:	Lyophilized
Reconstitution:	Reconstitution Buffer: Restore with deionized water (or equivalent), Reconstitution Volume: 100 μ L
Concentration:	1.0 mg/mL

Handling

Buffer:	0.02 M Potassium Phosphate, 0.15 M Sodium Chloride, pH 7.2
Preservative:	Sodium azide
Precaution of Use:	This product contains sodium azide: a POISONOUS AND HAZARDOUS SUBSTANCE which should be handled by trained staff only.
Storage:	4 °C/-20 °C
Storage Comment:	Store vial at 4 °C prior to restoration. For extended storage aliquot contents and freeze at -20 °C or below. Avoid cycles of freezing and thawing. Centrifuge product if not completely clear after standing at room temperature. This product is stable for several weeks at 4 °C as an undiluted liquid. Dilute only prior to immediate use. Expiration date is one (1) year from date of opening.
Expiry Date:	12 months

Validation report #100071 for Immunofluorescence (IF)



Western Blotting

Image 1. Western blot using protein-A purified anti-bovine CXCL10 antibody shows detection of recombinant bovine CXCL10 at 9.3 kDa (arrowhead) raised in yeast. The protein was purified and resolved by SDS-PAGE, then transferred to PVDF membrane. Membrane was blocked with 3% BSA (BSA-30, diluted 1:10), and probed with 1 µg/mL primary antibody overnight at 4°C. After washing, membrane was probed with Conjugated Goat Anti-Rabbit IgG for 45 min at room temperature.