

Datasheet for ABIN964621  
**anti-CDK5 antibody**

4 Images



[Go to Product page](#)

## Overview

Quantity:	1 kit
Target:	CDK5
Reactivity:	Human, Mouse, Rat
Host:	Please inquire
Application:	Immunohistochemistry (IHC), Western Blotting (WB)

## Product Details

Purpose:	The Cyclin Dependent Kinase Antibody Sampler Kit provides an economical means to investigate cdk. The cdk antibody kit allows you to perform western blotting, ELISA, IP and Immunohistochemistry (IHC).
Sterility:	Sterile filtered

## Target Details

Target:	CDK5
Alternative Name:	Cyclin Dependent Kinase
Background:	Synonyms: Anti-cdc2 (p34), Anti-cdk2, Anti-cdk4, Anti-cdk5, Anti-cdk9 (PITALRE), Goat Anti-Rabbit IgG, antibody sample kit, Cyclin dependent kinase antibody

## Application Details

Application Notes:	Each kit contains one unit of the following products: (100 µL) Anti-cdc2 (p34) (RABBIT) Antibody (100 µL) Anti-cdk2 (RABBIT) Antibody (100 µL) Anti-cdk4 (RABBIT) Antibody (100 µL)
--------------------	---

## Application Details

Anti-cdk5 (RABBIT) Antibody (100 µL) Anti-cdk9 (PITALRE) (RABBIT) Antibody (100 µg) Anti-RABBIT IgG (H&L) (GOAT) Antibody Peroxidase Conjugated

Restrictions: For Research Use only

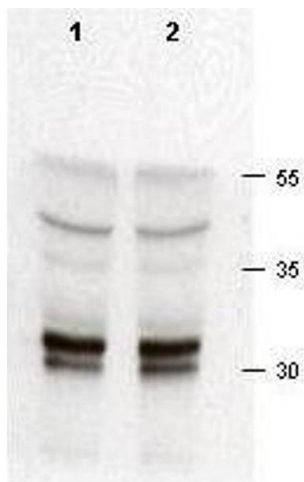
## Handling

Format: Liquid

Storage: -20 °C

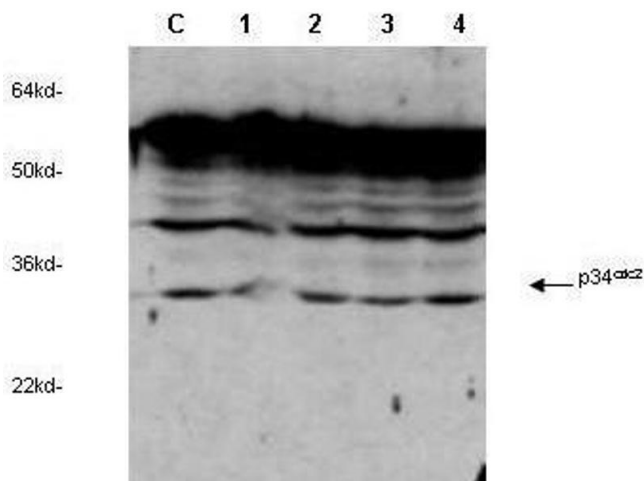
Storage Comment: Store antibodies at -20° C prior to opening. Aliquot contents and freeze at -20° C or below for extended storage. Avoid cycles of freezing and thawing. Centrifuge product if not completely clear after standing at room temperature. This product is stable for several weeks at 4° C as an undiluted liquid. Dilute only prior to immediate use.

## Images



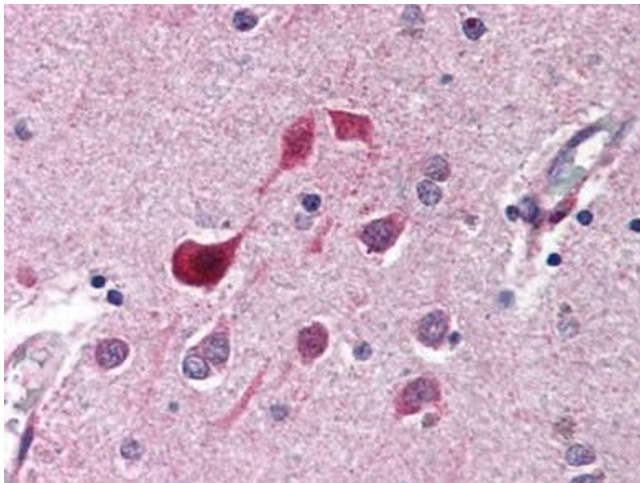
### Western Blotting

**Image 1.** Rabbit anti-cdk2 was used at a 1:200 dilution to detect cdk-2 in asynchronous HeLa cell lysates (run in duplicate). Approximately 50 µg of lysate was separated on a 15% SDS-PAGE gel. Cdk-2 is indicated by an arrowhead as a 32-33 kDa band. Note that multiple isoforms as well as phosphorylated forms of cdk-2 may be detected by this antibody. Primary antibody was reacted at room temperature for 1 h. After subsequent washing, a 1:5,000 dilution of HRP conjugated Gt-a-Rabbit IgG preceded color development.



### Western Blotting

**Image 2.** anti-cdc2 Cyclin Dependent Kinase was used to detect human p34cdc2 by western blot in untreated (Control) and drug treated lysates of MCF-7 cells. Lane 1-4 represents 3.1 $\mu$ M, 6.2 $\mu$ M, 12.5 $\mu$ M and 25.0 $\mu$ M genistein treatment of cells before lysates were prepared. Detection occurs using a 1:1,000 dilution. Although this antiserum detects non-specific bands at higher MW, a clear induction of signal is observed as the concentration of drug is increased. Personnel Communication, Xiao He Yang, University of Oklahoma Health Sciences Center.



### Immunohistochemistry

**Image 3.** anti-CDK5 antibody was diluted 1:500 to detect CDK5 in human brain cortex tissue. Tissue was formalin fixed and paraffin embedded. No pre-treatment of sample was required. The image shows the localization of antibody as the precipitated red signal, with a hematoxylin purple nuclear counter stain.

Please check the [product details page](#) for more images. Overall 4 images are available for ABIN964621.