

Datasheet for ABIN964641

anti-ESRP1 antibody



[Go to Product page](#)

1 Image

1 Publication

Overview

Quantity:	100 µg
Target:	ESRP1
Reactivity:	Mouse
Host:	Mouse
Clonality:	Monoclonal
Application:	Western Blotting (WB), ELISA

Product Details

Purpose:	Esrp-1/2 Antibody
Immunogen:	Immunogen: Anti-Esrp-1/2 was produced by repeated immunizations of full length recombinant mouse Esrp-1 fusion protein. Immunogen Type: Recombinant Protein
Clone:	23A7-C9
Isotype:	IgG1
Cross-Reactivity (Details):	This antibody reacts with both mouse Esrp-1 and Esrp-2 proteins.
Characteristics:	Synonyms: mouse anti-Esrp1/2 antibody, mouse anti-Esrp1 antibody, mouse anti-Ersp2 antibody, Rbm35a, Epithelial splicing regulatory protein 1, RNA-binding protein 35A, RNA-binding motif protein 35A, RNA-binding protein 35B, RNA-binding motif protein 35B
Purification:	This antibody was purified from tissue culture supernatant by Protein-A chromatography followed by extensive dialysis against the buffer stated above.
Sterility:	Sterile filtered

Target Details

Target:	ESRP1
Alternative Name:	Esrp1/Esrp2 (ESRP1 Products)
Background:	Background: Epithelial splicing regulatory protein-1 (Esrp-1) and Esrp-2 are mRNA splicing factors that regulate the formation of epithelial cell-specific isoforms. They specifically regulate the expression of FGFR2-IIIb, an epithelial cell-specific isoform of FGFR2, and also regulates the splicing of CD44, CTNND1, ENAH, 3 transcripts that undergo changes in splicing during the epithelial-to-mesenchymal transition (EMT). Esrp-1 and -2 act by directly binding specific sequences in mRNAs. They bind the GU-rich sequence motifs in the ISE/ISS-3, a cis-element regulatory region present in the mRNA of FGFR2.
Gene ID:	77411
NCBI Accession:	NP_789808
UniProt:	Q8K0G8

Application Details

Application Notes:	<p>Application Note: This protein-A purified antibody has been tested for use western blotting. Specific conditions for reactivity should be optimized by the end user. Expect a band approximately 75.5 kDa in size corresponding to Esrp-1 and 77.4 kDa in size corresponding to Esrp-2 by western blotting in the appropriate cell lysate or extract.</p> <p>Western Blot Dilution: 1:1000</p> <p>ELISA Dilution: 1:750,000</p> <p>Other: User Optimized</p>
Restrictions:	For Research Use only

Handling

Format:	Liquid
Concentration:	1.0 mg/mL
Buffer:	Buffer: 0.02 M Potassium Phosphate, 0.15 M Sodium Chloride, pH 7.2
	Stabilizer: None
	Preservative: 0.01 % (w/v) Sodium Azide
Preservative:	Sodium azide
Precaution of Use:	This product contains Sodium azide: a POISONOUS AND HAZARDOUS SUBSTANCE which

Handling

should be handled by trained staff only.

Storage: 4 °C,-20 °C

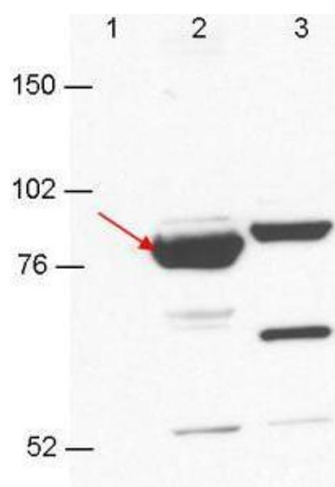
Storage Comment: Store vial at -20° C prior to opening. Aliquot contents and freeze at -20° C or below for extended storage. Avoid cycles of freezing and thawing. Centrifuge product if not completely clear after standing at room temperature. This product is stable for several weeks at 4° C as an undiluted liquid. Dilute only prior to immediate use.

Expiry Date: 12 months

Publications

Product cited in: Warzecha, Jiang, Amirikian, Dittmar, Lu, Shen, Guo, Xing, Carstens: "An ESRP-regulated splicing programme is abrogated during the epithelial-mesenchymal transition." in: **The EMBO journal**, Vol. 29, Issue 19, pp. 3286-300, (2010) ([PubMed](#)).

Images



Western Blotting

Image 1. Anti-Esrp-1/2 antibody by western blot shows detection in 293T cell extracts. Lane 1: GFP-transfected. Lane 2: Esrp-1 transfected (arrow). Lane 3: Esrp-2 transfected. Each lane contains approximately 5 µg of lysate. Primary antibody was used at a 1:1000 dilution in PBS-T plus milk, and reacted for 1hr at room temperature. The membrane was washed and reacted with a 1:10,000 dilution of an anti-mouse ECL antibody for 1hr at room temperature. Molecular weight estimation was made by comparison to prestained MW markers.