

Datasheet for ABIN964734
anti-FIL1d antibody



[Go to Product page](#)

1 Image

Overview

Quantity:	100 µg
Target:	FIL1d
Reactivity:	Cow
Host:	Rabbit
Clonality:	Polyclonal
Application:	Western Blotting (WB), ELISA

Product Details

Purpose:	IL-1F5 Antibody
Immunogen:	Immunogen: This protein-A purified antibody was prepared from whole rabbit serum produced by repeated immunizations with a recombinant protein raised in yeast, corresponding to the 155 amino acids of the mature bovine IL-1F5 protein. Immunogen Type: Recombinant Protein
Isotype:	IgG
Cross-Reactivity (Details):	This antibody is specific for bovine IL-1F5 protein.
Characteristics:	Synonyms: rabbit anti-IL-1F5 antibody, rabbit anti-Interleukin 1 family, member 5 (Delta)
Purification:	This product was Protein-A purified from monospecific antiserum by chromatography.

Target Details

Target:	FIL1d
Alternative Name:	IL1F5 (FIL1d Products)

Target Details

Background: Background: Interleukin-1F5 is a recently discovered cytokine which was shown to specifically inhibit the activation of NF-kappaB induced by interleukin 1 family, member 6 (IL1F6) in humans. There is very little published regarding the bovine IL1F5 protein. In the human, this gene and eight other interleukin 1 family genes form a cytokine gene cluster on chromosome 2. Expression of the gene appears to be restricted to various epithelial cell populations. Costelloe et al (2008) have identified SIGIRR [single immunoglobulin domain-containing IL1R-related protein] as a receptor for human IL1F5. Anti-IL-1F5 antibody is ideal for investigators involved in Signal Transduction and Immunology research.

Gene ID: 518514, 115494990

UniProt: [Q0VC52](#)

Application Details

Application Notes: Application Note: This protein-A purified Interleukin-1F5 antibody has been tested by ELISA and Western blotting. Specific conditions for reactivity should be optimized by the end user. Expect a band approximately 17.1 kDa in size corresponding to bovine IL-1F5 protein by western blotting in the appropriate cell lysate or extract.

Western Blot Dilution: 1 µg/mL

ELISA Dilution: 8,000

Other: User Optimized

Restrictions: For Research Use only

Handling

Format: Lyophilized

Reconstitution: Reconstitution Volume: 100 µL

Reconstitution Buffer: Restore with deionized water (or equivalent)

Concentration: 1.0 µg/mL

Buffer: Buffer: 0.02 M Potassium Phosphate, 0.15 M Sodium Chloride, pH 7.2

Stabilizer: None

Preservative: 0.01 % (w/v) Sodium Azide

Preservative: Sodium azide

Precaution of Use: This product contains Sodium azide: a POISONOUS AND HAZARDOUS SUBSTANCE which should be handled by trained staff only.

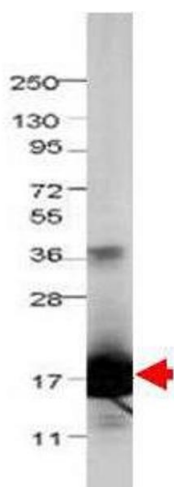
Handling

Storage: 4 °C, -20 °C

Storage Comment: Store vial at 4° C prior to restoration. For extended storage aliquot contents and freeze at -20° C or below. Avoid cycles of freezing and thawing. Centrifuge product if not completely clear after standing at room temperature. This product is stable for several weeks at 4° C as an undiluted liquid. Dilute only prior to immediate use.

Expiry Date: 12 months

Images



Western Blotting

Image 1. Western blot using Protein-A Purified anti-bovine IL-1F5 antibody shows detection of recombinant bovine IL-1F5 at 17.1 kDa (arrowhead) raised in yeast. The identity of the band at 36 kDa is not known. The protein was purified and resolved by SDS-PAGE, then transferred to PVDF membrane. Membrane was blocked with 3% BSA (BSA-30, diluted 1:10), and probed with 1 µg/mL primary antibody overnight at 4°C. After washing, membrane was probed with Conjugated Goat Anti-Rabbit IgG for 45 min at room temperature.