



Datasheet for ABIN964781 anti-CCL3 antibody



[Go to Product page](#)

1 Image

Overview

Quantity:	100 µg
Target:	CCL3
Reactivity:	Mouse
Host:	Rabbit
Clonality:	Polyclonal
Conjugate:	This CCL3 antibody is un-conjugated
Application:	Western Blotting (WB), ELISA

Product Details

Immunogen:	This IgG fraction antibody was prepared from rabbit antiserum after repeated immunizations with recombinant truncated mouse MIP-1alpha protein produced in E.coli. Immunogen Type: RecombinantProtein
Isotype:	IgG
Specificity:	This product is an IgG fraction antibody purified from monospecific antiserum by a multi-step process which includes delipidation, salt fractionation and ion exchange chromatography followed by extensive dialysis against the buffer stated above. This antibody is specific for mouse MIP-1alpha protein. Cross-reactivity with MIP-1alpha from other sources has not been determined.
Characteristics:	Mouse MIP-1alpha, or Ccl3, of the intercrine beta (chemokine CC family) is a secreted cytokine with inflammatory, pyrogenic and chemokinetic properties. It is expressed in lung, spleen, and pancreas, and has a potent chemotactic activity for eosinophils. Ccl3 binding to a high-affinity receptor activates calcium release in neutrophils.

Product Details

Purification: purified

Target Details

Target: CCL3

Alternative Name: MIP-1 alpha ([CCL3 Products](#))

Background: Mouse MIP-1 α , or Ccl3, of the intercrine beta (chemokine CC family) is a secreted cytokine with inflammatory, pyrogenic and chemokinetic properties. It is expressed in lung, spleen, and pancreas, and has a potent chemotactic activity for eosinophils. Ccl3 binding to a high-affinity receptor activates calcium release in neutrophils.

Synonyms: Mouse Macrophage Inflammatory Protein-1-alpha, Ccl3 cytokine, C-C motif chemokine 3, Small-inducible cytokine A3, Macrophage inflammatory protein 1- α , MIP-1-alpha, TY-5, SIS-alpha, Heparin-binding chemotaxis protein, L2G25B, Scya3 protein

Gene ID: 20302

NCBI Accession: [NP_035467](#)

UniProt: [P10855](#)

Pathways: [Cellular Response to Molecule of Bacterial Origin](#), [Autophagy](#)

Application Details

Application Notes: This purified antibody has been tested for use in ELISA and western blotting. Specific conditions for reactivity should be optimized by the end user. Expect a band approximately 7-8 kDa in size corresponding to the mature 92 amino acid mouse MIP-1 α /Ccl3 protein by western blotting in appropriate cell lysate or extract.

Comment: Gene Name: Ccl3

Restrictions: For Research Use only

Handling

Format: Lyophilized

Reconstitution: Reconstitution Buffer: Restore with deionized water (or equivalent), Reconstitution Volume: 100 μ L

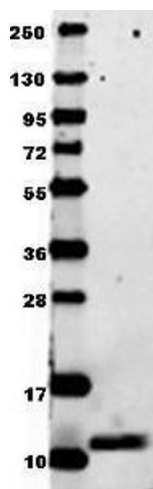
Concentration: 1.0 mg/mL

Buffer: 0.02 M Potassium Phosphate, 0.15 M Sodium Chloride, pH 7.2

Handling

Preservative:	Without preservative
Storage:	4 °C/-20 °C
Storage Comment:	Store vial at 4 °C prior to restoration. For extended storage aliquot contents and freeze at -20 °C or below. Avoid cycles of freezing and thawing. Centrifuge product if not completely clear after standing at room temperature. This product is stable for several weeks at 4 °C as an undiluted liquid. Dilute only prior to immediate use. Expiration date is six (6) months from date of opening.
Expiry Date:	6 months

Images



Western Blotting

Image 1. Anti-mouse MIP-1a in western blot shows detection of recombinant mouse MIP-1a/Ccl3 raised in E.coli. Recombinant truncated (0.1 µg, 7.8 kDa) protein was loaded onto and resolved by SDS-PAGE, then transferred to nitrocellulose. The membrane was blocked with 1% BSA in TBST for 30 min at RT, followed by incubation with , Inc. Anti-Mouse MIP-1a/Ccl3. After washing, membrane was probed with secondary antibody 649 Conjugated Anti-Rabbit IgG (H&L) (Goat) Antibody diluted 1:20,000 in blocking buffer for 30 min. at RT. Data was collected using Bio-Rad 4000 MP imaging system.