

Datasheet for ABIN964877

Rabbit anti-Pig IgG (Heavy & Light Chain) Antibody (FITC)[Go to Product page](#)**1** Image

Overview

Quantity:	20 mg
Target:	IgG
Binding Specificity:	Heavy & Light Chain
Reactivity:	Pig
Host:	Rabbit
Clonality:	Polyclonal
Conjugate:	FITC
Application:	Flow Cytometry (FACS), FLISA, Fluorescence Microscopy (FM)

Product Details

Immunogen:	Immunogen: Swine IgG whole molecule
Isotype:	IgG
Fragment:	F(ab') ₂ fragment
Specificity:	Assay by immunoelectrophoresis resulted in a single precipitin arc against anti-Fluorescein, anti-Rabbit Serum, Swine IgG and Swine Serum.
Characteristics:	This product is designed for immunofluorescence microscopy, fluorescence based plate assays (FLISA) and fluorescent western blotting. This product is also suitable for multiplex analysis, including multicolor imaging, utilizing various commercial platforms.
Purification:	This product is a F(ab') ₂ fragment of an IgG fraction antibody purified from monospecific antiserum by a multi-step process which includes delipidation, salt fractionation, ion exchange chromatography and pepsin digestion followed by extensive dialysis against the buffer stated

Product Details

above. Assay by immunoelectrophoresis resulted in a single precipitin arc against anti-Fluorescein, anti-Rabbit Serum, Swine IgG and Swine Serum. No reaction was observed against anti-Rabbit IgG F(c) or anti-Pepsin.

Labeling Ratio: 2.5

Target Details

Target: IgG

Abstract: [IgG Products](#)

Target Type: Antibody

Background: Synonyms: rabbit F(ab')₂ anti-swine IgG Fluorescein Conjugated Antibody, rabbit F(ab')₂ anti-swine IgG FITC Conjugated Antibody

Background: This product is designed for immunofluorescence microscopy, fluorescence based plate assays (FLISA) and fluorescent western blotting. This product is also suitable for multiplex analysis, including multicolor imaging, utilizing various commercial platforms.

Application Details

Application Notes: Application Note: Suitable for immunomicroscopy and flow cytometry or FACS analysis as well as other antibody based fluorescent assays requiring extremely low background levels, absence of F(c) mediated binding, lot-to-lot consistency, high titer and specificity.

FLISA Dilution: 1:10,000 - 1:50,000

Flow Cytometry Dilution: 1:500 - 1:2,500

IF Microscopy Dilution: 1:1,000 - 1:5,000

Comment: Excitation/Emission wavelength: 494 nm/514 nm

Restrictions: For Research Use only

Handling

Format: Lyophilized

Reconstitution: Reconstitution Volume: 2.0 mL

Reconstitution Buffer: Restore with deionized water (or equivalent)

Concentration: 10.0 mg/mL

Buffer: Buffer: 0.01 M Sodium Phosphate, 0.15 M Sodium Chloride, pH 7.2

Handling

Stabilizer: 10 mg/mL Bovine Serum Albumin (BSA) - Immunoglobulin and Protease free

Preservative: 0.01 % (w/v) Thimerosal

Preservative: Thimerosal (Merthiolate)

Precaution of Use: This product contains Thimerosal (Merthiolate): a POISONOUS AND HAZARDOUS SUBSTANCE which should be handled by trained staff only.

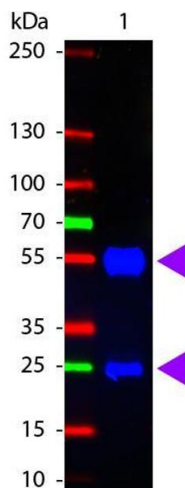
Handling Advice: Product is photosensitive and should be protected from light.
Avoid cycles of freezing and thawing.

Storage: RT, 4 °C, -20 °C

Storage Comment: Store vial at 4 °C prior to restoration. For extended storage aliquot contents and freeze at -24 °C or below. This product is stable for several weeks at 4 °C as an undiluted liquid.

Expiry Date: 12 months

Images



Western Blotting

Image 1. Western Blot of Fluorescein conjugated Rabbit anti-Swine IgG antibody. Lane 1: Swine IgG. Lane 2: none. Load: 100 ng per lane. Primary antibody: none. Secondary antibody: Fluorescein swine secondary antibody at 1:1,000 for 60 min at RT. Block: ABIN925618 for 30 min at RT. Predicted/Observed size: 55 kDa, 28 kDa for Swine IgG. Other band(s): none.