

Datasheet for ABIN964940

**Rabbit anti-Goat IgG (Heavy & Light Chain) Antibody (Atto 488)
- Preadsorbed**[Go to Product page](#)**2** Images

Overview

Quantity:	500 µg
Target:	IgG
Binding Specificity:	Heavy & Light Chain
Reactivity:	Goat
Host:	Rabbit
Clonality:	Polyclonal
Conjugate:	Atto 488
Application:	Western Blotting (WB), FLISA, Fluorescence Microscopy (FM)

Product Details

Immunogen:	Immunogen: Goat IgG whole molecule
Isotype:	IgG
Specificity:	Assay by immunoelectrophoresis resulted in a single precipitin arc against anti-Rabbit Serum, Goat IgG and Goat Serum.
Characteristics:	This product is designed for STED microscopy, FRET, immunofluorescence microscopy, fluorescence based plate assays (FLISA) and fluorescent western blotting. This product is also suitable for multiplex analysis, including multicolor imaging, utilizing various commercial platforms.
Purification:	Preadsorption: Solid phase absorption
Labeling Ratio:	3.8

Target Details

Target:	IgG
Abstract:	IgG Products
Target Type:	Antibody
Background:	<p>Synonyms: rabbit anti-Goat IgG ATTO 488 Conjugated Antibody, rabbit anti-Goat IgG Antibody ATTO488 Conjugation</p> <p>Background: Anti-Goat IgG ATTO dye Antibody generated in rabbit detects goat IgG. Secreted as part of the adaptive immune response by plasma B cells, immunoglobulin G constitutes 75 % of serum immunoglobulins. Immunoglobulin G binds to viruses, bacteria, as well as fungi and facilitates their destruction or neutralization via agglutination (and thereby immobilizing them), activation of the compliment cascade, and opsinization for phagocytosis. The whole IgG molecule possesses both the F(c) region, recognized by high-affinity Fc receptor proteins, as well as the F(ab) region possessing the epitope-recognition site. Both heavy and light chains of the antibody molecule are present.</p>

Application Details

Application Notes:	<p>Application Note: GOAT IgG (H&L) conjugated to ATTO 488 is designed for STED microscopy, FRET, immunofluorescence microscopy, fluorescence based plate assays (FLISA) and fluorescent western blotting. This product is also suitable for multiplex analysis, including multicolor imaging, utilizing various commercial platforms. The emission spectra for this ATTO conjugate matches the principle output wavelengths of most common fluorescence instrumentation.</p> <p>FLISA Dilution: >1:20,000</p> <p>Western Blot Dilution: >1:10,000</p> <p>IF Microscopy Dilution: >1:5,000</p>
Comment:	The emission spectra for this ATTO conjugate matches the principle output wavelengths of most common fluorescence instrumentation.
Restrictions:	For Research Use only

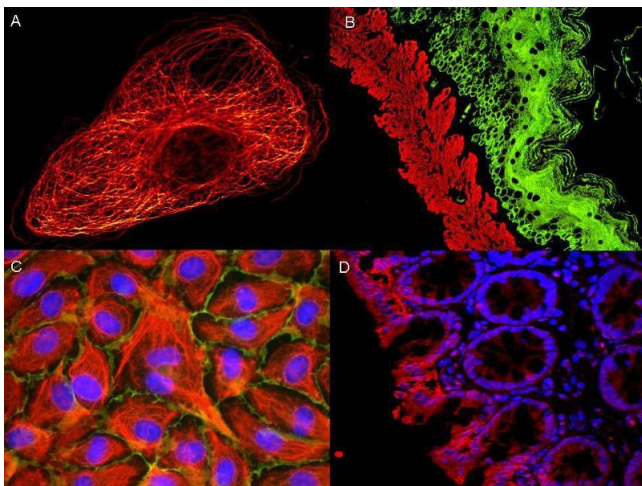
Handling

Format:	Lyophilized
Reconstitution:	Reconstitution Volume: 500 µL
	Reconstitution Buffer: Restore with deionized water (or equivalent)

Handling

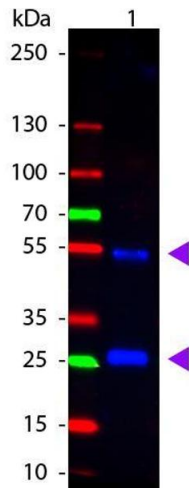
Concentration:	1.0 mg/mL
Buffer:	Buffer: 0.02 M Potassium Phosphate, 0.15 M Sodium Chloride, pH 7.2 Stabilizer: 10 mg/mL Bovine Serum Albumin (BSA) - Immunoglobulin and Protease free Preservative: 0.01 % (w/v) Sodium Azide
Preservative:	Sodium azide
Precaution of Use:	This product contains Sodium azide: a POISONOUS AND HAZARDOUS SUBSTANCE which should be handled by trained staff only.
Handling Advice:	Avoid cycles of freezing and thawing. This vial contains a relatively low volume of reagent (25 μ L). To minimize loss of volume dilute 1:10 by adding 225 μ L of the buffer stated above directly to the vial. Recap, mix thoroughly and briefly centrifuge to collect the volume at the bottom of the vial. Use this intermediate dilution when calculating final dilutions as recommended below. Product is photosensitive and should be protected from light.
Storage:	RT, 4 °C, -20 °C
Storage Comment:	Store vial at -20 °C or below prior to opening. Store the vial at -20 °C or below after dilution.
Expiry Date:	12 months

Images



Immunofluorescence

Image 1.



Western Blotting

Image 2. Western Blot of Rabbit anti-Goat IgG Atto488 Conjugated Antibody. Lane 1: Goat IgG. Lane 2: None. Load: 50 ng per lane. Primary antibody: None. Secondary antibody: Atto488 rabbit secondary antibody at 1:1,000 for 60 min at RT. Block: ABIN925618 for 30 min at RT. Predicted/Observed size: 28 & 55 kDa, 28 & 55 kDa for Goat IgG. Other band(s): None.