

Datasheet for ABIN964942

Rabbit anti-Goat IgG (Heavy & Light Chain) Antibody (Atto 647N) - Preadsorbed



[Go to Product page](#)

1 Image

Overview

Quantity:	100 µg
Target:	IgG
Binding Specificity:	Heavy & Light Chain
Reactivity:	Goat
Host:	Rabbit
Clonality:	Polyclonal
Conjugate:	Atto 647N
Application:	Western Blotting (WB), FLISA, Fluorescence Microscopy (FM)

Product Details

Immunogen:	Immunogen: Goat IgG whole molecule
Isotype:	IgG
Specificity:	Assay by immunoelectrophoresis resulted in a single precipitin arc against anti-Rabbit Serum, Goat IgG and Goat Serum.
Characteristics:	<p>Anti-Goat IgG (H&L) conjugated by ATTO 647N is designed for STED microscopy, FRET, immunofluorescence microscopy, fluorescence based plate assays (FLISA) and fluorescent western blotting. This product is also suitable for multiplex analysis, including multicolor imaging, utilizing various commercial platforms.</p> <p>This product is designed for STED microscopy, FRET, immunofluorescence microscopy, fluorescence based plate assays (FLISA) and fluorescent western blotting. This product is also suitable for multiplex analysis, including multicolor imaging, utilizing various commercial</p>

Product Details

platforms.

Purification: Preadsorption: Solid phase absorption

Labeling Ratio: 2.5

Target Details

Target: IgG

Abstract: [IgG Products](#)

Target Type: Antibody

Background: Synonyms: rabbit anti-Goat IgG ATTO 647N Conjugated Antibody, rabbit anti-Goat IgG Antibody ATTO647N Conjugation

Background: Anti-Goat IgG ATTO dye Antibody generated in rabbit detects goat IgG. Secreted as part of the adaptive immune response by plasma B cells, immunoglobulin G constitutes 75 % of serum immunoglobulins. Immunoglobulin G binds to viruses, bacteria, as well as fungi and facilitates their destruction or neutralization via agglutination (and thereby immobilizing them), activation of the complement cascade, and opsonization for phagocytosis. The whole IgG molecule possesses both the F(c) region, recognized by high-affinity Fc receptor proteins, as well as the F(ab) region possessing the epitope-recognition site. Both heavy and light chains of the antibody molecule are present.

Application Details

Application Notes: Application Note: Anti-Goat IgG (H&L) conjugated by ATTO 647N is designed for STED microscopy, FRET, immunofluorescence microscopy, fluorescence based plate assays (FLISA) and fluorescent western blotting. This product is also suitable for multiplex analysis, including multicolor imaging, utilizing various commercial platforms. The emission spectra for this ATTO conjugate matches the principle output wavelengths of most common fluorescence instrumentation.

FLISA Dilution: >1:20,000

Western Blot Dilution: >1:10,000

IF Microscopy Dilution: >1:5,000

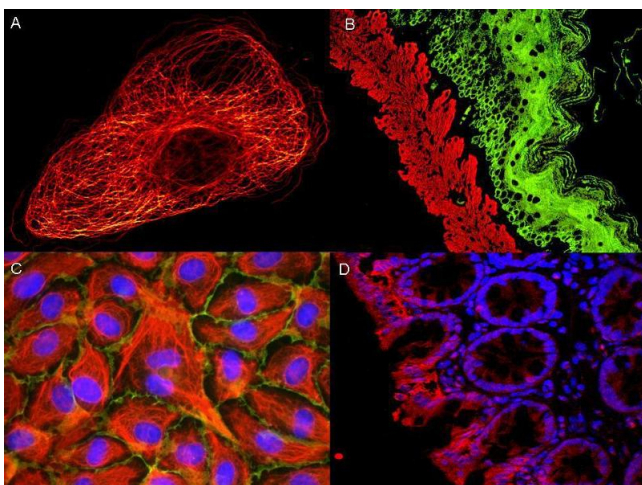
Comment: The emission spectra for this ATTO conjugate matches the principle output wavelengths of most common fluorescence instrumentation.

Restrictions: For Research Use only

Handling

Format:	Lyophilized
Reconstitution:	Reconstitution Volume: 500 μ L Reconstitution Buffer: Restore with deionized water (or equivalent)
Concentration:	1.0 mg/mL
Buffer:	Buffer: 0.02 M Potassium Phosphate, 0.15 M Sodium Chloride, pH 7.2 Stabilizer: 10 mg/mL Bovine Serum Albumin (BSA) - Immunoglobulin and Protease free Preservative: 0.01 % (w/v) Sodium Azide
Preservative:	Sodium azide
Precaution of Use:	This product contains Sodium azide: a POISONOUS AND HAZARDOUS SUBSTANCE which should be handled by trained staff only.
Handling Advice:	Avoid cycles of freezing and thawing. Product is photosensitive and should be protected from light.
Storage:	RT, 4 $^{\circ}$ C, -20 $^{\circ}$ C
Storage Comment:	Store vial at -20 $^{\circ}$ C prior to opening. Aliquot contents and freeze at -20 $^{\circ}$ C or below for extended storage. This product is stable for several weeks at 0 $^{\circ}$ C as an undiluted liquid.
Expiry Date:	12 months

Images



Immunofluorescence

Image 1.