



Datasheet for ABIN964943

Donkey anti-Donkey IgG (Heavy & Light Chain) Antibody (PE) - Preadsorbed



[Go to Product page](#)

2 Images

Overview

Quantity:	1 mL
Target:	IgG
Binding Specificity:	Heavy & Light Chain
Reactivity:	Goat, Donkey
Host:	Donkey
Clonality:	Polyclonal
Conjugate:	PE
Application:	Flow Cytometry (FACS), Fluorescence Microscopy (FM)

Product Details

Immunogen:	Immunogen: Goat IgG whole molecule
Isotype:	IgG
Specificity:	Goat IgG antibody recognizes IgG heavy and light chains. Assay by immunoelectrophoresis resulted in a single precipitin arc against anti-Phycoerythrin, anti-Donkey Serum, Goat IgG and Goat Serum.
Characteristics:	Anti-Goat IgG (H&L) antibody is ideal for investigators involved in serum component protein research.
Purification:	Preadsorption: Solid phase absorption

Target Details

Target:	IgG
---------	-----

Target Details

Abstract: [IgG Products](#)

Target Type: Antibody

Background: Synonyms: Donkey anti-Goat IgG Antibody Phycoerythrin Conjugation, Donkey anti-Goat IgG PE Conjugated Antibody

Background: Goat IgG antibody recognizes IgG heavy and light chains. Anti-Goat IgG Phycoerythrin Antibody generated in donkey detects goat IgG. Secreted as part of the adaptive immune response by plasma B cells, immunoglobulin G constitutes 75 % of serum immunoglobulins. Immunoglobulin G binds to viruses, bacteria, as well as fungi and facilitates their destruction or neutralization via agglutination (and thereby immobilizing them), activation of the compliment cascade, and opsinization for phagocytosis. The whole IgG molecule possesses both the F(c) region, recognized by high-affinity Fc receptor proteins, as well as the F(ab) region possessing the epitope-recognition site. Both heavy and light chains of the antibody molecule are present. Anti-Goat IgG (H&L) antibody is ideal for investigators involved in serum component protein research.

Application Details

Application Notes: Application Note: Anti-Goat IgG (H&L) antibody is suitable for immunomicroscopy and flow cytometry or FACS analysis as well as other antibody based fluorescent assays requiring extremely low background levels, absence of F(c) mediated binding, lot-to-lot consistency, high titer and specificity. The maximum amount of reagent required to stain 1×10^6 cells in flow cytometry is approximately 1.0 μg of antibody conjugate. Lesser amounts of reagent may be sufficient for staining. Optimal titers for other applications should be determined by the researcher. As a general guideline dilutions of 1:100 to 1:250 should be suitable for most applications. Specific conditions for reactivity should be optimized by the end user.

Flow Cytometry Dilution: 1:100 - 1:250

IF Microscopy Dilution: 1:100 - 1:250

Restrictions: For Research Use only

Handling

Format: Lyophilized

Reconstitution: Reconstitution Volume: 1.0 mL

Concentration: 0.5 mg/mL

Buffer: Buffer: 0.02 M Potassium Phosphate, 0.15 M Sodium Chloride, pH 7.2

Handling

Stabilizer: 10 mg/mL Bovine Serum Albumin (BSA) - Immunoglobulin and Protease free

Preservative: 0.01 % (w/v) Sodium Azide

Preservative: Sodium azide

Precaution of Use: This product contains Sodium azide: a POISONOUS AND HAZARDOUS SUBSTANCE which should be handled by trained staff only.

Handling Advice: Product is photosensitive and should be protected from light.
Avoid cycles of freezing and thawing.

Storage: RT, 4 °C

Storage Comment: Store vial at -20 °C prior to opening. Aliquot contents and freeze at -20 °C or below for extended storage. This product is stable for several weeks at 0 °C as an undiluted liquid.

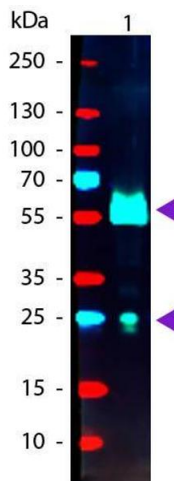
Expiry Date: 6 months

Images



Dot Blot

Image 1. Dot Blot of Donkey anti-Goat IgG Antibody Phycoerythrin Conjugated. Antigen: Goat IgG. Load: Lane 1 - 100 ng Lane 2 - 33.3 ng Lane 3 - 11.1 ng Lane 4 - 3.70 ng Lane 5 - 1.23 ng. Primary antibody: none. Secondary antibody: Donkey anti-Goat IgG Antibody Phycoerythrin Conjugated at 1:1,000 for 60 min at RT. Block: ABIN925618 for 1 HR at RT.



Western Blotting

Image 2. Western blot of Phycoerythrin conjugated Donkey Anti-Goat IgG Secondary antibody. Lane 1: Goat IgG. Lane 2: None. Load: 50 ng per lane. Primary antibody: None. Secondary antibody: Phycoerythrin donkey secondary antibody at 1:1,000 for 60 min at RT. Blocking: ABIN925618 for 30 min at RT. Predicted/Observed size: 25 & 55 kDa, 25 & 55 kDa for Goat IgG. Other band(s): None.