

Datasheet for ABIN964944

## Mouse anti-Human IgG (Heavy & Light Chain) Antibody - Preadsorbed

[Go to Product page](#)

### 1 Image

#### Overview

Quantity:	1 mg
Target:	IgG
Binding Specificity:	Heavy & Light Chain
Reactivity:	Human
Host:	Mouse
Clonality:	Polyclonal
Application:	ELISA, Immunohistochemistry (IHC), Western Blotting (WB)

#### Product Details

Immunogen:	Immunogen: Human IgG whole molecule
Isotype:	IgG
Specificity:	Assay by immunoelectrophoresis resulted in a single precipitin arc against anti-Mouse Serum, Human IgG and Human Serum.
Cross-Reactivity:	Human
Purification:	Preadsorption: Solid phase absorption
Sterility:	Sterile filtered

#### Target Details

Target:	IgG
Abstract:	<a href="#">IgG Products</a>

## Target Details

---

Target Type: Antibody

---

Background: Synonyms: Mouse Anti-Human IgG Antibody, Mouse Anti Human IgG Antibody  
Background: Anti-Human IgG (H&L) generated in mouse detects human Immunoglobulin G (IgG), both heavy and light chains of the antibody molecule are present. It is a protein complex composed of four peptide chains - two identical heavy chains and two identical light chains arranged in a Y-shape typical of antibody monomers. Each IgG has two antigen binding sites. Representing approximately 75 % of serum immunoglobulins in humans, IgG is the most abundant antibody isotype found in the circulation. IgG molecules are synthesized and secreted by plasma B cells. Secondary Antibodies are available in a variety of formats and conjugate types. When choosing a secondary antibody product, consideration must be given to species and immunoglobulin specificity, conjugate type, fragment and chain specificity, level of cross-reactivity, and host-species source and fragment composition.

## Application Details

---

Application Notes: Immunohistochemistry Dilution: 1:1,000 - 1:5,000  
Application Note: Mouse Anti-Human IgG (H&L) is suitable for use in immunoelectrophoresis, western-blot, competitive western-blot, ELISA and competitive ELISA assays. Specific conditions for reactivity and signal detection should be optimized by the end user.  
ELISA Dilution: 1:5,000 - 1:50,000  
Western Blot Dilution: 1:500 - 1:5,000

---

Restrictions: For Research Use only

---

## Handling

---

Format: Liquid

---

Concentration: 1.0 mg/mL

---

Buffer: Buffer: 0.02 M Potassium Phosphate, 0.15 M Sodium Chloride, pH 7.2  
Stabilizer: None  
Preservative: 0.01 % (w/v) Sodium Azide

---

Preservative: Sodium azide

---

Precaution of Use: This product contains Sodium azide: a POISONOUS AND HAZARDOUS SUBSTANCE which should be handled by trained staff only.

---

Storage: 4 °C, -20 °C

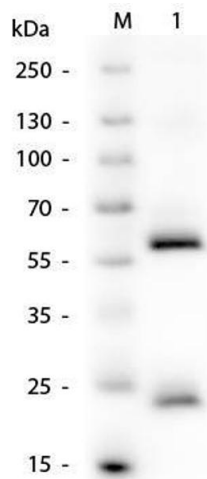
---

## Handling

Storage Comment: Store vial at 4 °C prior to restoration. For extended storage aliquot contents and freeze at -24 °C or below. This product is stable for several weeks at 4 °C as an undiluted liquid.

Expiry Date: 12 months

## Images



### Western Blotting

**Image 1.** Western Blot of Human IgG Antibody. M: 3  $\mu$ L Opal Prestained Ladder (MB-210-0500). Lane 1: Human IgG. Load: 50 ng per lane. Primary antibody: Human IgG Antibody at 1:1,000 overnight at 4°C. Secondary antibody: Peroxidase conjugated mouse secondary antibody at 1:40,000 for 30 minutes at RT. Block: ABIN925618 for 30 minutes at RT. Predicted/Observed size: 55 kDa, 25 kDa for Human IgG.