

Datasheet for ABIN964954

Goat anti-Mouse IgG (Heavy & Light Chain) Antibody (Atto 425) - Preadsorbed[Go to Product page](#)**3** Images

Overview

Quantity:	100 µg
Target:	IgG
Binding Specificity:	Heavy & Light Chain
Reactivity:	Mouse
Host:	Goat
Clonality:	Polyclonal
Conjugate:	Atto 425
Application:	Western Blotting (WB), FLISA, Fluorescence Microscopy (FM)

Product Details

Immunogen:	Immunogen: Mouse IgG whole molecule
Isotype:	IgG
Specificity:	Assay by immunoelectrophoresis resulted in a single precipitin arc against anti-Goat Serum, Rat IgG and Rat Serum.
Characteristics:	<p>Anti-Mouse IgG (H&L) conjugated by ATTO 425 is designed for STED microscopy, FRET, immunofluorescence microscopy, fluorescence based plate assays (FLISA) and fluorescent western blotting. This product is also suitable for multiplex analysis, including multicolor imaging, utilizing various commercial platforms.</p> <p>This product is designed for STED microscopy, FRET, immunofluorescence microscopy, fluorescence based plate assays (FLISA) and fluorescent western blotting. This product is also suitable for multiplex analysis, including multicolor imaging, utilizing various commercial</p>

Product Details

platforms.

Purification: Preadsorption: Solid phase absorption

Labeling Ratio: 2.3

Target Details

Target: IgG

Abstract: [IgG Products](#)

Target Type: Antibody

Background: Synonyms: Goat Anti-Mouse IgG Antibody ATTO425 Conjugation, Goat Anti-Mouse IgG ATTO 425 Conjugated Antibody

Background: Anti-Mouse IgG ATTO 425 Antibody generated in goat detects reactivity to Mouse IgG. Secreted as part of the adaptive immune response by plasma B cells, immunoglobulin G constitutes 75 % of serum immunoglobulins. Immunoglobulin G binds to viruses, bacteria, as well as fungi and facilitates their destruction or neutralization via agglutination (and thereby immobilizing them), activation of the complement cascade, and opsonization for phagocytosis. The whole IgG molecule possesses both the F(c) region, recognized by high-affinity Fc receptor proteins, as well as the F(ab) region possessing the epitope-recognition site. Both the Heavy and Light chains of the antibody molecule are present. Secondary Antibodies are available in a variety of formats and conjugate types. When choosing a secondary antibody product, consideration must be given to species and immunoglobulin specificity, conjugate type, fragment and chain specificity, level of cross-reactivity, and host-species source and fragment composition.

Application Details

Application Notes: Application Note: Anti-Mouse IgG (H&L) conjugated by ATTO 425 is designed for STED microscopy, FRET, immunofluorescence microscopy, fluorescence based plate assays (FLISA) and fluorescent western blotting. This product is also suitable for multiplex analysis, including multicolor imaging, utilizing various commercial platforms. The emission spectra for this ATTO conjugate matches the principle output wavelengths of most common fluorescence instrumentation.

FLISA Dilution: >1:20,000

Western Blot Dilution: >1:10,000

IF Microscopy Dilution: >1:5,000

Application Details

Comment:	The emission spectra for this ATTO conjugate matches the principle output wavelengths of most common fluorescence instrumentation.
----------	--

Restrictions:	For Research Use only
---------------	-----------------------

Handling

Format:	Lyophilized
---------	-------------

Reconstitution:	Reconstitution Volume: 500 µL Reconstitution Buffer: Restore with deionized water (or equivalent)
-----------------	--

Concentration:	1.0 mg/mL
----------------	-----------

Buffer:	Buffer: 0.02 M Potassium Phosphate, 0.15 M Sodium Chloride, pH 7.2 Stabilizer: 10 mg/mL Bovine Serum Albumin (BSA) - Immunoglobulin and Protease free Preservative: 0.01 % (w/v) Sodium Azide
---------	---

Preservative:	Sodium azide
---------------	--------------

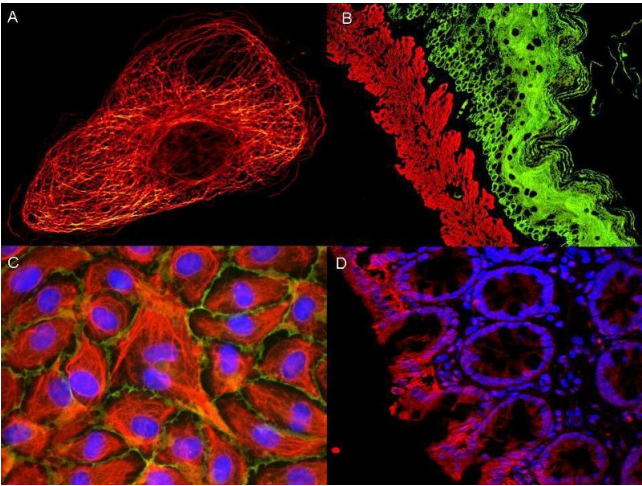
Precaution of Use:	This product contains Sodium azide: a POISONOUS AND HAZARDOUS SUBSTANCE which should be handled by trained staff only.
--------------------	--

Handling Advice:	Avoid cycles of freezing and thawing. This vial contains a relatively low volume of reagent (25 µL). To minimize loss of volume dilute 1:10 by adding 225 µL of the buffer stated above directly to the vial. Recap, mix thoroughly and briefly centrifuge to collect the volume at the bottom of the vial. Use this intermediate dilution when calculating final dilutions as recommended below. Product is photosensitive and should be protected from light.
------------------	---

Storage:	RT, 4 °C, -20 °C
----------	------------------

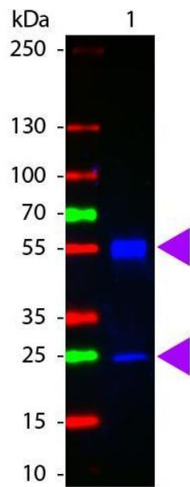
Storage Comment:	Store vial at -20 °C or below prior to opening. Store the vial at -20 °C or below after dilution.
------------------	---

Expiry Date:	12 months
--------------	-----------



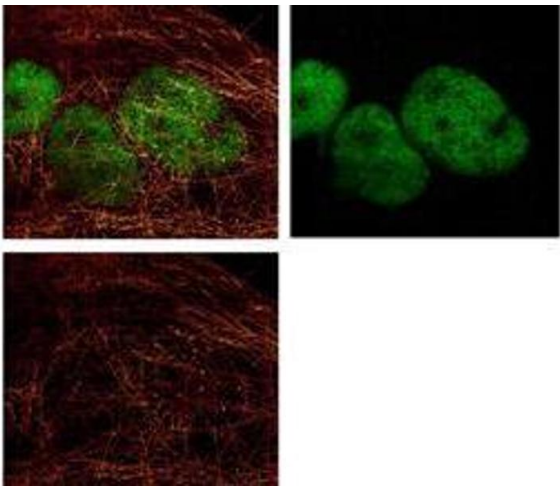
Immunofluorescence

Image 1.



Western Blotting

Image 2. Western Blot of ATTO 425 conjugated Goat anti-Mouse IgG antibody. Lane 1: Mouse IgG. Lane 2: none. Load: 50 ng per lane. Primary antibody: none. Secondary antibody: ATTO 425 mouse secondary antibody at 1:1,000 for 60 min at RT. Block: ABIN925618 for 30 min RT. Predicted/Observed size: 55 kDa, 28 kDa for Mouse IgG. Other band(s): none.



Immunofluorescence

Image 3.