



Datasheet for ABIN964957

Goat anti-Mouse IgG (Heavy & Light Chain) Antibody (Atto 488) - Preadsorbed



[Go to Product page](#)

2 Images

Overview

Quantity:	100 µg
Target:	IgG
Binding Specificity:	Heavy & Light Chain
Reactivity:	Mouse
Host:	Goat
Clonality:	Polyclonal
Conjugate:	Atto 488
Application:	Western Blotting (WB), FLISA, Fluorescence Microscopy (FM)

Product Details

Immunogen:	Immunogen: Mouse IgG whole molecule
Isotype:	IgG
Specificity:	Assay by immunoelectrophoresis resulted in a single precipitin arc against anti-Goat Serum, Mouse IgG and Mouse Serum.
Characteristics:	<p>Anti-Mouse IgG (H&L) conjugated by ATTO 488 is designed for STED microscopy, FRET, immunofluorescence microscopy, fluorescence based plate assays (FLISA) and fluorescent western blotting. This product is also suitable for multiplex analysis, including multicolor imaging, utilizing various commercial platforms.</p> <p>This product is designed for STED microscopy, FRET, immunofluorescence microscopy, fluorescence based plate assays (FLISA) and fluorescent western blotting. This product is also suitable for multiplex analysis, including multicolor imaging, utilizing various commercial</p>

Product Details

platforms.

Purification: Preadsorption: Solid phase absorption

Sterility: Sterile filtered

Labeling Ratio: 3.0

Target Details

Target: IgG

Abstract: [IgG Products](#)

Target Type: Antibody

Background: Synonyms: Goat Anti-Mouse IgG Antibody ATTO488 Conjugation, Goat Anti-Mouse IgG ATTO 488 Conjugated Antibody

Background: Anti-Mouse IgG ATTO 488 Antibody generated in goat detects reactivity to Mouse IgG. Secreted as part of the adaptive immune response by plasma B cells, immunoglobulin G constitutes 75 % of serum immunoglobulins. Immunoglobulin G binds to viruses, bacteria, as well as fungi and facilitates their destruction or neutralization via agglutination (and thereby immobilizing them), activation of the compliment cascade, and opsinization for phagocytosis. The whole IgG molecule possesses both the F(c) region, recognized by high-affinity Fc receptor proteins, as well as the F(ab) region possessing the epitope-recognition site. Both the Heavy and Light chains of the antibody molecule are present. Secondary Antibodies are available in a variety of formats and conjugate types. When choosing a secondary antibody product, consideration must be given to species and immunoglobulin specificity, conjugate type, fragment and chain specificity, level of cross-reactivity, and host-species source and fragment composition.

Application Details

Application Notes: Application Note: Anti-Mouse IgG (H&L) conjugated by ATTO 488 is designed for STED microscopy, FRET, immunofluorescence microscopy, fluorescence based plate assays (FLISA) and fluorescent western blotting. This product is also suitable for multiplex analysis, including multicolor imaging, utilizing various commercial platforms. The emission spectra for this ATTO conjugate matches the principle output wavelengths of most common fluorescence instrumentation.

FLISA Dilution: >1:20,000

Western Blot Dilution: >1:10,000

Application Details

IF Microscopy Dilution: >1:5,000

Comment: The emission spectra for this ATTO conjugate matches the principle output wavelengths of most common fluorescence instrumentation.

Restrictions: For Research Use only

Handling

Format: Lyophilized

Reconstitution: Reconstitution Volume: 500 μ L
Reconstitution Buffer: Restore with deionized water (or equivalent)

Concentration: 1.0 mg/mL

Buffer: Buffer: 0.02 M Potassium Phosphate, 0.15 M Sodium Chloride, pH 7.2
Stabilizer: 10 mg/mL Bovine Serum Albumin (BSA) - Immunoglobulin and Protease free
Preservative: 0.01 % (w/v) Sodium Azide

Preservative: Sodium azide

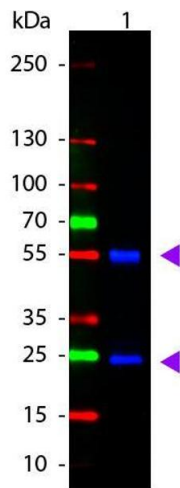
Precaution of Use: This product contains Sodium azide: a POISONOUS AND HAZARDOUS SUBSTANCE which should be handled by trained staff only.

Handling Advice: Avoid cycles of freezing and thawing.
Product is photosensitive and should be protected from light.

Storage: RT, 4 °C, -20 °C

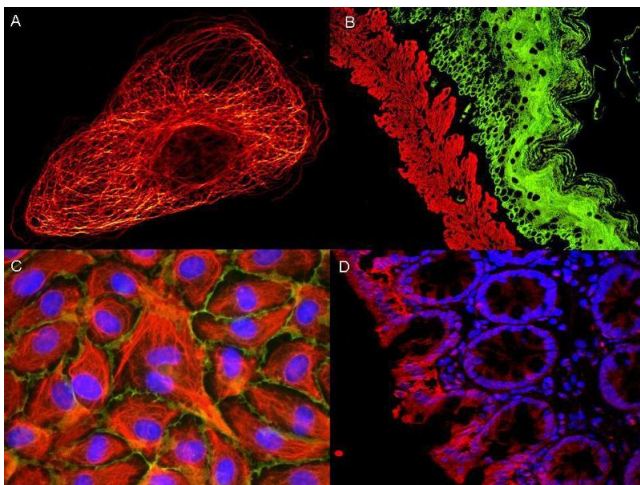
Storage Comment: Store vial at -20 °C prior to opening. Aliquot contents and freeze at -20 °C or below for extended storage. This product is stable for several weeks at 0 °C as an undiluted liquid.

Expiry Date: 12 months



Western Blotting

Image 1. Western Blot of ATTO 488 conjugated Goat anti-Mouse IgG Pre-adsorbed secondary antibody. Lane 1: Mouse IgG. Lane 2: none. Load: 50 ng per lane. Primary antibody: none. Secondary antibody: ATTO 488 goat secondary antibody at 1:1,000 for 60 min at RT. Block: ABIN925618 for 30 min at RT. Predicted/Observed size: 25 & 55 kDa, 25 & 55 kDa for Mouse IgG. Other band(s): none.



Immunofluorescence

Image 2.