



Datasheet for ABIN964975

Goat anti-Rabbit IgG (Heavy & Light Chain) Antibody (TRITC) - Preadsorbed



[Go to Product page](#)

3 Images

Overview

Quantity:	500 µg
Target:	IgG
Binding Specificity:	Heavy & Light Chain
Reactivity:	Rabbit
Host:	Goat
Clonality:	Polyclonal
Conjugate:	TRITC
Application:	Flow Cytometry (FACS), FLISA, Fluorescence Microscopy (FM)

Product Details

Immunogen:	Immunogen: Rabbit IgG whole molecule
Isotype:	IgG
Specificity:	IgG (H&L)
Cross-Reactivity:	Rabbit
Characteristics:	Concentration Definition: by UV absorbance at 280 nm Label Description: Rhodamine (TRITC). Color: Red. Label MW: 44. F/P Ratio: 2.5 moles TRITC per mole of Goat IgG. Conjugation Chemistry: Isothiocyanate.

Product Details

Excitation Wavelength: 550.

Emission Wavelength: 570.

Purification: Preadsorption: immunoaffinity chromatography using Rabbit IgG coupled to agarose

Labeling Ratio: 3.1

Target Details

Target: IgG

Abstract: [IgG Products](#)

Target Type: Antibody

Background: Synonyms: Goat anti-Rabbit IgG Antibody Rhodamine Conjugation, Goat anti-Rabbit IgG Rhodamine Conjugated Antibody

Background: Anti-Rabbit IgG Antibody Rhodamine generated in goat detects rabbit IgG. Secreted as part of the adaptive immune response by plasma B cells, immunoglobulin G constitutes 75 % of serum immunoglobulins. Immunoglobulin G binds to viruses, bacteria, as well as fungi and facilitates their destruction or neutralization via agglutination (and thereby immobilizing them), activation of the complement cascade, and opsinization for phagocytosis. The whole IgG molecule possesses both the F(c) region, recognized by high-affinity Fc receptor proteins, as well as the F(ab) region possessing the epitope-recognition site. Both heavy and light chains of the antibody molecule are present. Secondary Antibodies are available in a variety of formats and conjugate types. When choosing a secondary antibody product, consideration must be given to species and immunoglobulin specificity, conjugate type, fragment and chain specificity, level of cross-reactivity, and host-species source and fragment composition. This Anti-Rabbit IgG (H&L) is conjugated to Rhodamine.

Application Details

Application Notes: Application Note: This product is designed for immunofluorescence microscopy, fluorescence based plate assays (FLISA) and fluorescent western blotting. This product is also suitable for multiplex analysis, including multicolor imaging, utilizing various commercial platforms.

FLISA Dilution: 1:10,000 - 1:50,000

Flow Cytometry Dilution: 1:500 - 1:2,500

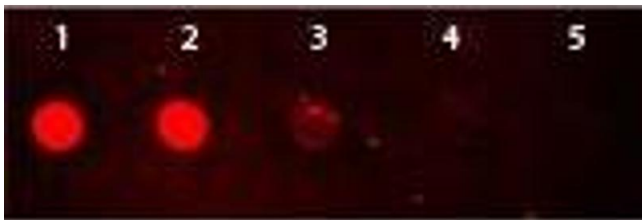
IF Microscopy Dilution: 1:1,000 - 1:5,000

Restrictions: For Research Use only

Handling

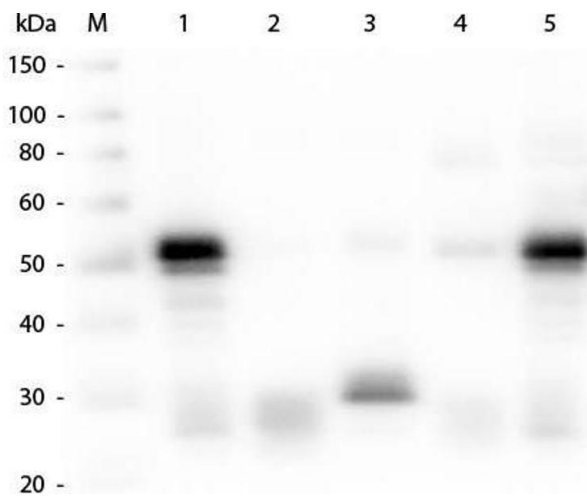
Format:	Lyophilized
Reconstitution:	Reconstitution Volume: 1.0 mL Reconstitution Buffer: Restore with deionized water (or equivalent)
Concentration:	2.0 mg/mL
Buffer:	Buffer: 0.02 M Potassium Phosphate, 0.15 M Sodium Chloride, pH 7.2 Stabilizer: 10 mg/mL Bovine Serum Albumin (BSA) - Immunoglobulin and Protease free Preservative: 0.01 % (w/v) Sodium Azide
Preservative:	Sodium azide
Precaution of Use:	This product contains Sodium azide: a POISONOUS AND HAZARDOUS SUBSTANCE which should be handled by trained staff only.
Handling Advice:	Product is photosensitive and should be protected from light.
Storage:	RT, 4 °C, -20 °C
Expiry Date:	12 months

Images



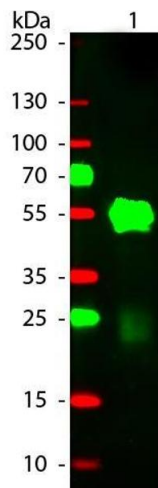
Dot Blot

Image 1. Dot Blot of Rhodamine Conjugated Goat-anti-Rabbit IgG. Antigen: Rabbit IgG. Load: Lane 1 - 50ng Lane 2 - 16.67ng Lane 3 - 5.56ng Lane 4 - 1.85ng Lane 5 - 0.62ng. Primary antibody: none. Secondary antibody: Rhodamine Conjugated Goat-a-Rabbit IgG secondary antibody at 1:1,000 for 60 min at RT. Block: ABIN925618 for 60 min at RT.



Western Blotting

Image 2. Western Blot of Anti-Rabbit IgG (H&L) (GOAT) Antibody . Lane M: 3 µl Molecular Ladder. Lane 1: Rabbit IgG whole molecule . Lane 2: Rabbit IgG F(ab) Fragment . Lane 3: Rabbit IgG F(c) Fragment . Lane 4: Rabbit IgM Whole Molecule . Lane 5: Normal Rabbit Serum . All samples were reduced. Load: 50 ng per lane. Block: ABIN925618 for 30 min at RT. Primary Antibody: Anti-Rabbit IgG (H&L) (GOAT) Antibody 1:1,000 for 60 min at RT. Secondary antibody: Anti-Goat IgG (DONKEY) Peroxidase Conjugated Antibody 1:40,000 in ABIN925618 for 30 min at RT. Predicted/Observed Size: 25 and 50 kDa for Rabbit IgG and Serum, 25 kDa for F(c) and F(ab), 70 and 23 kDa for IgM. Rabbit F(c) migrates slightly higher.



Western Blotting

Image 3. Western Blot of Goat anti-Rabbit IgG Rhodamine Conjugated Secondary Antibody. Lane 1: Rabbit IgG. Lane 2: None. Load: 50 ng per lane. Primary antibody: None. Secondary antibody: Rhodamine goat secondary antibody at 1:1,000 for 60 min at RT. Block: ABIN925618 for 30 min at RT. Predicted/Observed size: 25 & 55 kDa, 25 & 55 kDa for Rabbit IgG. Other band(s): None.