

Datasheet for ABIN964979

Goat anti-Rabbit IgG (Heavy & Light Chain) Antibody (Atto 425) - Preadsorbed

[Go to Product page](#)**3** Images**1** Publication

Overview

Quantity:	500 µg
Target:	IgG
Binding Specificity:	Heavy & Light Chain
Reactivity:	Rabbit
Host:	Goat
Clonality:	Polyclonal
Conjugate:	Atto 425
Application:	Western Blotting (WB), FLISA, Fluorescence Microscopy (FM), Dot Blot (DB)

Product Details

Purpose:	Rabbit IgG (H&L) Antibody ATTO 425 Conjugated Pre-Adsorbed
Immunogen:	Optional[Immunogen]: Rabbit IgG whole molecule
Isotype:	IgG
Cross-Reactivity (Details):	Minimal crossreactivity against Bv Ch Gt GP Ham Hs Hu Ms Rt & Sh Serum Proteins Assay by immunoelectrophoresis resulted in a single precipitin arc against anti-Goat Serum, Rabbit IgG and Rabbit Serum. No reaction was observed against Bovine, Chicken, Goat, Guinea Pig, Hamster, Horse, Human, Mouse, Rat and Sheep Serum Proteins. This antibody will react with heavy chains of rabbit IgG and with light chains of most rabbit immunoglobulins.
Characteristics:	Anti-Rabbit IgG F(ab') ₂ Antibody generated in goat recognizes the dimeric Fab portion of the rabbit IgG molecule. Rabbit IgG F(ab') ₂ is a proteolytic fragment of immunoglobulin G (IgG) obtained by limited digestion with the enzyme pepsin under controlled conditions of

Product Details

temperature, time and pH. F(ab')₂ Molecules lack the Fc portion of IgG and therefore receptors that bind rabbit IgG F(c) will not bind rabbit IgG F(ab')₂ Molecules. Secondary Antibodies are available in a variety of formats and conjugate types. When choosing a secondary antibody product, consideration must be given to species and immunoglobulin specificity, conjugate type, fragment and chain specificity, level of cross-reactivity, and host-species source and fragment composition.

Purification: Rabbit IgG (H&L) Antibody ATTO 425 was prepared from monospecific antiserum by immunoaffinity chromatography using Rabbit IgG coupled to agarose beads followed by solid phase adsorption(s) to remove any unwanted reactivities.

Target Details

Target: IgG

Abstract: [IgG Products](#)

Target Type: Antibody

Background: Secreted as part of the adaptive immune response by plasma B cells, immunoglobulin G constitutes 75 % of serum immunoglobulins. Immunoglobulin G binds to viruses, bacteria, as well as fungi and facilitates their destruction or neutralization via agglutination (and thereby immobilizing them), activation of the complement cascade, and opsonization for phagocytosis. The whole IgG molecule possesses both the F(c) region, recognized by high-affinity Fc receptor proteins, as well as the F(ab) region possessing the epitope-recognition site. Both the Heavy and Light chains of the antibody molecule are present. Secondary Antibodies are available in a variety of formats and conjugate types. When choosing a secondary antibody product, consideration must be given to species and immunoglobulin specificity, conjugate type, fragment and chain specificity, level of cross-reactivity, and host-species source and fragment composition.

Application Details

Application Notes: Application Note: Anti-Rabbit IgG (H&L) conjugated to ATTO 425 has been tested by dot blot and western blot and is designed for STED microscopy, FRET, immunofluorescence microscopy, fluorescence based plate assays (FLISA) and fluorescent western blotting. This product is also suitable for multiplex analysis, including multicolor imaging, utilizing various commercial platforms. The emission spectra for this ATTO conjugate matches the principle output wavelengths of most common fluorescence instrumentation. Western Blot Dilution:

Application Details

>1:10,000 FLISA Dilution: >1:20,000 IF Microscopy Dilution: >1:5,000 Other: User Optimized

Restrictions: For Research Use only

Handling

Format: Lyophilized

Reconstitution: Reconstitution Buffer: Restore with deionized water (or equivalent), Reconstitution Volume: 500 μ L

Concentration: 1.0 mg/mL

Buffer: Buffer: 0.02 M Potassium Phosphate, 0.15 M Sodium Chloride, pH 7.2
Stabilizer: 10 mg/mL Bovine Serum Albumin (BSA) - Immunoglobulin and Protease free
, Preservative: 0.01 % (w/v) Sodium Azide

Preservative: Sodium azide

Precaution of Use: This product contains Sodium azide: a POISONOUS AND HAZARDOUS SUBSTANCE which should be handled by trained staff only.

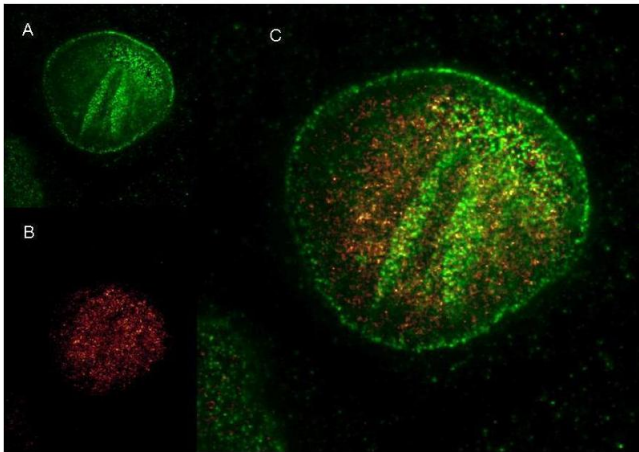
Storage: 4 °C, -20 °C

Storage Comment: Store vial at 4° C prior to restoration. For extended storage aliquot contents and freeze at -20° C or below. Avoid cycles of freezing and thawing. Centrifuge product if not completely clear after standing at room temperature. This product is stable for several weeks at 4° C as an undiluted liquid. Dilute only prior to immediate use.

Expiry Date: 12 months

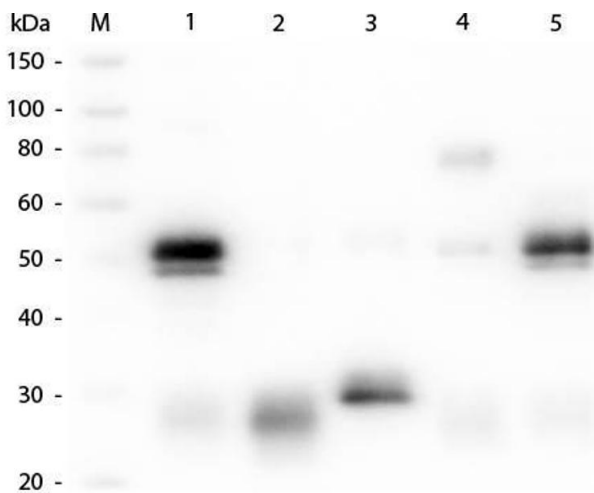
Publications

Product cited in: Henderson, Le Marchand, Hruska, Hippenmeyer, Luo, Dalva: "Ephrin-B3 controls excitatory synapse density through cell-cell competition for EphBs." in: **eLife**, Vol. 8, (2019) ([PubMed](#)).



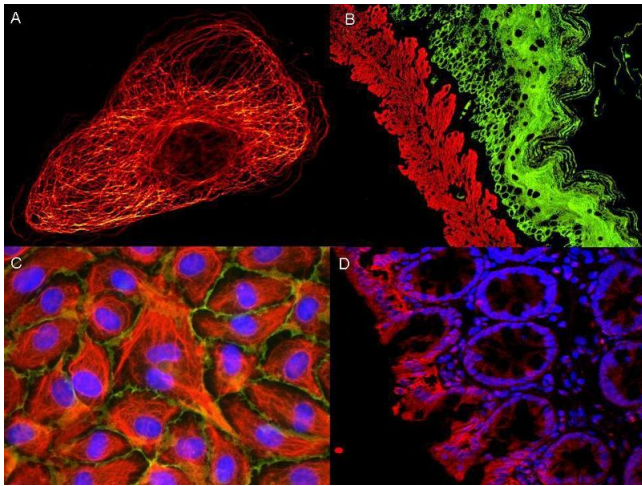
Immunofluorescence

Image 1.



Western Blotting

Image 2. Western Blot of Anti-Rabbit IgG (H&L) (GOAT) Antibody (Min X Bv, Ch, Gt, GP, Ham, Hs, Hu, Ms, Rt & Sh Serum Proteins) . Lane M: 3 μ l Molecular Ladder. Lane 1: Rabbit IgG whole molecule . Lane 2: Rabbit IgG F(ab) Fragment . Lane 3: Rabbit IgG F(c) Fragment . Lane 4: Rabbit IgM Whole Molecule . Lane 5: Normal Rabbit Serum . All samples were reduced. Load: 50 ng per lane. Block: ABIN925618 for 30 min at RT. Primary Antibody: Anti-Rabbit IgG (H&L) (GOAT) Antibody (Min X Bv, Ch, Gt, GP, Ham, Hs, Hu, Ms, Rt & Sh Serum Proteins) 1:1,000 for 60 min at RT. Secondary antibody: Anti-Goat IgG (DONKEY) Peroxidase Conjugated Antibody 1:40,000 in ABIN925618 for 30 min at RT. Predicted/Obsevered Size: 25 and 50 kDa for Rabbit IgG and Serum, 25 kDa for F(c) and F(ab), 70 and 23 kDa for IgM. Rabbit F(c) migrates slightly higher.



Immunofluorescence

Image 3.