



Datasheet for ABIN964997

## Goat anti-Rat IgG (Heavy & Light Chain) Antibody (Atto 425) - Preadsorbed



[Go to Product page](#)

### 2 Images

#### Overview

Quantity:	100 µg
Target:	IgG
Binding Specificity:	Heavy & Light Chain
Reactivity:	Rat
Host:	Goat
Clonality:	Polyclonal
Conjugate:	Atto 425
Application:	Western Blotting (WB), FLISA, Fluorescence Microscopy (FM)

#### Product Details

Immunogen:	Immunogen: Rat IgG whole molecule
Isotype:	IgG
Specificity:	Assay by immunoelectrophoresis resulted in a single precipitin arc against anti-Goat Serum, Rat IgG and Rat Serum.
Characteristics:	<p>Anti-Rat IgG (H&amp;L) conjugated to ATTO 425 is designed for STED microscopy, FRET, immunofluorescence microscopy, fluorescence based plate assays (FLISA) and fluorescent western blotting. This product is also suitable for multiplex analysis, including multicolor imaging, utilizing various commercial platforms.</p> <p>This product is designed for STED microscopy, FRET, immunofluorescence microscopy, fluorescence based plate assays (FLISA) and fluorescent western blotting. This product is also suitable for multiplex analysis, including multicolor imaging, utilizing various commercial</p>

## Product Details

---

platforms.

Purification: Preadsorption: Solid phase absorption

Sterility: Sterile filtered

Labeling Ratio: 2.5

## Target Details

---

Target: IgG

Abstract: [IgG Products](#)

Target Type: Antibody

Background: Synonyms: Goat anti-Rat IgG ATTO425 Conjugated Antibody, Goat anti-Rat IgG Antibody ATTO 425 Conjugation

Background: Anti-Rat IgG (H&L) conjugated to ATTO 425 is designed for STED microscopy, FRET, immunofluorescence microscopy, fluorescence based plate assays (FLISA) and fluorescent western blotting. This product is also suitable for multiplex analysis, including multicolor imaging, utilizing various commercial platforms.

## Application Details

---

Application Notes: Application Note: The emission spectra for this ATTO conjugate matches the principle output wavelengths of most common fluorescence instrumentation.

FLISA Dilution: >1:20,000

Western Blot Dilution: >1:10,000

IF Microscopy Dilution: >1:5,000

Comment: The emission spectra for this ATTO conjugate matches the principle output wavelengths of most common fluorescence instrumentation.

Restrictions: For Research Use only

## Handling

---

Format: Lyophilized

Reconstitution: Reconstitution Volume: 500  $\mu$ L

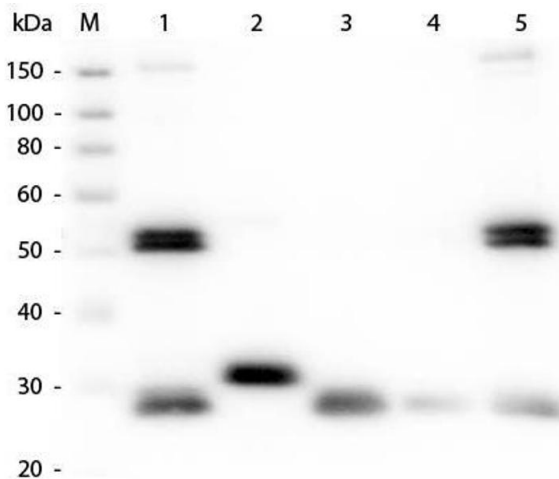
Reconstitution Buffer: Restore with deionized water (or equivalent)

Concentration: 1.0 mg/mL

## Handling

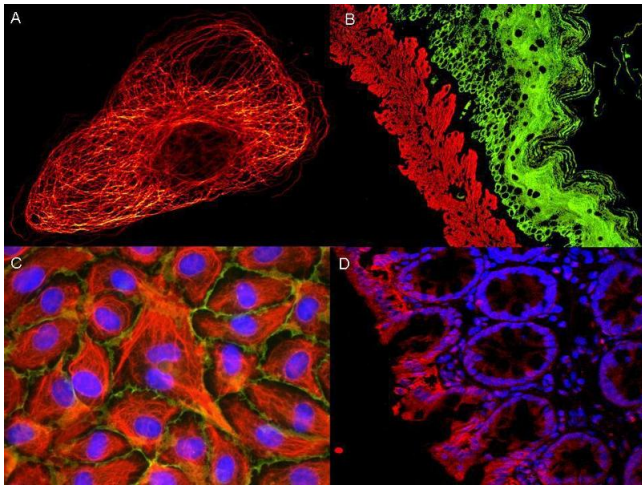
Buffer:	Buffer: 0.02 M Potassium Phosphate, 0.15 M Sodium Chloride, pH 7.2 Stabilizer: 10 mg/mL Bovine Serum Albumin (BSA) - Immunoglobulin and Protease free Preservative: 0.01 % (w/v) Sodium Azide
Preservative:	Sodium azide
Precaution of Use:	This product contains Sodium azide: a POISONOUS AND HAZARDOUS SUBSTANCE which should be handled by trained staff only.
Handling Advice:	Avoid cycles of freezing and thawing. This vial contains a relatively low volume of reagent (25 µL). To minimize loss of volume dilute 1:10 by adding 225 µL of the buffer stated above directly to the vial. Recap, mix thoroughly and briefly centrifuge to collect the volume at the bottom of the vial. Use this intermediate dilution when calculating final dilutions as recommended below. Product is photosensitive and should be protected from light.
Storage:	RT, 4 °C, -20 °C
Storage Comment:	Store vial at -20 °C or below prior to opening. Store the vial at -20 °C or below after dilution.
Expiry Date:	12 months

## Validation report #103828 for ELISA (ELISA)



### Western Blotting

**Image 1.** Western Blot of Anti-Rat IgG (H&L) (GOAT) Antibody (Min X Bv Ch Gt GP Ham Hs Hu Ms Rb & Sh Serum Proteins) . Lane M: 3 µl Molecular Ladder. Lane 1: Rat IgG whole molecule . Lane 2: Rat IgG F(c) Fragment . Lane 3: Rat IgG Fab Fragment . Lane 4: Rat IgM Whole Molecule . Lane 5: Rat Serum . All samples were reduced. Load: 50 ng per lane. Block: ABIN925618 for 30 min at RT. Primary Antibody: Anti-Rat IgG (H&L) (GOAT) Antibody (Min X Bv Ch Gt GP Ham Hs Hu Ms Rb & Sh Serum Proteins) 1:1,000 for 60 min at RT. Secondary Antibody: Anti-Goat IgG (DONKEY) Peroxidase Conjugated Antibody 1:40,000 in ABIN925618 for 30 min at RT. Predicted/Observed Size: 25 and 55 kDa for Rat IgG and Serum, 25 kDa for F(c) and Fab, 78 and 25 kDa for IgM. Rat F(c) migrates slightly higher.



## Immunofluorescence

Image 2.