

Datasheet for ABIN965003

## Goat anti-Rat IgG (Heavy & Light Chain) Antibody (Atto 550) - Preadsorbed



[Go to Product page](#)

### 3 Images

#### Overview

Quantity:	100 µg
Target:	IgG
Binding Specificity:	Heavy & Light Chain
Reactivity:	Rat
Host:	Goat
Clonality:	Polyclonal
Conjugate:	Atto 550
Application:	Western Blotting (WB), FLISA, Fluorescence Microscopy (FM)

#### Product Details

Purpose:	Rat IgG (H&L) Antibody ATTO 550 Conjugated Pre-Adsorbed
Immunogen:	Optional[Immunogen]: Rat IgG whole molecule
Isotype:	IgG
Cross-Reactivity (Details):	Minimal crossreactivity against Bv Ch Gt GP Ham Hs Hu Ms Rb & Sh Serum Proteins Assay by immunoelectrophoresis resulted in a single precipitin arc against anti-Goat Serum, Rat IgG and Rat Serum. No reaction was observed against Bovine, Chicken, Goat, Guinea Pig, Hamster, Horse, Human, Mouse, Rabbit and Sheep Serum Proteins. This antibody will react with heavy chains of rat IgG and with light chains of most rat immunoglobulins.
Characteristics:	Anti-Rat IgG (H&L) conjugated to ATTO 532 is designed for STED microscopy, FRET, immunofluorescence microscopy, fluorescence based plate assays (FLISA) and fluorescent western blotting. This product is also suitable for multiplex analysis, including multicolor

## Product Details

---

imaging, utilizing various commercial platforms.

**Purification:** Rat IgG (H&L) Antibody ATTO 550 was prepared from monospecific antiserum by immunoaffinity chromatography using Rat IgG coupled to agarose beads followed by solid phase adsorption(s) to remove any unwanted reactivities.

## Target Details

---

**Target:** IgG

**Abstract:** [IgG Products](#)

**Target Type:** Antibody

**Background:** Anti-Rat IgG (H&L) conjugated to ATTO 550 is designed for STED microscopy, FRET, immunofluorescence microscopy, fluorescence based plate assays (FLISA) and fluorescent western blotting. This product is also suitable for multiplex analysis, including multicolor imaging, utilizing various commercial platforms.

## Application Details

---

**Application Notes:** Application Note: Anti-Rat IgG (H&L) conjugated to ATTO 550 has been tested by western blot and is designed for STED microscopy, FRET, immunofluorescence microscopy, fluorescence based plate assays (FLISA) and fluorescent western blotting. The emission spectra for this ATTO conjugate matches the principle output wavelengths of most common fluorescence instrumentation. Western Blot Dilution: >1:10,000 FLISA Dilution: >1:20,000 IF Microscopy Dilution: >1:5,000 Other: User Optimized

**Restrictions:** For Research Use only

## Handling

---

**Format:** Lyophilized

**Reconstitution:** Reconstitution Buffer: Restore with deionized water (or equivalent), Reconstitution Volume: 500  $\mu$ L

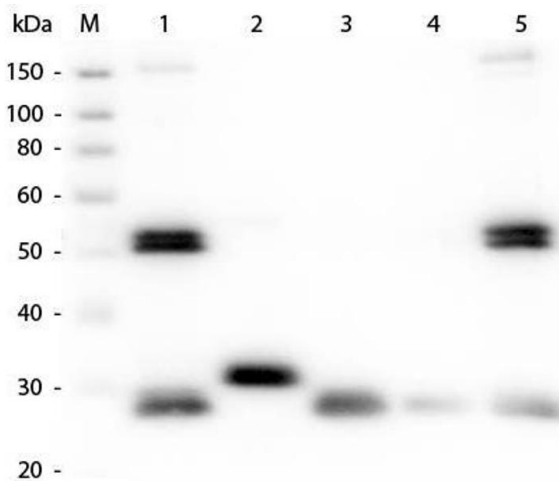
**Concentration:** 1.0 mg/mL

**Buffer:** Buffer: 0.02 M Potassium Phosphate, 0.15 M Sodium Chloride, pH 7.2  
Stabilizer: 10 mg/mL Bovine Serum Albumin (BSA) - Immunoglobulin and Protease free  
, Preservative: 0.01 % (w/v) Sodium Azide

## Handling

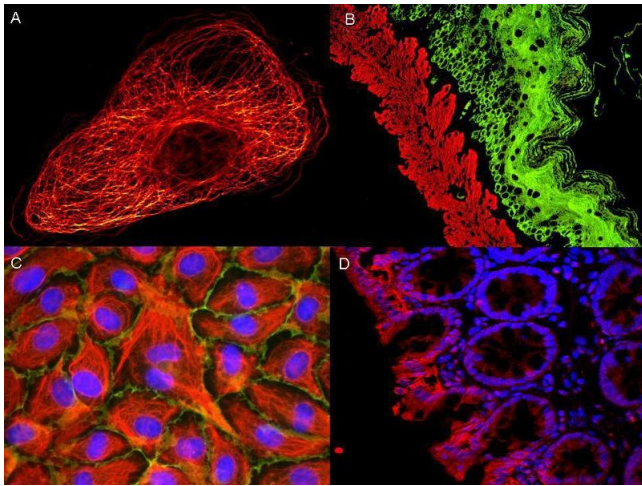
Preservative:	Sodium azide
Precaution of Use:	This product contains Sodium azide: a POISONOUS AND HAZARDOUS SUBSTANCE which should be handled by trained staff only.
Storage:	4 °C,-20 °C
Storage Comment:	Store vial at 4° C prior to restoration. For extended storage aliquot contents and freeze at -20° C or below. Avoid cycles of freezing and thawing. Centrifuge product if not completely clear after standing at room temperature. This product is stable for several weeks at 4° C as an undiluted liquid. Dilute only prior to immediate use.
Expiry Date:	12 months

## Images



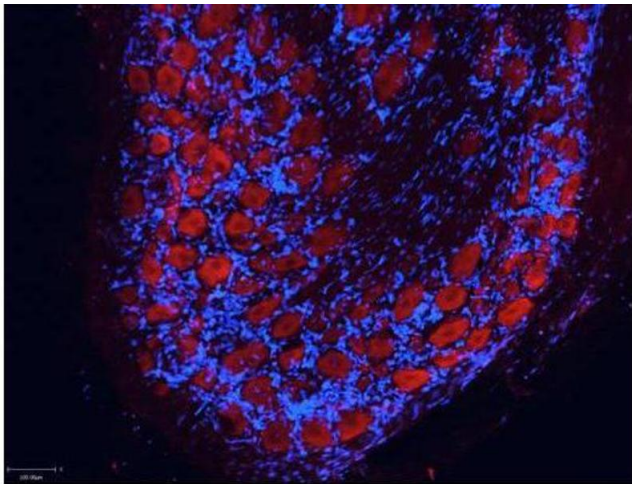
### Western Blotting

**Image 1.** Western Blot of Anti-Rat IgG (H&L) (GOAT) Antibody (Min X Bv Ch Gt GP Ham Hs Hu Ms Rb & Sh Serum Proteins) . Lane M: 3 µl Molecular Ladder. Lane 1: Rat IgG whole molecule . Lane 2: Rat IgG F(c) Fragment . Lane 3: Rat IgG Fab Fragment . Lane 4: Rat IgM Whole Molecule . Lane 5: Rat Serum . All samples were reduced. Load: 50 ng per lane. Block: ABIN925618 for 30 min at RT. Primary Antibody: Anti-Rat IgG (H&L) (GOAT) Antibody (Min X Bv Ch Gt GP Ham Hs Hu Ms Rb & Sh Serum Proteins) 1:1,000 for 60 min at RT. Secondary Antibody: Anti-Goat IgG (DONKEY) Peroxidase Conjugated Antibody 1:40,000 in ABIN925618 for 30 min at RT. Predicted/Observed Size: 25 and 55 kDa for Rat IgG and Serum, 25 kDa for F(c) and Fab, 78 and 25 kDa for IgM. Rat F(c) migrates slightly higher.



**Immunofluorescence**

**Image 2.**



**Immunofluorescence**

**Image 3.**