

Datasheet for ABIN965099

Goat anti-Human IgG (Fc Region) Antibody (FITC) - Preadsorbed

[Go to Product page](#)

1 Image

Overview

Quantity:	1 mg
Target:	IgG
Binding Specificity:	Fc Region
Reactivity:	Human
Host:	Goat
Clonality:	Polyclonal
Conjugate:	FITC
Application:	Flow Cytometry (FACS), FLISA, Fluorescence Microscopy (FM)

Product Details

Immunogen:	Immunogen: Human IgG F(c) fragment
Isotype:	IgG
Fragment:	F(ab') ₂ fragment
Specificity:	Assay by immunoelectrophoresis resulted in a single precipitin arc against anti-Fluorescein, anti-Goat Serum, Human IgG, Human IgG F(c) and Human Serum.
Characteristics:	This product is designed for immunofluorescence microscopy, fluorescence based plate assays (FLISA) and fluorescent western blotting. This product is also suitable for multiplex analysis, including multicolor imaging, utilizing various commercial platforms.
Purification:	Preadsorption: Solid phase absorption
Labeling Ratio:	5.6

Target Details

Target:	IgG
Abstract:	IgG Products
Target Type:	Antibody
Background:	<p>Synonyms: Goat F(ab')₂ Anti-Human IgG F(c) Fluorescein Conjugated Pre-Adsorbed Antibody, Goat Fab₂ Anti-Human IgG Fc Fragment Fluorescein Conjugated Antibody, Goat F(ab')₂ Anti-Human IgG F(c) Fragment Antibody FITC Conjugated</p> <p>Background: F(ab')₂ Anti-Human IgG F(c) Fluorescein Antibody generated in goat detects Human F(c). Representing approximately 75 % of serum immunoglobulins in humans, IgG is the most abundant antibody isotype found in the circulation. IgG molecules are synthesized and secreted by plasma B cells. Secondary Antibodies are available in a variety of formats and conjugate types. When choosing a secondary antibody product, consideration must be given to species and immunoglobulin specificity, conjugate type, fragment and chain specificity, level of cross-reactivity, and host-species source and fragment composition. F(c) Antibody is ideal for investigators who routinely perform flow cytometry, immunohistochemistry or IHC and other immunoassays.</p>

Application Details

Application Notes:	<p>Application Note: Suitable for immunomicroscopy and flow cytometry or FACS analysis as well as other antibody based fluorescent assays requiring extremely low background levels, absence of F(c) mediated binding, lot-to-lot consistency, high titer and specificity. This product is designed for immunofluorescence microscopy, fluorescence based plate assays (FLISA) and fluorescent western blotting. This product is also suitable for multiplex analysis, including multicolor imaging, utilizing various commercial platforms.</p> <p>FLISA Dilution: 1:10,000 - 1:50,000</p> <p>Flow Cytometry Dilution: 1:500 - 1:2,500</p> <p>IF Microscopy Dilution: 1:1,000 - 1:5,000</p>
Comment:	Excitation/Emission wavelength: 494 nm/514 nm
Restrictions:	For Research Use only

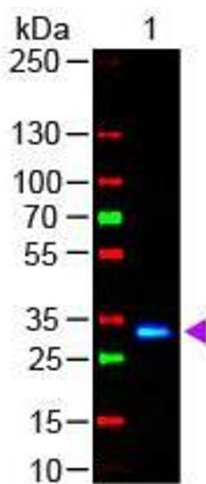
Handling

Format:	Lyophilized
Reconstitution:	Reconstitution Volume: 1.0 mL Reconstitution Buffer: Restore with deionized water (or equivalent)

Handling

Concentration:	1.0 mg/mL
Buffer:	Buffer: 0.02 M Potassium Phosphate, 0.15 M Sodium Chloride, pH 7.2 Stabilizer: 10 mg/mL Bovine Serum Albumin (BSA) - Immunoglobulin and Protease free Preservative: 0.01 % (w/v) Sodium Azide
Preservative:	Sodium azide
Precaution of Use:	This product contains Sodium azide: a POISONOUS AND HAZARDOUS SUBSTANCE which should be handled by trained staff only.
Handling Advice:	Product is photosensitive and should be protected from light. Avoid cycles of freezing and thawing. This vial contains a relatively low volume of reagent (25 μ L). To minimize loss of volume dilute 1:10 by adding 225 μ L of the buffer stated above directly to the vial. Recap, mix thoroughly and briefly centrifuge to collect the volume at the bottom of the vial. Use this intermediate dilution when calculating final dilutions as recommended below. Store the vial at -20 °C or below after dilution.
Storage:	RT, 4 °C, -20 °C
Expiry Date:	12 months

Images



Western Blotting

Image 1. Western Blot of Goat anti-F(ab')₂ HUMAN IgG F(c) Antibody Fluorescein Conjugated Pre-Adsorbed Lane 1: Human Fc Load: 50 ng per lane Secondary antibody: F(ab')₂ HUMAN IgG F(c) Antibody Fluorescein Conjugated Pre-Adsorbed at 1:1,000 for 60 min at RT Block: ABIN925618 for 30 min at RT