

Datasheet for ABIN965100

**Goat anti-Human IgG (F(ab')<sub>2</sub> Region) Antibody (FITC) -  
Preadsorbed**[Go to Product page](#)**1** Image

## Overview

Quantity:	1 mg
Target:	IgG
Binding Specificity:	F(ab') <sub>2</sub> Region
Reactivity:	Human
Host:	Goat
Clonality:	Polyclonal
Conjugate:	FITC
Application:	Flow Cytometry (FACS), FLISA, Fluorescence Microscopy (FM)

## Product Details

Immunogen:	Immunogen: Human IgG F(ab') <sub>2</sub> fragment
Isotype:	IgG
Fragment:	F(ab') <sub>2</sub> fragment
Specificity:	Assay by immunoelectrophoresis resulted in a single precipitin arc against anti-Fluorescein, anti-Goat Serum, Human IgG, Human IgG F(ab') <sub>2</sub> and Human Serum.
Characteristics:	This product is designed for immunofluorescence microscopy, fluorescence based plate assays (FLISA) and fluorescent western blotting. This product is also suitable for multiplex analysis, including multicolor imaging, utilizing various commercial platforms.
Purification:	Preadsorption: Solid phase absorption
Labeling Ratio:	2.81

## Target Details

---

Target:	IgG
Abstract:	<a href="#">IgG Products</a>
Target Type:	Antibody
Background:	<p>Synonyms: Goat F(ab')<sub>2</sub> Anti-Human IgG F(ab')<sub>2</sub> Fluorescein Conjugated Antibody Pre-Adsorbed, Goat F(ab')<sub>2</sub> Anti-Human IgG F(ab')<sub>2</sub> Antibody FITC Conjugation</p> <p>Background: F(ab')<sub>2</sub> Anti-Human IgG F(ab')<sub>2</sub> Fluorescein Antibody generated in goat detects F(ab')<sub>2</sub> from human. Representing approximately 75 % of serum immunoglobulins in humans, IgG is the most abundant antibody isotype found in the circulation. IgG molecules are synthesized and secreted by plasma B cells. Secondary Antibodies are available in a variety of formats and conjugate types. When choosing a secondary antibody product, consideration must be given to species and immunoglobulin specificity, conjugate type, fragment and chain specificity, level of cross-reactivity, and host-species source and fragment composition. F(ab')<sub>2</sub> Antibody is ideal for investigators who routinely perform flow cytometry, immunohistochemistry or IHC and other immunoassays.</p>

## Application Details

---

Application Notes:	<p>Application Note: F(ab')<sub>2</sub> Anti-Human IgG F(ab')<sub>2</sub> Fluorescein Antibody is designed for immunofluorescence microscopy, fluorescence based plate assays (FLISA) and fluorescent western blotting. This product is also suitable for multiplex analysis, including multicolor imaging, utilizing various commercial platforms. Suitable for immunomicroscopy and flow cytometry or FACS analysis as well as other antibody based fluorescent assays requiring extremely low background levels, absence of F(c) mediated binding, lot-to-lot consistency, high titer and specificity.</p> <p>FLISA Dilution: 1:10,000 - 1:50,000</p> <p>Flow Cytometry Dilution: 1:500 - 1:2,500</p> <p>IF Microscopy Dilution: 1:1,000 - 1:5,000</p>
Comment:	Excitation/Emission wavelength: 494 nm/514 nm
Restrictions:	For Research Use only

## Handling

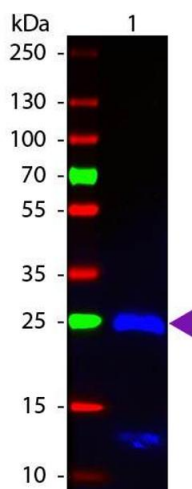
---

Format:	Lyophilized
Reconstitution:	Reconstitution Volume: 1.0 mL Reconstitution Buffer: Restore with deionized water (or equivalent)

## Handling

Concentration:	1.0 mg/mL
Buffer:	Buffer: 0.01 M Sodium Phosphate, 0.15 M Sodium Chloride, pH 7.2 Stabilizer: 10 mg/mL Bovine Serum Albumin (BSA) - Immunoglobulin and Protease free Preservative: 0.01 % (w/v) Sodium Azide
Preservative:	Sodium azide
Precaution of Use:	This product contains Sodium azide: a POISONOUS AND HAZARDOUS SUBSTANCE which should be handled by trained staff only.
Handling Advice:	Product is photosensitive and should be protected from light. Avoid cycles of freezing and thawing. Do NOT add Sodium Azide! This vial contains a relatively low volume of reagent (25 µL). To minimize loss of volume dilute 1:10 by adding 225 µL of the buffer stated above directly to the vial. Recap, mix thoroughly and briefly centrifuge to collect the volume at the bottom of the vial. Use this intermediate dilution when calculating final dilutions as recommended below. Store the vial at -20 °C or below after dilution.
Storage:	RT, 4 °C, -20 °C
Storage Comment:	Store vial at -20 °C or below prior to opening.
Expiry Date:	12 months

## Images



### Western Blotting

**Image 1.** Western blot of Fluorescein conjugated Goat F(ab')<sub>2</sub> Anti-Human IgG F(ab')<sub>2</sub> Pre-Adsorbed secondary antibody. Lane 1: Human Fab2. Lane 2: None. Load: 50 ng per lane. Primary antibody: None. Secondary antibody: Fluorescein goat secondary antibody at 1:1,000 for 60 min at RT. Blocking: ABIN925618 for 30 min at RT. Predicted/Observed size: 25 kDa, 25 kDa for Human IgG F(ab')<sub>2</sub>. Other band(s): None.