

Datasheet for ABIN965162

**Goat anti-Mouse IgG (Heavy & Light Chain) Antibody (FITC) -
Preadsorbed**[Go to Product page](#)**1** Image

Overview

Quantity:	1 mg
Target:	IgG
Binding Specificity:	Heavy & Light Chain
Reactivity:	Mouse
Host:	Goat
Clonality:	Polyclonal
Conjugate:	FITC
Application:	ELISA, Immunohistochemistry (IHC), Western Blotting (WB), Flow Cytometry (FACS), FLISA, Fluorescence Microscopy (FM)

Product Details

Immunogen:	Immunogen: Mouse IgG whole molecule
Isotype:	IgG
Fragment:	F(ab') ₂ fragment
Specificity:	F(ab') ₂ Mouse IgG (H&L) Antibody Fluorescein Conjugated Assay by immunoelectrophoresis resulted in a single precipitin arc against anti-Fluorescein, anti-Goat Serum, Mouse IgG and Mouse Serum.
Characteristics:	F(ab') ₂ Mouse IgG (H&L) Antibody Fluorescein Conjugated is designed for immunofluorescence microscopy, fluorescence based plate assays (FLISA) and fluorescent western blotting. This product is also suitable for multiplex analysis, including multicolor imaging, utilizing various commercial platforms.

Product Details

The antibody was prepared from monospecific antiserum by immunoaffinity chromatography using Mouse IgG coupled to agarose beads followed by solid phase adsorption(s) to remove any unwanted reactivities, pepsin digestion and chromatographic separation.

Purification: Preadsorption: Solid phase absorption

Sterility: Sterile filtered

Labeling Ratio: 2.52

Target Details

Target: IgG

Abstract: [IgG Products](#)

Target Type: Antibody

Background: Synonyms: Goat F(ab')₂ Anti-Mouse IgG Antibody Fluorescein Conjugation, Goat Fab₂ Anti-Mouse IgG FITC conjugated Antibody

Background: F(ab')₂ Anti-Mouse IgG (H&L) Fluorescein Antibody generated in goat was generated by enzymatic cleavage and subsequent separation from the Fc fragment. Because of their smaller size, F(ab')₂ fragments offer several advantages over intact antibodies for use in certain immunochemical techniques and experimental applications. F(ab')₂ fragments penetrate tissue samples and show better antigen recognition and signal generation in IHC. F(ab')₂ fragments lack the Fc region and therefore do not bind Fc receptors which effectively lowers background staining. F(ab')₂ Antibody is ideal for investigators who routinely perform flow cytometry, immunohistochemistry or IHC and other immunoassays.

Application Details

Application Notes: Immunohistochemistry Dilution: 1:1,000 - 1:5,000

Application Note: F(ab')₂ Mouse IgG (H&L) Antibody Fluorescein Conjugated is suitable for immunomicroscopy and flow cytometry or FACS analysis as well as other antibody based fluorescent assays requiring extremely low background levels, absence of F(c) mediated binding, lot-to-lot consistency, high titer and specificity. This product is also suitable for multiplex analysis, including multicolor imaging, utilizing various commercial platforms.

FLISA Dilution: 1:10,000 - 1:50,000

ELISA Dilution: 1:20,000 - 1:100,000

Flow Cytometry Dilution: 1:500 - 1:2,500

Western Blot Dilution: 1:2,000 - 1:10,000

Application Details

IF Microscopy Dilution: 1:1,000 - 1:5,000

Comment: Excitation/Emission wavelength: 494 nm/514 nm

Restrictions: For Research Use only

Handling

Format: Lyophilized

Reconstitution: Reconstitution Volume: 1.0 mL
Reconstitution Buffer: Restore with deionized water (or equivalent)

Concentration: 1.0 mg/mL

Buffer: Buffer: 0.02 M Potassium Phosphate, 0.15 M Sodium Chloride, pH 7.2
Stabilizer: 10 mg/mL Bovine Serum Albumin (BSA) - Immunoglobulin and Protease free
Preservative: 0.01 % (w/v) Sodium Azide

Preservative: Sodium azide

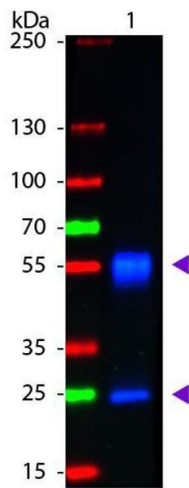
Precaution of Use: This product contains Sodium azide: a POISONOUS AND HAZARDOUS SUBSTANCE which should be handled by trained staff only.

Handling Advice: Product is photosensitive and should be protected from light.
Avoid cycles of freezing and thawing.

Storage: RT, 4 °C, -20 °C

Storage Comment: Store vial at -20 °C prior to opening. Aliquot contents and freeze at -20 °C or below for extended storage. This product is stable for several weeks at 0 °C as an undiluted liquid.

Expiry Date: 12 months



Western Blotting

Image 1. Western Blot of Goat anti-Mouse IgG Fluorescein Conjugated Antibody. Lane 1: Mouse IgG. Lane 2: None. Load: 50 ng per lane. Primary antibody: None. Secondary antibody: Fluorescein goat secondary antibody at 1:1,000 for 60 min at RT. Block: ABIN925618 for 30 min at RT. Predicted/Observed size: 28 & 55 kDa, 28 & 55 kDa for Mouse IgG. Other band(s): None.