

Datasheet for ABIN965192

## Rabbit anti-Mouse IgG (Heavy & Light Chain) Antibody - Preadsorbed

[Go to Product page](#)

### 1 Image

#### Overview

Quantity:	500 µg
Target:	IgG
Binding Specificity:	Heavy & Light Chain
Reactivity:	Mouse
Host:	Rabbit
Clonality:	Polyclonal
Application:	ELISA, Immunohistochemistry (IHC), Western Blotting (WB)

#### Product Details

Immunogen:	Immunogen: Anti-Mouse IgG was produced by repeated immunization with Mouse IgG whole molecule in goat. Immunogen Type: Native Protein
Isotype:	IgG
Fragment:	F(ab') <sub>2</sub> fragment
Specificity:	Assay by immunoelectrophoresis resulted in a single precipitin arc against anti-Rabbit Serum, Mouse IgG and Mouse Serum.
Characteristics:	F(ab') <sub>2</sub> MOUSE IgG (H&L) Antibody Pre-Adsorbed was generated by enzymatic cleavage and subsequent separation from the Fc fragment. Because of their smaller size, F(ab') <sub>2</sub> fragments offer several advantages over intact antibodies for use in certain immunochemical techniques and experimental applications. F(ab') <sub>2</sub> fragments penetrate into tissue samples and show better antigen recognition and signal generation in IHC. F(ab') <sub>2</sub> fragments lack the Fc region

## Product Details

---

and therefore do not bind Fc receptors which effectively lowers background staining. F(ab')<sub>2</sub> MOUSE IgG (H&L) Antibody Pre-Adsorbed is ideal for investigators who routinely perform flow cytometry, immunohistochemistry or IHC and other immunoassays.

Purification: Preadsorption: Solid phase absorption

## Target Details

---

Target: IgG

Abstract: [IgG Products](#)

Target Type: Antibody

Background: Synonyms: Rabbit F(ab')<sub>2</sub> Anti-Mouse IgG Antibody Pre-Adsorbed  
Background: F(ab')<sub>2</sub> MOUSE IgG (H&L) Antibody Pre-Adsorbed was generated by enzymatic cleavage and subsequent separation from the Fc fragment. Because of their smaller size, F(ab')<sub>2</sub> fragments offer several advantages over intact antibodies for use in certain immunochemical techniques and experimental applications. F(ab')<sub>2</sub> fragments penetrate into tissue samples and show better antigen recognition and signal generation in IHC. F(ab')<sub>2</sub> fragments lack the Fc region and therefore do not bind Fc receptors which effectively lowers background staining. F(ab')<sub>2</sub> MOUSE IgG (H&L) Antibody Pre-Adsorbed is ideal for investigators who routinely perform flow cytometry, immunohistochemistry or IHC and other immunoassays.

## Application Details

---

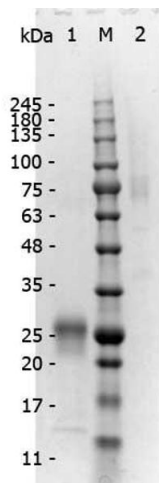
Application Notes: Immunohistochemistry Dilution: 1:1,000 - 1:5,000  
Application Note: Suitable for immunomicroscopy and flow cytometry or FACS analysis as well as other antibody based fluorescent assays requiring extremely low background levels, absence of F(c) mediated binding, lot-to-lot consistency, high titer and specificity. The maximum amount of reagent required to stain 1 x 10<sup>6</sup> cells in flow cytometry is approximately 1.0 µg of antibody. Lesser amounts of reagent may be sufficient for staining. Optimal titers for other applications should be determined by the researcher. As a general guideline dilutions of 1:100 to 1:250 should be suitable for most applications.  
ELISA Dilution: 1:2,000 - 1:20,000  
Western Blot Dilution: 1:1,000 - 1:10,000

Restrictions: For Research Use only

## Handling

Format:	Liquid
Concentration:	1.0 mg/mL
Buffer:	Buffer: 0.02 M Potassium Phosphate, 0.15 M Sodium Chloride, pH 7.2 Stabilizer: None Preservative: 0.01 % (w/v) Sodium Azide
Preservative:	Sodium azide
Precaution of Use:	This product contains Sodium azide: a POISONOUS AND HAZARDOUS SUBSTANCE which should be handled by trained staff only.
Storage:	4 °C,-20 °C
Storage Comment:	Store secondary antibody conjugate at 4 °C prior to restoration. For extended storage aliquot contents and freeze at -24 °C or below. This product is stable for several weeks at 4 °C as an undiluted liquid.
Expiry Date:	12 months

## Images



### SDS-PAGE

**Image 1.** SDS-PAGE of F(ab')<sub>2</sub> Rabbit anti-Mouse IgG Antibody min x Human serum proteins. Lane 1: Reduced F(ab')<sub>2</sub> Rabbit anti-Mouse IgG Antibody min x Human serum proteins. Lane 2: 5µL OPAL Pre-stained Marker MB-210-0500. Lane 3: Non-reduced F(ab')<sub>2</sub> Rabbit anti-Mouse IgG Antibody min x Human serum proteins. Load: 1µg per lane. Predicted/Observed size: Non-reduced at 75 kDa , Reduced at 25 kDa.