

Datasheet for ABIN965211

Goat anti-Rabbit IgG (Fc Region) Antibody - Preadsorbed[Go to Product page](#)**1** Image

Overview

Quantity:	1 mg
Target:	IgG
Binding Specificity:	Fc Region
Reactivity:	Rabbit
Host:	Goat
Clonality:	Polyclonal
Application:	ELISA, Immunohistochemistry (IHC), Western Blotting (WB)

Product Details

Immunogen:	Immunogen: Rabbit IgG F(c) fragment
Isotype:	IgG
Fragment:	F(ab') ₂ fragment
Specificity:	Assay by immunoelectrophoresis resulted in a single precipitin arc against anti-Goat Serum, Rabbit IgG, Rabbit IgG F(c) and Rabbit Serum.
Purification:	Preadsorption: Solid phase absorption

Target Details

Target:	IgG
Abstract:	IgG Products
Target Type:	Antibody

Target Details

Background: Synonyms: Goat F(ab')₂ Anti-Rabbit IgG F(c) Antibody, Goat Fab₂ Anti-Rabbit IgG Fc Antibody
Background: F(ab')₂ Anti-Rabbit IgG F(c) Antibody was generated in goat and detects specifically Rabbit IgG F(c). Secondary Antibodies are available in a variety of formats and conjugate types. When choosing a secondary antibody product, consideration must be given to species and immunoglobulin specificity, conjugate type, fragment and chain specificity, level of cross-reactivity, and host-species source and fragment composition.

Application Details

Application Notes: Immunohistochemistry Dilution: 1:500 - 1:2,000
Application Note: Suitable for immunomicroscopy and flow cytometry or FACS analysis as well as other antibody based fluorescent assays requiring extremely low background levels, absence of F(c) mediated binding, lot-to-lot consistency, high titer and specificity. The maximum amount of reagent required to stain 1 x 10⁶ cells in flow cytometry is approximately 1.0 µg of antibody. Lesser amounts of reagent may be sufficient for staining. Optimal titers for other applications should be determined by the researcher. As a general guideline dilutions of 1:100 to 1:250 should be suitable for most applications.
ELISA Dilution: 1:20,000
Western Blot Dilution: 1:500 - 1:2,000

Restrictions: For Research Use only

Handling

Format: Liquid

Concentration: 1.0 mg/mL

Buffer: Buffer: 0.02 M Potassium Phosphate, 0.15 M Sodium Chloride, pH 7.2

Stabilizer: None

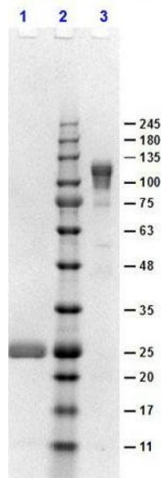
Preservative: 0.01 % (w/v) Sodium Azide

Preservative: Sodium azide

Precaution of Use: This product contains Sodium azide: a POISONOUS AND HAZARDOUS SUBSTANCE which should be handled by trained staff only.

Storage: 4 °C, -20 °C

Storage Comment: Store vial at 4 °C prior to opening. This product is stable for several weeks at 4 °C as an undiluted liquid. For extended storage aliquot contents and freeze at -24 °C or below.



SDS-PAGE

Image 1. SDS-PAGE results of Goat F(ab')₂ Anti-Rabbit IgG F(c) Antibody. Lane 1: reduced Goat F(ab')₂ Anti-Rabbit IgG F(c). Lane 2: Opal PreStained Molecular Weight Ladder . Lane 3: non-reduced Goat F(ab')₂ Anti-Rabbit IgG F(c). Load: 1.0µg. 4-20% SDS Gel, Coomassie Blue Stained.