

Datasheet for ABIN965236

Goat anti-Rat IgG (Heavy & Light Chain) Antibody - Preadsorbed

[Go to Product page](#)

1 Image

Overview

Quantity:	1 mg
Target:	IgG
Binding Specificity:	Heavy & Light Chain
Reactivity:	Rat
Host:	Goat
Clonality:	Polyclonal
Application:	ELISA, Immunohistochemistry (IHC), Western Blotting (WB)

Product Details

Immunogen:	Immunogen: Anti-Rat IgG was produced by repeated immunization with Rat IgG whole molecule in goat. Immunogen Type: Native Protein
Isotype:	IgG
Fragment:	F(ab') ₂ fragment
Specificity:	Assay by immunoelectrophoresis resulted in a single precipitin arc against anti-Goat Serum, Rat IgG and Rat Serum.
Cross-Reactivity:	Rat (Rattus)
Characteristics:	F(ab') ₂ Rat IgG (H&L) Antibody Pre-Adsorbed was generated by enzymatic cleavage and subsequent separation from the Fc fragment. Because of their smaller size, F(ab) ₂ fragments offer several advantages over intact antibodies for use in certain immunochemical techniques and experimental applications. F(ab) ₂ fragments penetrate into tissue samples and show

Product Details

better antigen recognition and signal generation in IHC. F(ab)₂ fragments lack the Fc region and therefore do not bind Fc receptors which effectively lowers background staining. F(ab)₂ Rat IgG (H&L) Antibody Pre-Adsorbed is ideal for investigators who routinely perform flow cytometry, immunohistochemistry or IHC and other immunoassays.

Purification: Preadsorption: Solid phase absorption

Sterility: Sterile filtered

Target Details

Target: IgG

Abstract: [IgG Products](#)

Target Type: Antibody

Background: Synonyms: Goat F(ab)₂ Anti-Rat IgG Antibody, Goat Fab₂ Anti-Rat IgG Antibody
Background: F(ab)₂ Rat IgG (H&L) Antibody Pre-Adsorbed was generated by enzymatic cleavage and subsequent separation from the Fc fragment. Because of their smaller size, F(ab)₂ fragments offer several advantages over intact antibodies for use in certain immunochemical techniques and experimental applications. F(ab)₂ fragments penetrate into tissue samples and show better antigen recognition and signal generation in IHC. F(ab)₂ fragments lack the Fc region and therefore do not bind Fc receptors which effectively lowers background staining. F(ab)₂ Rat IgG (H&L) Antibody Pre-Adsorbed is ideal for investigators who routinely perform flow cytometry, immunohistochemistry or IHC and other immunoassays.

Application Details

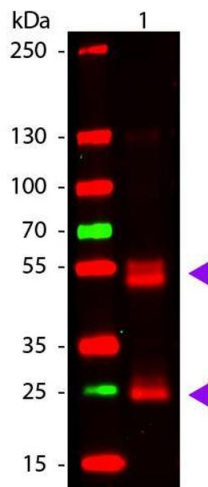
Application Notes: Immunohistochemistry Dilution: 1:1,000 - 1:5,000
Application Note: Suitable for immunomicroscopy and flow cytometry or FACS analysis as well as other antibody based fluorescent assays requiring extremely low background levels, absence of F(c) mediated binding, lot-to-lot consistency, high titer and specificity. The maximum amount of reagent required to stain 1 x 10⁶ cells in flow cytometry is approximately 1.0 µg of antibody. Lesser amounts of reagent may be sufficient for staining. Optimal titers for other applications should be determined by the researcher. As a general guideline dilutions of 1:100 to 1:250 should be suitable for most applications.
ELISA Dilution: 1:20,000 - 1:100,000
Western Blot Dilution: 1:2,000 - 1:10,000

Restrictions: For Research Use only

Handling

Format:	Liquid
Concentration:	3.6 mg/mL
Buffer:	Buffer: 0.02 M Potassium Phosphate, 0.15 M Sodium Chloride, pH 7.2 Stabilizer: None Preservative: 0.01 % (w/v) Sodium Azide
Preservative:	Sodium azide
Precaution of Use:	This product contains Sodium azide: a POISONOUS AND HAZARDOUS SUBSTANCE which should be handled by trained staff only.
Storage:	4 °C, -20 °C
Storage Comment:	Store vial at 4 °C prior to restoration. For extended storage aliquot contents and freeze at -24 °C or below. This product is stable for several weeks at 4 °C as an undiluted liquid.
Expiry Date:	12 months

Images



Western Blotting

Image 1. Western Blot of Goat anti-Rat IgG Antibody. Lane 1: Rat IgG. Lane 2: None. Load: 50 ng per lane. Primary antibody: Rat antibody at 1,000 overnight at 4°C. Secondary antibody: 649 goat secondary antibody at 1:20,000 for 30 min at RT. Block: ABIN925618 for 30 min at RT. Predicted/Observed size: 28 & 55 kDa, 28 & 55 kDa for Rat IgG. Other band(s): None.