

Datasheet for ABIN965245

Goat anti-Rat IgG (Fc Region) Antibody - Preadsorbed[Go to Product page](#)**1** Image

Overview

Quantity:	1 mg
Target:	IgG
Binding Specificity:	Fc Region
Reactivity:	Rat
Host:	Goat
Clonality:	Polyclonal
Application:	ELISA, Immunohistochemistry (IHC), Western Blotting (WB)

Product Details

Immunogen:	Immunogen: Anti-Rat IgG F(c) was produced by repeated immunization with Rat F(c) fragment in goat. Immunogen Type: Native Protein
Isotype:	IgG
Fragment:	F(ab') ₂ fragment
Specificity:	Assay by immunoelectrophoresis resulted in a single precipitin arc against anti-Goat Serum, Rat IgG, Rat IgG F(c) and Rat Serum.
Cross-Reactivity:	Rat (Rattus)
Characteristics:	Anti-Rat Fc antibody generated in goat detects specifically rat IgG F(c). This secondary antibody anti-Rat is ideal for investigators who routinely perform titration assays, western-blot, immunoprecipitation and more generally immunoassays. Anti-Rat Fc antibody generated in goat detects specifically rat IgG F(c). This secondary antibody

Product Details

anti-Rat is ideal for investigators who routinely perform titration assays, western-blot, immunoprecipitation and more generally immunoassays.

Purification: Preadsorption: Solid phase absorption

Target Details

Target: IgG

Abstract: [IgG Products](#)

Target Type: Antibody

Background: Synonyms: Goat F(ab')₂ Anti-Rat IgG Fc Antibody, Goat Fab₂ Anti-Rat IgG Fc Antibody
Background: F(ab')₂ Anti-Rat IgG Fc Antibody was generated in goat and detects specifically Rat IgG Fc. Secondary Antibodies are available in a variety of formats and conjugate types. When choosing a secondary antibody product, consideration must be given to species and immunoglobulin specificity, conjugate type, fragment and chain specificity, level of cross-reactivity, and host-species source and fragment composition.

Application Details

Application Notes: Immunohistochemistry Dilution: 1:1,000 - 1:3,000
Application Note: Rat Fc secondary antibody is suitable for immunoblotting, western blot, dot blot, ELISA, and immunohistochemistry as well as other peroxidase-antibody based enzymatic assays requiring lot-to-lot consistency.
ELISA Dilution: 1:10,000 - 1:50,000
Western Blot Dilution: 1:2,000 - 1:5,000

Restrictions: For Research Use only

Handling

Format: Liquid

Concentration: 1.0 mg/mL

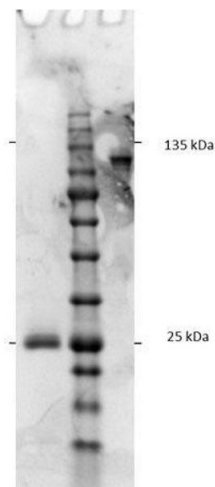
Buffer: 0.02 M Potassium Phosphate, 0.15 M Sodium Chloride, pH 7.2
Stabilizer: None
Preservative: 0.01 % (w/v) Sodium Azide

Preservative: Sodium azide

Handling

Precaution of Use:	This product contains Sodium azide: a POISONOUS AND HAZARDOUS SUBSTANCE which should be handled by trained staff only.
Storage:	4 °C, -20 °C
Storage Comment:	Store vial at 4 °C prior to restoration. For extended storage aliquot contents and freeze at -24 °C or below. This product is stable for several weeks at 4 °C as an undiluted liquid.
Expiry Date:	12 months

Images



SDS-PAGE

Image 1. SDS-PAGE results of Goat F(ab')₂ Anti-Rat IgG F(c) Antibody. Lane 1: reduced Goat F(ab')₂ anti-Rat. Lane 2: Opal Prestained Ladder - MB-210-0500. Lane 3: non-reduced Goat F(ab')₂ anti-Rat. Load: 1.0ug. 4-20% Lonza SDS-PAGE; Coomassie Stained; BioRad ChemiDoc Imaged.