

Datasheet for ABIN965280

Donkey anti-Rat IgG (Heavy & Light Chain) Antibody (Texas Red (TR)) - Preadsorbed[Go to Product page](#)**1** Image

Overview

Quantity:	500 µL
Target:	IgG
Binding Specificity:	Heavy & Light Chain
Reactivity:	Rat
Host:	Donkey
Clonality:	Polyclonal
Conjugate:	Texas Red (TR)
Application:	Fluorescence Microscopy (FM)

Product Details

Immunogen:	Immunogen: Rat IgG whole molecule
Isotype:	IgG
Fragment:	F(ab') ₂ fragment
Specificity:	Assay by immunoelectrophoresis resulted in a single precipitin arc against anti-Donkey Serum, Rat IgG and Rat Serum.
Characteristics:	This product is designed for immunofluorescence microscopy, fluorescence based plate assays (FLISA) and fluorescent western blotting. This product is also suitable for multiplex analysis, including multicolor imaging, utilizing various commercial platforms.
Purification:	Preadsorption: Solid phase absorption
Labeling Ratio:	5.8

Target Details

Target:	IgG
Abstract:	IgG Products
Target Type:	Antibody
Background:	<p>Synonyms: Donkey F(ab')₂ Anti-Rat IgG Texas Red™ Conjugated Pre-Adsorbed Antibody, Donkey Fab2 Anti-Rat IgG Antibody Texas Red™ Conjugation</p> <p>Background: F(ab')₂ Anti-Rat IgG (H&L) Antibody generated in donkey detects rat IgG. Representing approximately 75 % of serum immunoglobulins, IgG is the most abundant antibody isotype found in the circulation. IgG molecules are synthesized and secreted by plasma B cells. Secondary Antibodies are available in a variety of formats and conjugate types. When choosing a secondary antibody product, consideration must be given to species and immunoglobulin specificity, conjugate type, fragment and chain specificity, level of cross-reactivity, and host-species source and fragment composition. F(ab')₂ Antibody is ideal for investigators who routinely perform flow cytometry, immunofluorescence, IHC, and other immunoassays. This F(ab')₂ Anti-Rat IgG Antibody is conjugated to Texas Red™.</p>

Application Details

Application Notes:	<p>Application Note: This product is designed for immunofluorescence microscopy, fluorescence based plate assays (FLISA) and fluorescent western blotting. This product is also suitable for multiplex analysis, including multicolor imaging, utilizing various commercial platforms requiring extremely low background levels, absence of F(c) mediated binding, lot-to-lot consistency, high titer and specificity.</p> <p>IF Microscopy Dilution: 1:500 - 1:2,500</p>
Comment:	Texas Red™ is a registered trademark of Molecular Probes Inc.
Restrictions:	For Research Use only

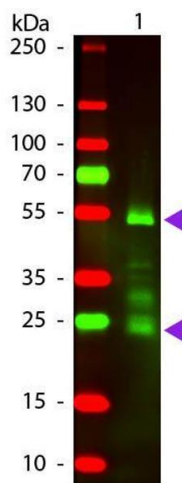
Handling

Format:	Lyophilized
Reconstitution:	<p>Reconstitution Volume: 500 µL</p> <p>Reconstitution Buffer: Restore with deionized water (or equivalent)</p>
Concentration:	1.0 mg/mL
Buffer:	<p>Buffer: 0.02 M Potassium Phosphate, 0.15 M Sodium Chloride, pH 7.2</p> <p>Stabilizer: 10 mg/mL Bovine Serum Albumin (BSA) - Immunoglobulin and Protease free</p>

Handling

	Preservative: 0.01 % (w/v) Sodium Azide
Preservative:	Sodium azide
Precaution of Use:	This product contains Sodium azide: a POISONOUS AND HAZARDOUS SUBSTANCE which should be handled by trained staff only.
Handling Advice:	Avoid cycles of freezing and thawing. Product is photosensitive and should be protected from light.
Storage:	RT, 4 °C, -20 °C
Storage Comment:	Store vial at 4 °C prior to restoration. For extended storage aliquot contents and freeze at -24 °C or below. This product is stable for several weeks at 4 °C as an undiluted liquid.
Expiry Date:	12 months

Images



Western Blotting

Image 1. Western Blot of Texas conjugated Donkey F(ab')₂ Anti-Rat IgG Pre-Adsorbed secondary antibody. Lane 1: Rat IgG. Lane 2: None. Load: 50 ng per lane. Primary antibody: None. Secondary antibody: Texas donkey secondary antibody at 1:1,000 for 60 min at RT. Blocking: ABIN925618 for 30 min at RT. Predicted/Observed size: 25 & 55 kDa, 25 & 55 kDa for Rat IgG. Other band(s): Rat IgG splice variants and isoforms.