



Datasheet for ABIN965320

Donkey anti-Goat IgG (Heavy & Light Chain) Antibody (FITC) - Preadsorbed



[Go to Product page](#)

1 Image

Overview

| | |
|----------------------|--|
| Quantity: | 1 mg |
| Target: | IgG |
| Binding Specificity: | Heavy & Light Chain |
| Reactivity: | Goat |
| Host: | Donkey |
| Clonality: | Polyclonal |
| Conjugate: | FITC |
| Application: | Flow Cytometry (FACS), FLISA, Fluorescence Microscopy (FM) |

Product Details

| | |
|------------------|---|
| Immunogen: | Immunogen: Goat IgG whole molecule |
| Isotype: | IgG |
| Fragment: | Fab fragment |
| Specificity: | Assay by immunoelectrophoresis resulted in a single precipitin arc against anti-Fluorescein and anti-Donkey Serum. |
| Characteristics: | This product is designed for immunofluorescence microscopy, fluorescence based plate assays (FLISA) and fluorescent western blotting. This product is also suitable for multiplex analysis, including multicolor imaging, utilizing various commercial platforms. |
| Purification: | Preadsorption: Solid phase absorption |
| Sterility: | Sterile filtered |

Product Details

Labeling Ratio: 4.0

Target Details

Target: IgG

Abstract: [IgG Products](#)

Target Type: Antibody

Background: Synonyms: Donkey Fab Anti-Goat Antibody Fluorescein Conjugation, Donkey Fab Anti-Goat FITC Conjugated Antibody

Background: Fab Anti-Goat IgG Fluorescein Antibody generated in donkey detects goat IgG. This product possesses the F(ab) region possessing the epitope-recognition site, both heavy and light chains of the antibody molecule are present. Secondary Antibodies are available in a variety of formats and conjugate types. When choosing a secondary antibody product, consideration must be given to species and immunoglobulin specificity, conjugate type, fragment and chain specificity, level of cross-reactivity, and host-species source and fragment composition.

Application Details

Application Notes: Application Note: Suitable for immunomicroscopy and flow cytometry or FACS analysis as well as other antibody based fluorescent assays requiring extremely low background levels, absence of F(c) mediated binding, lot-to-lot consistency, high titer and specificity.

FLISA Dilution: 1:10,000 - 1:50,000

Flow Cytometry Dilution: 1:500 - 1:2,500

IF Microscopy Dilution: 1:1,000 - 1:5,000

Comment: Excitation/Emission wavelength: 494 nm/514 nm

Restrictions: For Research Use only

Handling

Format: Lyophilized

Reconstitution: Reconstitution Volume: 1.0 mL

Reconstitution Buffer: Restore with deionized water (or equivalent)

Concentration: 1.0 mg/mL

Buffer: Buffer: 0.02 M Potassium Phosphate, 0.15 M Sodium Chloride, pH 7.2

Handling

Stabilizer: 10 mg/mL Bovine Serum Albumin (BSA) - Immunoglobulin and Protease free
Preservative: 0.01 % (w/v) Sodium Azide

Preservative: Sodium azide

Precaution of Use: This product contains Sodium azide: a POISONOUS AND HAZARDOUS SUBSTANCE which should be handled by trained staff only.

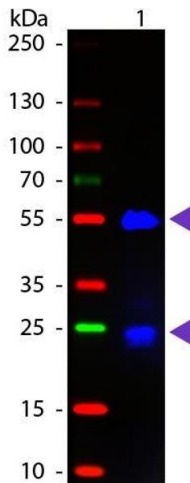
Handling Advice: Product is photosensitive and should be protected from light.
Avoid cycles of freezing and thawing.
This vial contains a relatively low volume of reagent (25 μ L). To minimize loss of volume dilute 1:10 by adding 225 μ L of the buffer stated above directly to the vial. Recap, mix thoroughly and briefly centrifuge to collect the volume at the bottom of the vial. Use this intermediate dilution when calculating final dilutions as recommended below.

Storage: RT, 4 °C, -20 °C

Storage Comment: Store the vial at -20 °C or below after dilution.

Expiry Date: 12 months

Images



Western Blotting

Image 1. Western blot of Fluorescein conjugated Donkey Fab Anti-Goat IgG secondary antibody. Lane 1: Goat IgG. Lane 2: None. Load: 50 ng per lane. Primary antibody: None. Secondary antibody: Fluorescein donkey secondary antibody at 1:1,000 for 60 min at RT. Blocking: ABIN925618 for 30 min at RT. Predicted/Observed size: 25 & 55 kDa, 25 & 55 kDa for Goat IgG. Other band(s): None.