



Datasheet for ABIN965345

Goat anti-Human IgG (Heavy & Light Chain) Antibody - Preadsorbed



[Go to Product page](#)

1 Image

Overview

Quantity:	1 mg
Target:	IgG
Binding Specificity:	Heavy & Light Chain
Reactivity:	Human
Host:	Goat
Clonality:	Polyclonal
Application:	ELISA, Immunohistochemistry (IHC), Western Blotting (WB)

Product Details

Immunogen:	Immunogen: Anti-Human IgG whole molecule was produced by repeated immunization with Human IgG whole molecule in goat. Immunogen Type: Native Protein
Isotype:	IgG
Fragment:	Fab fragment
Specificity:	Assay by immunoelectrophoresis resulted in a single precipitin arc against anti-Goat Serum.
Cross-Reactivity:	Human
Characteristics:	Anti-Human IgG whole molecule antibody generated in goat detects specifically human IgG whole molecule. This secondary antibody anti-Human is ideal for investigators who routinely perform ELISA, Sandwich ELISA, titration assays, western-blot, immunoprecipitation and more generally immunoassays. Anti-Human IgG whole molecule antibody generated in goat detects specifically human IgG

Product Details

whole molecule. This secondary antibody anti-Human is ideal for investigators who routinely perform ELISA, Sandwich ELISA, titration assays, western-blot, immunoprecipitation and more generally immunoassays.

Purification: Preadsorption: Solid phase absorption

Target Details

Target: IgG

Abstract: [IgG Products](#)

Target Type: Antibody

Background: Synonyms: Goat Fab Anti-Human IgG Antibody, Fab Anti-Human IgG (H&L) secondary antibody, Fab Anti-Human IgG (Heavy and Light Chain) Secondary Antibody
Background: Fab Anti-Human IgG (H&L) Antibody generated in goat detects immunoglobulin g from human, both heavy and light chains of the antibody molecule are present. Each IgG has two antigen binding sites. Representing approximately 75 % of serum immunoglobulins in humans, IgG is the most abundant antibody isotype found in the circulation. IgG molecules are synthesized and secreted by plasma B cells. Secondary Antibodies are available in a variety of formats and conjugate types. When choosing a secondary antibody product, consideration must be given to species and immunoglobulin specificity, conjugate type, fragment and chain specificity, level of cross-reactivity, and host-species source and fragment composition.

Application Details

Application Notes: Immunohistochemistry Dilution: 1:1,000 - 1:5,000
Application Note: Fab Anti-Human IgG (H&L) secondary antibody is ideal for investigators who routinely perform ELISA, Sandwich ELISA, titration assays, western-blot, immunoprecipitation and more generally immunoassays. Suitable for highly specific immunological methods requiring extremely low background levels, absence of F(c) mediated binding, lot-to-lot consistency, high titer and specificity.
ELISA Dilution: 1:40,000
Western Blot Dilution: 1:2,000 - 1:10,000

Restrictions: For Research Use only

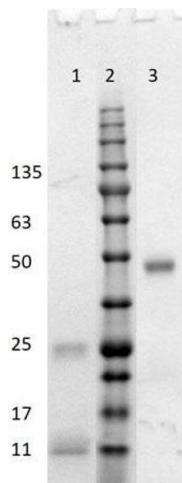
Handling

Format: Liquid

Handling

Concentration:	1.0 mg/mL
Buffer:	Buffer: 0.02 M Potassium Phosphate, 0.15 M Sodium Chloride, pH 7.2 Stabilizer: None Preservative: 0.01 % (w/v) Sodium Azide
Preservative:	Sodium azide
Precaution of Use:	This product contains Sodium azide: a POISONOUS AND HAZARDOUS SUBSTANCE which should be handled by trained staff only.
Handling Advice:	Avoid cycles of freezing and thawing.
Storage:	4 °C
Storage Comment:	Store vial at 4 °C prior to restoration. For extended storage aliquot antibody and freeze at -24 °C or below. Anti-Mouse IgG HRP secondary antibody is stable for several weeks at 4 °C as an undiluted liquid.
Expiry Date:	12 months

Images



SDS-PAGE

Image 1. SDS-PAGE results of Goat Fab Anti-Human IgG (H&L) Antibody. Lane 1: reduced Fab anti-Human. Lane 2: Opal Prestained Ladder - MB-210-0500. Lane 3: non-reduced Fab anti-Human. Load: 1.0ug. 4-20% Lonza SDS-PAGE; Coomassie Stained; BioRad ChemiDoc Imaged.