

Datasheet for ABIN965357

**Goat anti-Mouse IgG (Heavy & Light Chain) Antibody -  
Preadsorbed**[Go to Product page](#)**2** Images**1** Publication

## Overview

Quantity:	1 mg
Target:	IgG
Binding Specificity:	Heavy & Light Chain
Reactivity:	Mouse
Host:	Goat
Clonality:	Polyclonal
Application:	ELISA, Immunohistochemistry (IHC), Western Blotting (WB)

## Product Details

Immunogen:	Immunogen: Anti-Mouse IgG (H&L) antibody was produced by repeated immunization with mouse IgG whole molecule in goat. Immunogen Type: Native Protein
Isotype:	IgG
Fragment:	Fab fragment
Specificity:	Assay by immunoelectrophoresis resulted in a single precipitin arc against anti-Goat Serum.
Cross-Reactivity:	Mouse (Murine)
Characteristics:	Anti-Mouse IgG (H&L) antibody generated in goat detects specifically mouse IgG (H&L). This secondary antibody anti-Mouse is ideal for investigators who routinely perform titration assays, western-blot, immunoprecipitation and more generally immunoassays. Anti-Mouse IgG (H&L) antibody generated in goat detects specifically mouse IgG (H&L). This secondary antibody anti-Mouse is ideal for investigators who routinely perform titration assays,

## Product Details

western-blot, immunoprecipitation and more generally immunoassays.

Purification: Preadsorption: Solid phase absorption

## Target Details

Target: IgG

Abstract: [IgG Products](#)

Target Type: Antibody

Background: Synonyms: Goat Fab Anti-Mouse IgG Antibody  
Background: Fab Anti-Mouse IgG (H&L) Antibody generated in goat detects Mouse IgG. This product possesses the F(ab) region possessing the epitope-recognition site, both heavy and light chains of the antibody molecule are present. Secondary Antibodies are available in a variety of formats and conjugate types. When choosing a secondary antibody product, consideration must be given to species and immunoglobulin specificity, conjugate type, fragment and chain specificity, level of cross-reactivity, and host-species source and fragment composition.

## Application Details

Application Notes: Immunohistochemistry Dilution: 1:1,000 - 1:5,000  
Application Note: Anti-Mouse IgG (H&L) is suitable for highly specific immunological methods requiring extremely low background levels, lot-to-lot consistency, high titer and specificity. This secondary antibody anti-Mouse is ideal for investigators who routinely perform titration assays, western-blot, immunoprecipitation and more generally immunoassays.  
ELISA Dilution: 1:15,000  
Western Blot Dilution: 1:2,000 - 1:10,000

Restrictions: For Research Use only

## Handling

Format: Liquid

Concentration: 1.0 mg/mL

Buffer: Buffer: 0.02 M Potassium Phosphate, 0.15 M Sodium Chloride, pH 7.2  
Stabilizer: None  
Preservative: 0.01 % (w/v) Sodium Azide

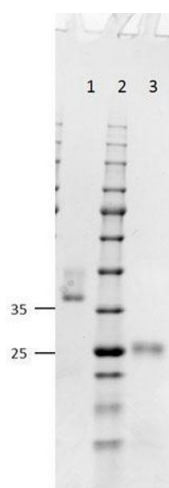
## Handling

Preservative:	Sodium azide
Precaution of Use:	This product contains Sodium azide: a POISONOUS AND HAZARDOUS SUBSTANCE which should be handled by trained staff only.
Handling Advice:	Avoid cycles of freezing and thawing. Centrifuge product if not completely clear after standing at room temperature. Dilute only prior to immediate use.
Storage:	4 °C
Storage Comment:	Store vial at 4 °C prior to restoration. For extended storage aliquot contents and freeze at -24 °C or below. This product is stable for several weeks at 4 °C as an undiluted liquid.
Expiry Date:	12 months

## Publications

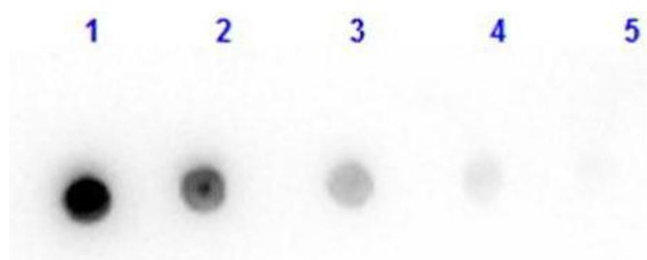
Product cited in:	Shaib, Staudt, Harb, Klose, Shaaban, Schirra, Mohrmann, Rettig, Becherer: "Paralogs of the Calcium-Dependent Activator Protein for Secretion Differentially Regulate Synaptic Transmission and Peptide Secretion in Sensory Neurons." in: <b>Frontiers in cellular neuroscience</b> , Vol. 12, pp. 304, (2018) ( <a href="#">PubMed</a> ).
-------------------	--

## Images



### SDS-PAGE

**Image 1.** SDS-PAGE results of Goat Fab Anti-Mouse IgG (H&L) Antibody. Lane 1: non-reduced Goat Fab Anti-Mouse. Lane 2: Opal Prestained Ladder - MB-210-0500. Lane 3: reduced Goat Fab Anti-Mouse. Load: 1.0ug. Coomassie stained and imaged.



#### Dot Blot

**Image 2.** Dot Blot results of Goat Fab Anti-Mouse IgG Antibody. Dots are Mouse IgG at (1) 100ng, (2) 33.3ng, (3) 11.1ng, (4) 3.70ng, (5) 1.23ng. Blocking: ABIN925618 for 30 min at RT. Primary Antibody: Goat Fab Anti-Mouse IgG at 1µg/mL for 1hr at RT. Secondary Antibody: Donkey Anti-Goat IgG HRP at 1:40,000 for 30min at RT. Imaged with BioRad ChemiDoc, Chemi filter.