

Datasheet for ABIN965361

Goat anti-Mouse IgG (Heavy & Light Chain) Antibody (Texas Red (TR)) - Preadsorbed



[Go to Product page](#)

1 Image

Overview

Quantity:	1 mg
Target:	IgG
Binding Specificity:	Heavy & Light Chain
Reactivity:	Mouse
Host:	Goat
Clonality:	Polyclonal
Conjugate:	Texas Red (TR)
Application:	Flow Cytometry (FACS), FLISA, Fluorescence Microscopy (FM)

Product Details

Immunogen:	Immunogen: Mouse IgG whole molecule
Isotype:	IgG
Fragment:	Fab fragment
Specificity:	Assay by immunoelectrophoresis resulted in a single precipitin arc against anti-Goat Serum.
Characteristics:	This product is designed for immunofluorescence microscopy, fluorescence based plate assays (FLISA) and fluorescent western blotting. This product is also suitable for multiplex analysis, including multicolor imaging, utilizing various commercial platforms.
Purification:	Preadsorption: Solid phase absorption
Labeling Ratio:	1.36

Target Details

Target:	IgG
Abstract:	IgG Products
Target Type:	Antibody
Background:	<p>Synonyms: Goat Fab Anti-Mouse IgG Texas Red™ Conjugated Antibody, Goat Fab Fragment Anti-Mouse IgG Antibody Texas Red™ Conjugation</p> <p>Background: Fab Anti-Mouse IgG (H&L) Texas Red Antibody generated in goat detects Mouse IgG. This product possesses the F(ab) region possessing the epitope-recognition site, both heavy and light chains of the antibody molecule are present. Secondary Antibodies are available in a variety of formats and conjugate types. When choosing a secondary antibody product, consideration must be given to species and immunoglobulin specificity, conjugate type, fragment and chain specificity, level of cross-reactivity, and host-species source and fragment composition.</p>

Application Details

Application Notes:	<p>Application Note: Suitable for immunomicroscopy and flow cytometry or FACS analysis as well as other antibody based fluorescent assays requiring extremely low background levels, absence of F(c) mediated binding, lot-to-lot consistency, high titer and specificity. This product is also suitable for multiplex analysis, including multicolor imaging, utilizing various commercial platforms.</p> <p>FLISA Dilution: 1:10,000 - 1:50,000</p> <p>Flow Cytometry Dilution: 1:500 - 1:2,500</p> <p>IF Microscopy Dilution: 1:1,000 - 1:5,000</p>
--------------------	--

Comment:	Texas Red™ is a registered trademark of Molecular Probes Inc.
----------	---

Restrictions:	For Research Use only
---------------	-----------------------

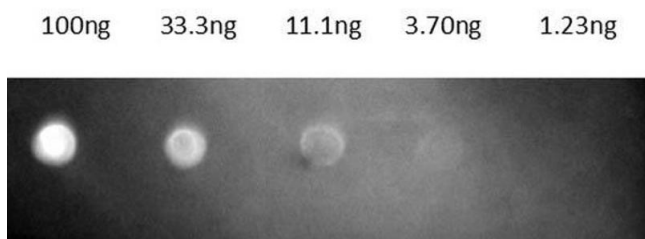
Handling

Format:	Lyophilized
Reconstitution:	Reconstitution Volume: 1.0 mL Reconstitution Buffer: Restore with deionized water (or equivalent)
Concentration:	1.0 mg/mL
Buffer:	Buffer: 0.02 M Potassium Phosphate, 0.15 M Sodium Chloride, pH 7.2 Stabilizer: 10 mg/mL Bovine Serum Albumin (BSA) - Immunoglobulin and Protease free

Handling

	Preservative: 0.01 % (w/v) Sodium Azide
Preservative:	Sodium azide
Precaution of Use:	This product contains Sodium azide: a POISONOUS AND HAZARDOUS SUBSTANCE which should be handled by trained staff only.
Handling Advice:	Avoid cycles of freezing and thawing. Centrifuge product if not completely clear after standing at room temperature. Dilute only prior to immediate use. Product is photosensitive and should be protected from light.
Storage:	RT,4 °C,-20 °C
Storage Comment:	Store vial at 4 °C prior to restoration. For extended storage aliquot contents and freeze at -24 °C or below. This product is stable for several weeks at 4 °C as an undiluted liquid.
Expiry Date:	12 months

Images



Dot Blot

Image 1. Dot Blot of Fab Anti-MOUSE IgG (GOAT) Texas Conjugated Antibody. Lane 1: 100ng. Lane 2: 33.3ng. Lane 3: 11.1ng. Lane 4: 3.7ng. Lane 5: 1.23ng. Secondary Antibody: Goat anti-Mouse IgG Texas Red. Blocking Buffer: BlockOut for 30 min at RT.